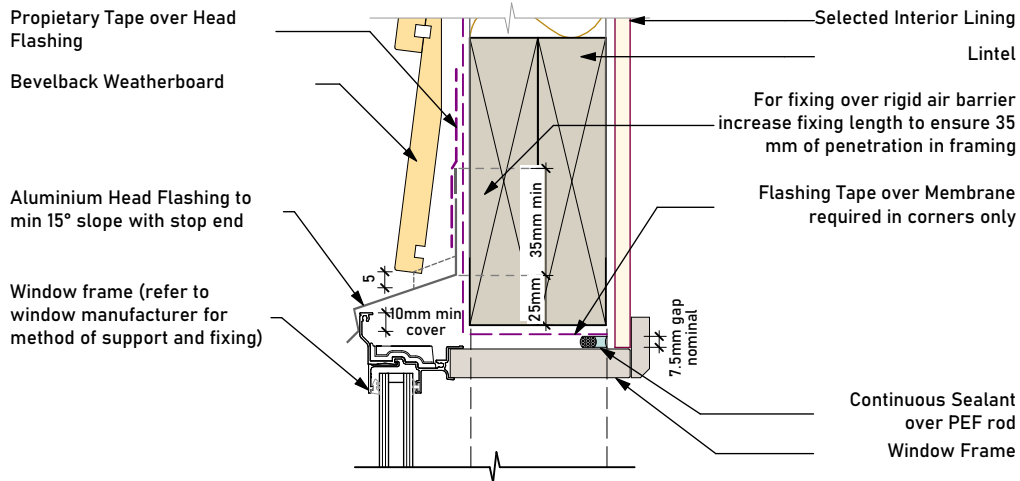


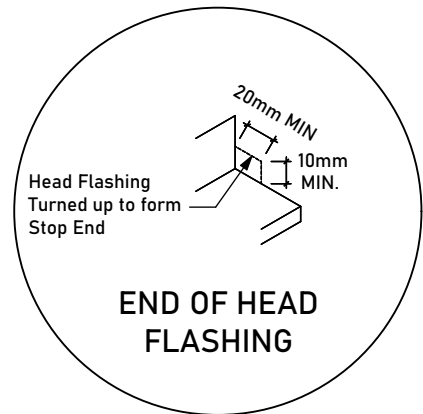
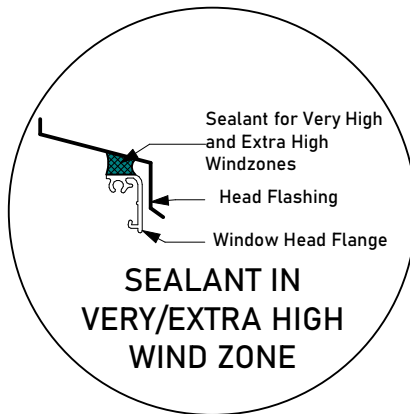
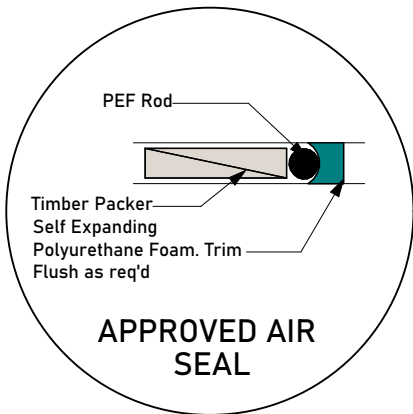
OTC Bevelback

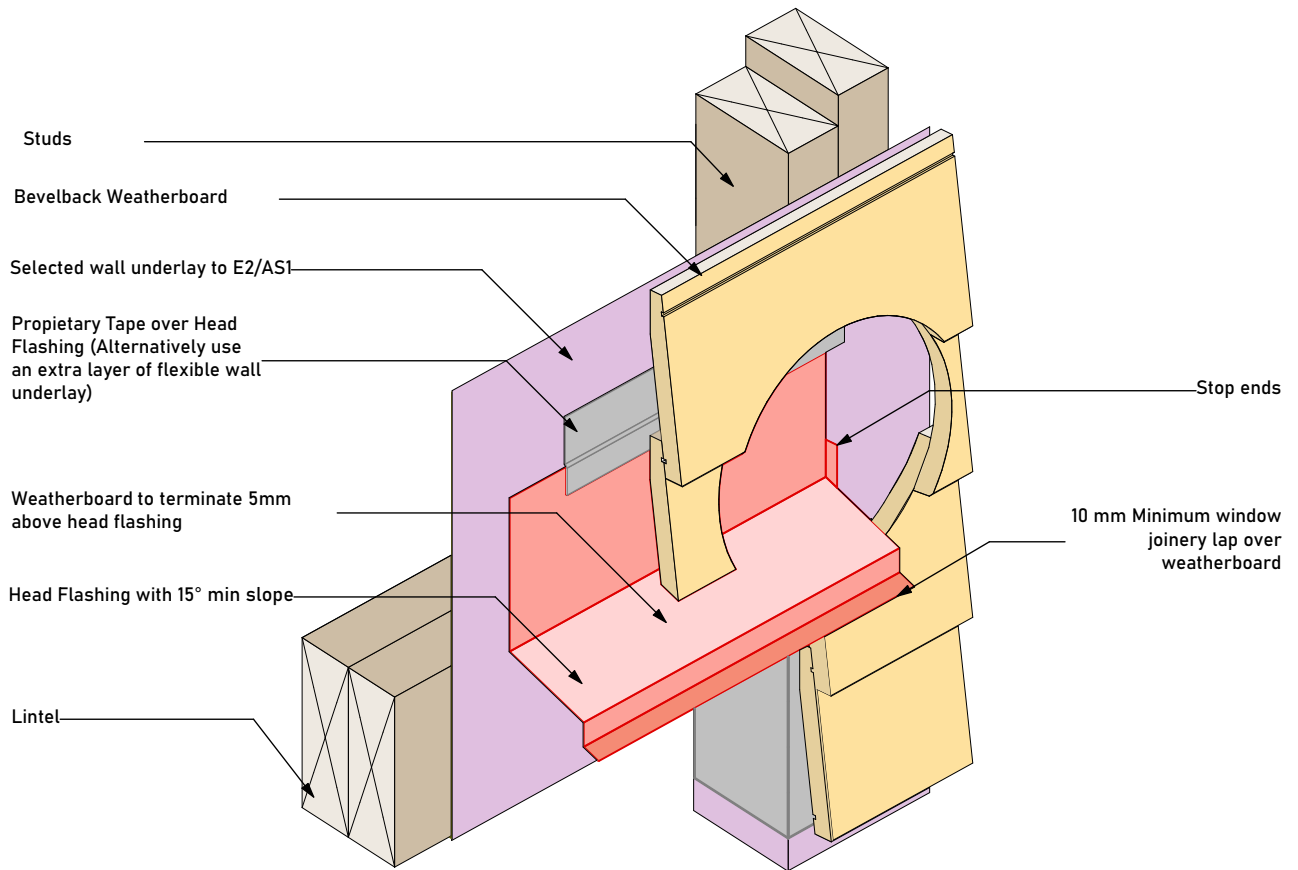
Layout ID	Layout Name	Scale
1	Index	1:1
2	Bevelback Direct Fix - Window Head	1:5
3	Bevelback Direct Fix - 3D window Head	1:5
4	Bevelback Direct Fix - Window Jamb	1:5
5	Bevelback Direct Fix - Window Sill	1:5
6	Bevelback Direct Fix - 3D Window Sill	1:10
7	Bevelback Direct Fix - Foundation Concrete	1:5
8	Bevelback Direct Fix - Foundation Timber	1:5
9	Bevelback Direct Fix - Door Sill	1:5
10	Bevelback Direct Fix - Door Jamb	1:5
11	Bevelback Direct Fix - Door Head	1:5
12	Bevelback Direct Fix - Soffit	1:5
13	Bevelback Direct Fix - External Corner	1:5
14	Bevelback Direct Fix - Internal Corner	1:5
15	Bevelback Direct Fix - Meterbox Head	1:5
16	Bevelback Direct Fix - Meterbox Sill	1:5
17	Bevelback Direct Fix - Pipe Penetration	1:10, 1:5
18	Bevelback Direct Fix - Fascia Eaves - No Soffit	1:5
19	Bevelback Direct Fix - Apron 1 Metal Tiles	1:10
20	Bevelback Direct Fix - Apron 2 Metal Tiles	1:10
21	Bevelback Direct Fix - Apron Long Run	1:10
22	Bevelback Direct Fix - 3D Gutter to Wall Long Run	1:20
23	Bevelback Direct Fix - 3D Gutter to Wall Metal Tiles	1:20
24	Bevelback Direct Fix - 3D Apron (External Corner) - Long Run	1:10
25	Bevelback Direct Fix - 3D apron (External Corner) Metal Tiles	1:10
26	Bevelback Direct Fix - 3D Apron (Internal Corner) Long Run	1:10
27	Bevelback Direct Fix - 3D Apron (Internal Corner) Metal Tiles	1:10
28	Bevelback Direct fix - Vertical to Horizontal Junction	1:5

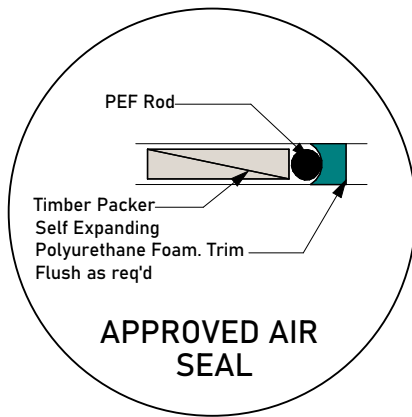
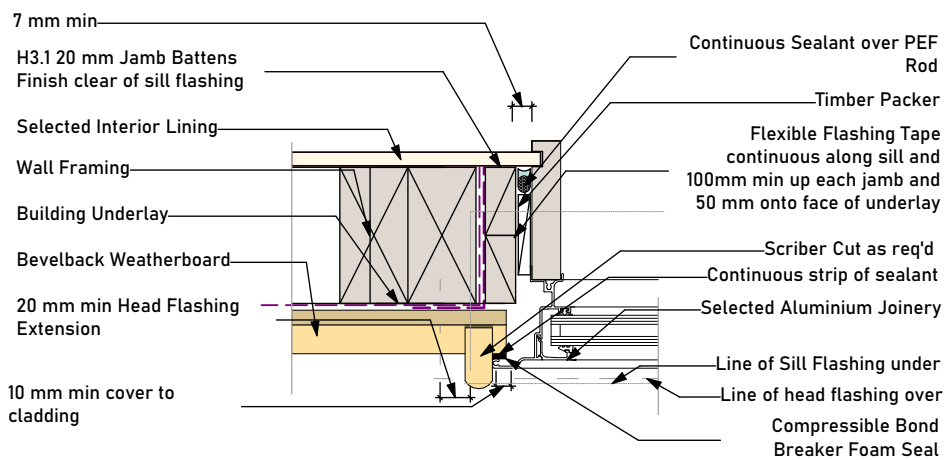


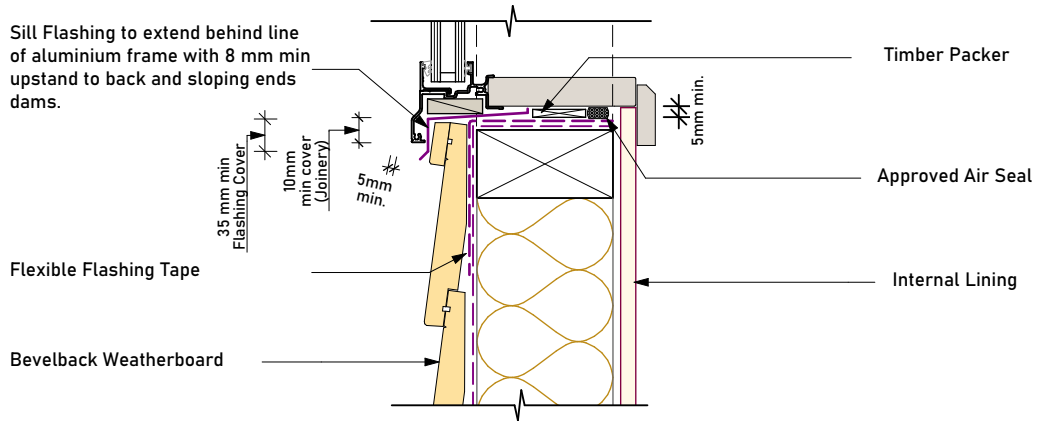
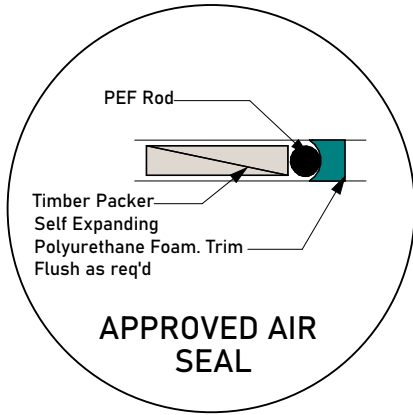
NOTES:

1. Flashing materials must be selected based on exposure zone, refer to NZS:3604 and table 20 NZBC E2/AS1.
2. Flashing tape must be compatible with the selected underlay.
3. Flexible underlay to comply with acceptable solution E2/AS1.
4. When Rigid air barriers are used flashing tape to be applied to the entire window opening.



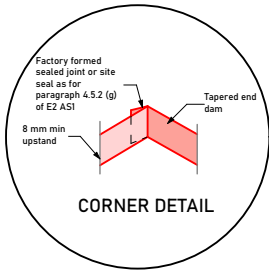






NOTES:

1. Flashing materials must be selected based on exposure zone, refer to NZS:3604 and table 20 NZBC E2/AS1.
2. Flashing tape must be compatible with the selected underlay.
3. Flexible underlay to comply with acceptable solution E2/AS1.
4. When Rigid air barriers are used flashing tape to be applied to the entire window opening.



100 mm min turn up to flexible flashing

See corner detail above

8 mm min upstands to back of sill flashing

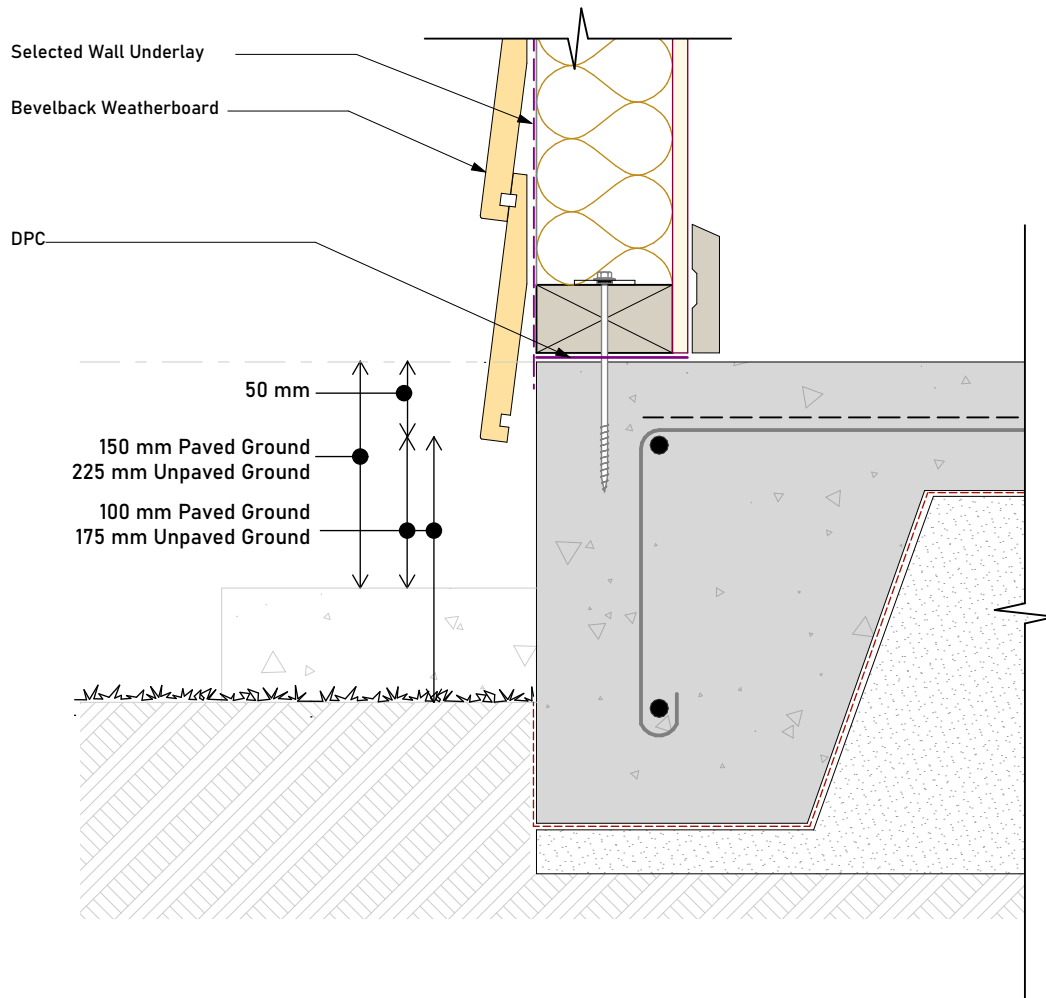
Frame block supplied by joinery manufacturer to support joinery unit
Flexible tape fill width of opening over underlay

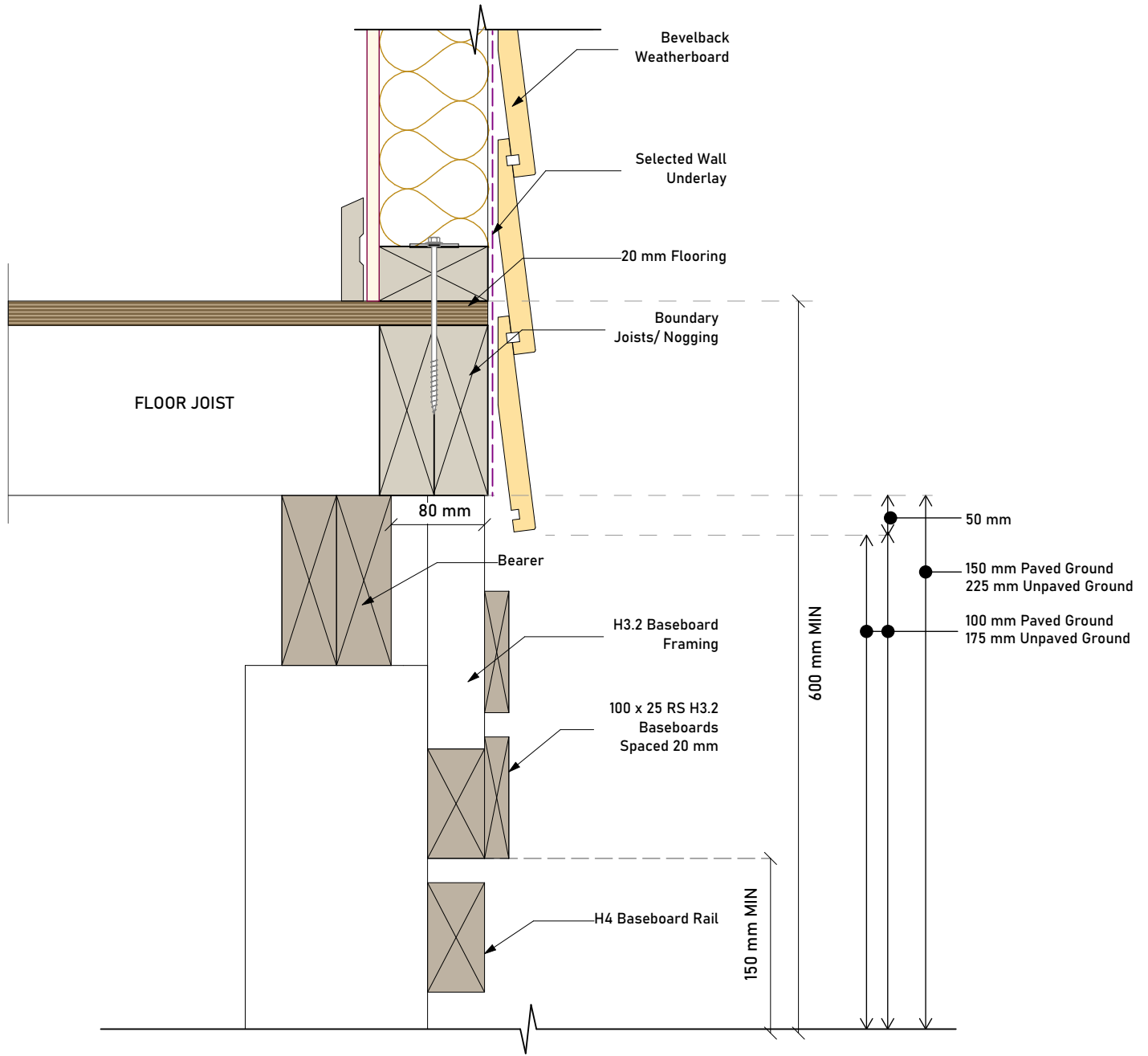
50 mm min lap

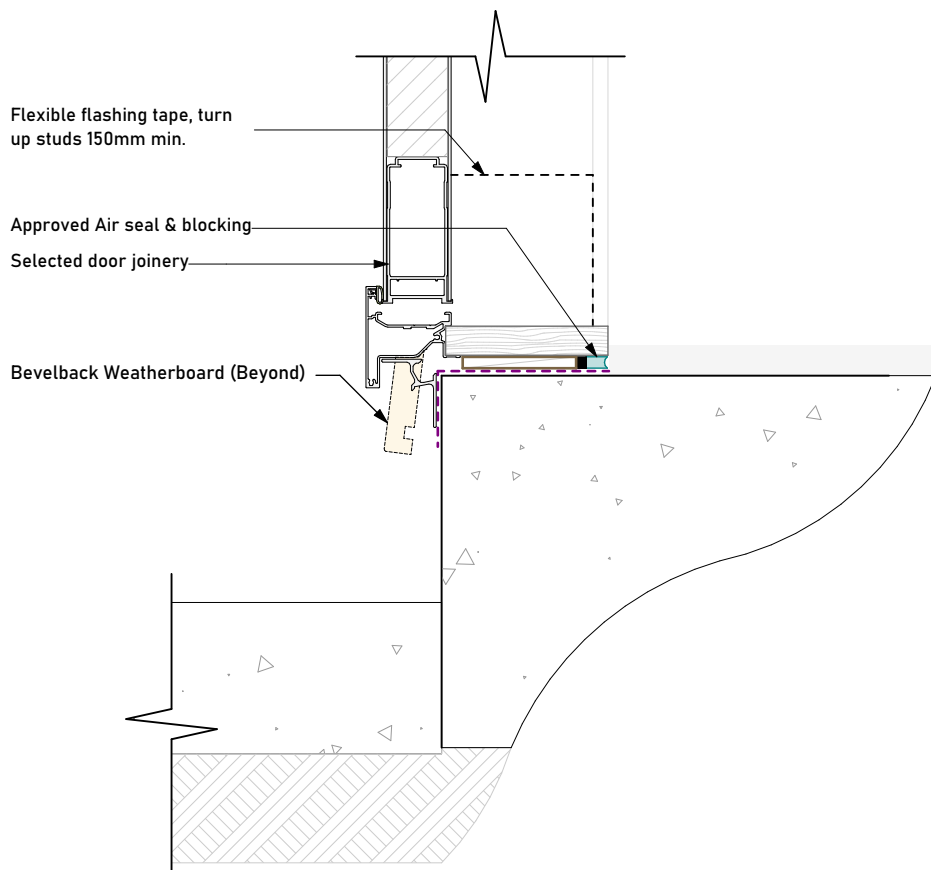
Wall underlay turned into opening over framing

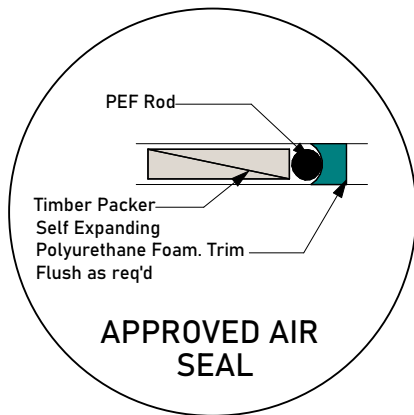
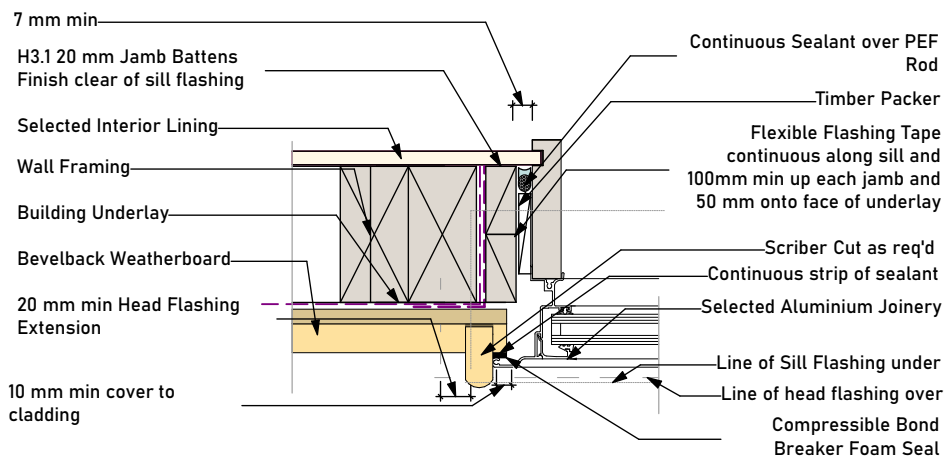
Sill packer

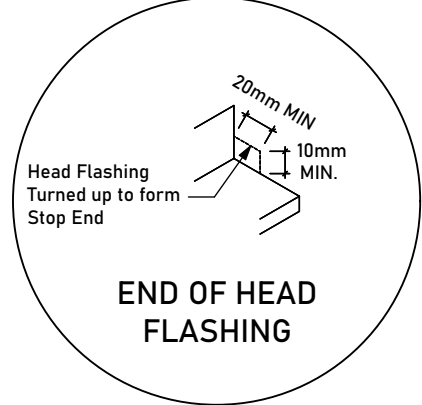
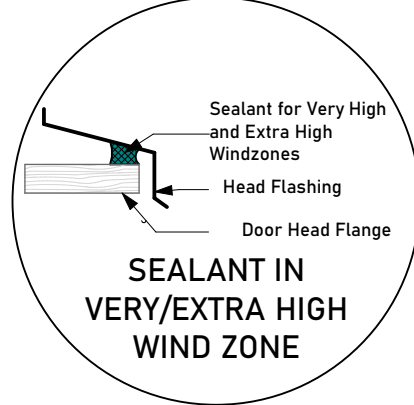
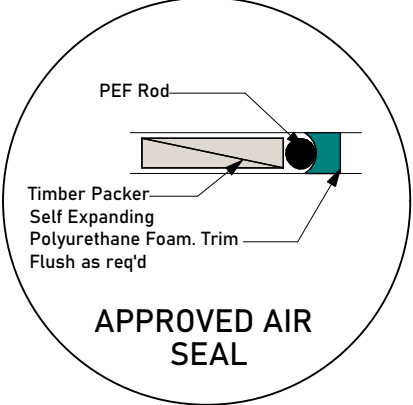
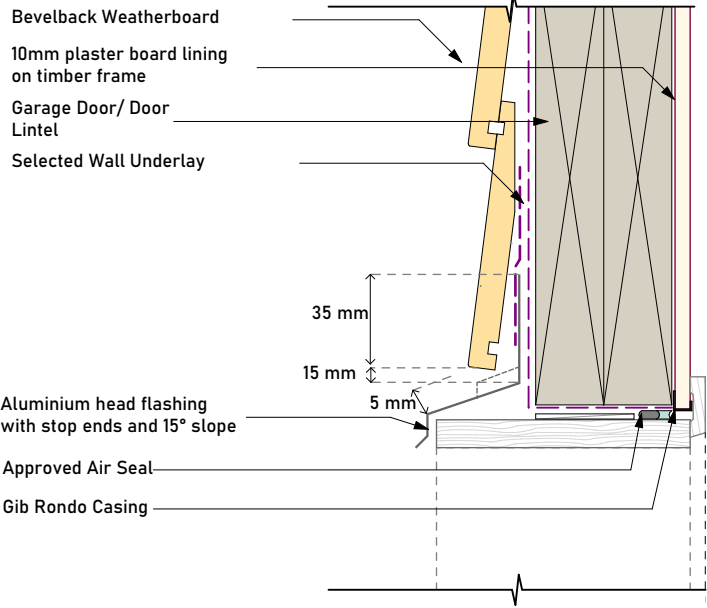
Flat sill tray flashing. Refer paragraph 9.1.10.5 (A) minimum of full width of window opening as shown in the window details. Ensure flat sill tray does not slope backwards.
Sill Flashing to extend back past the condensation channel of the window

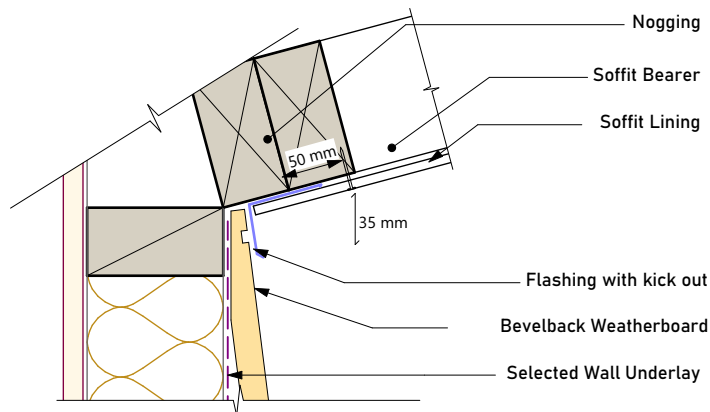
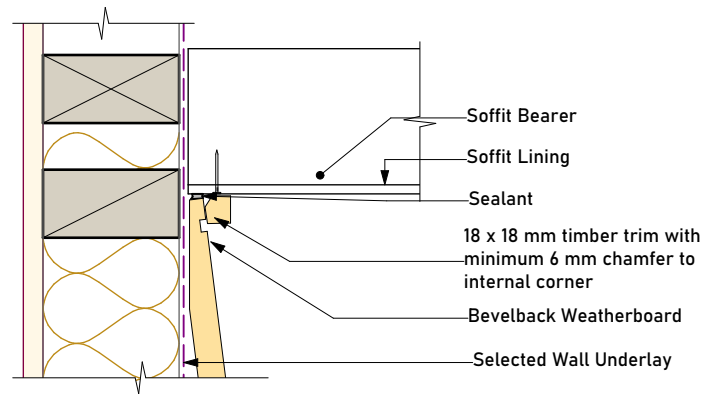




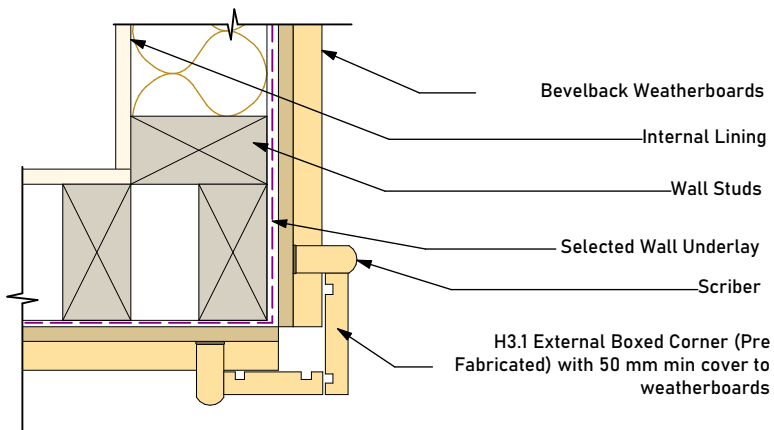
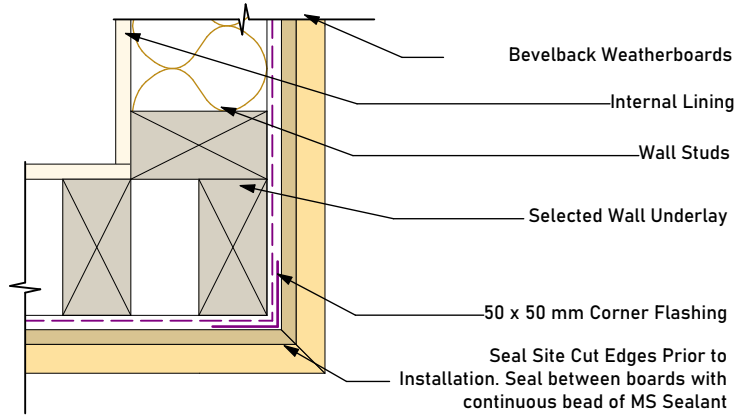


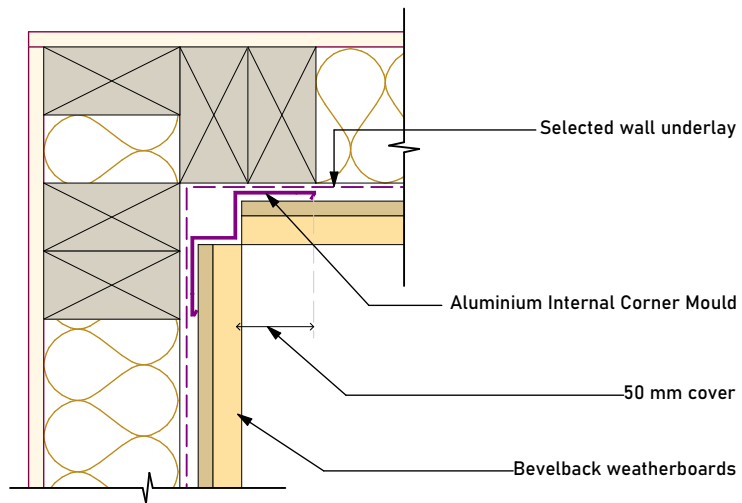
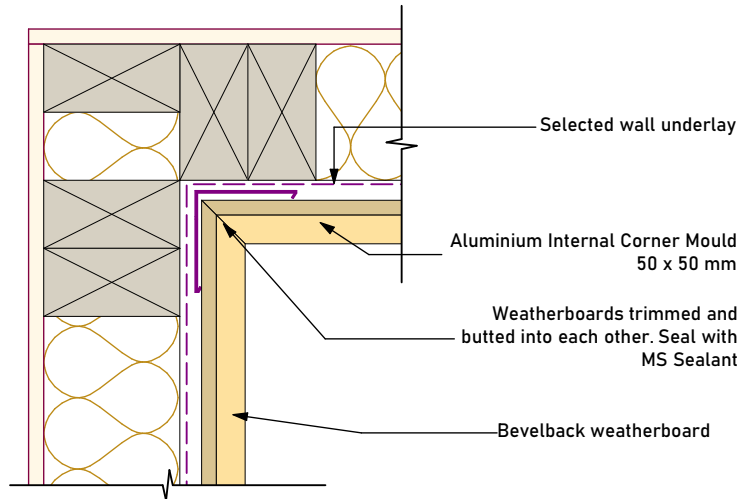


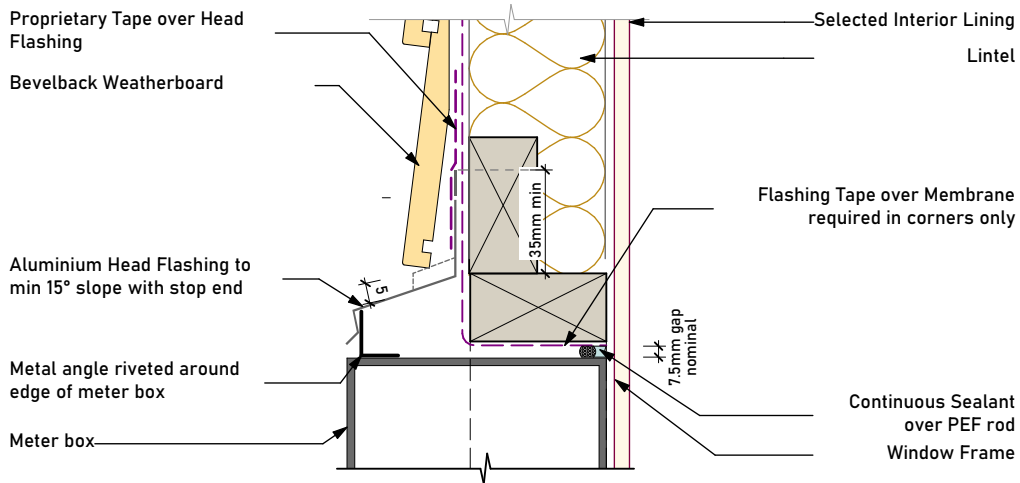




Note: All Site Cut Edges to be Sealed

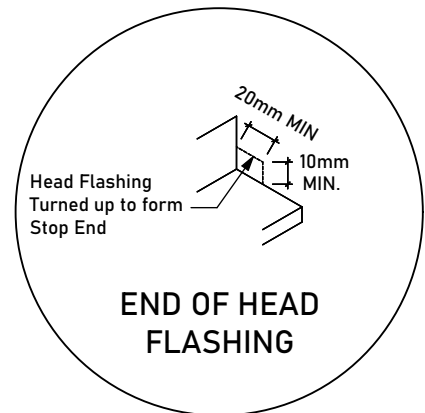
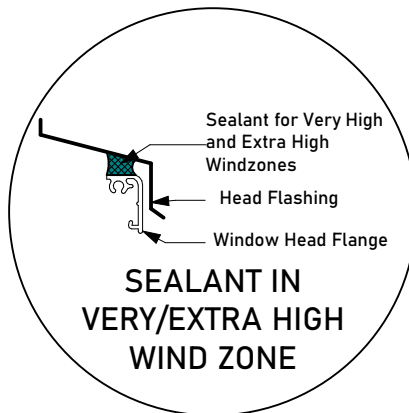
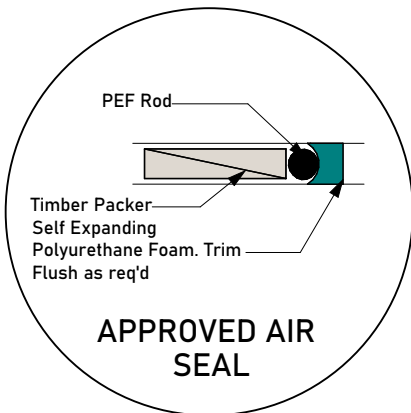


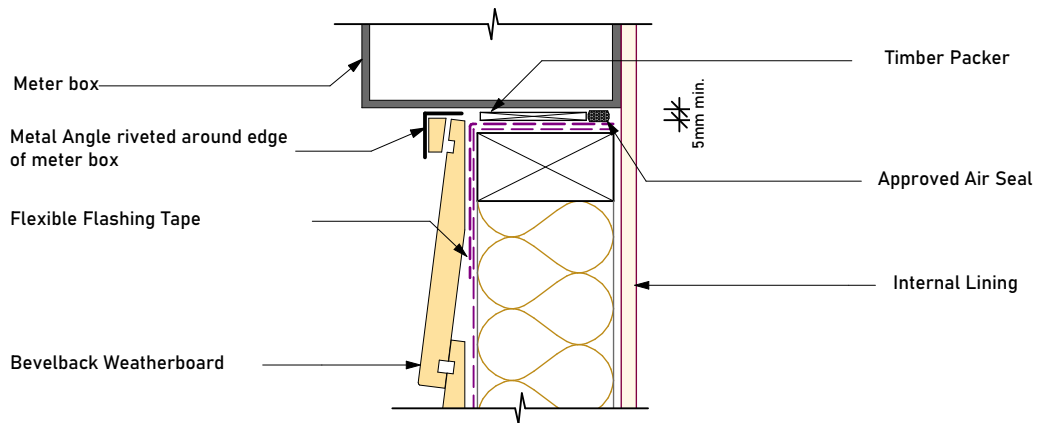
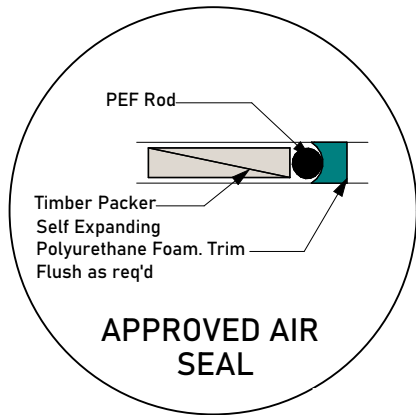




NOTES:

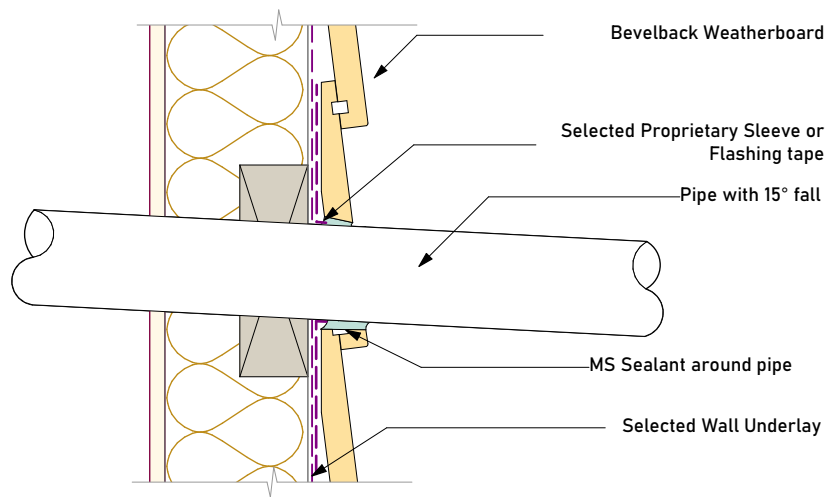
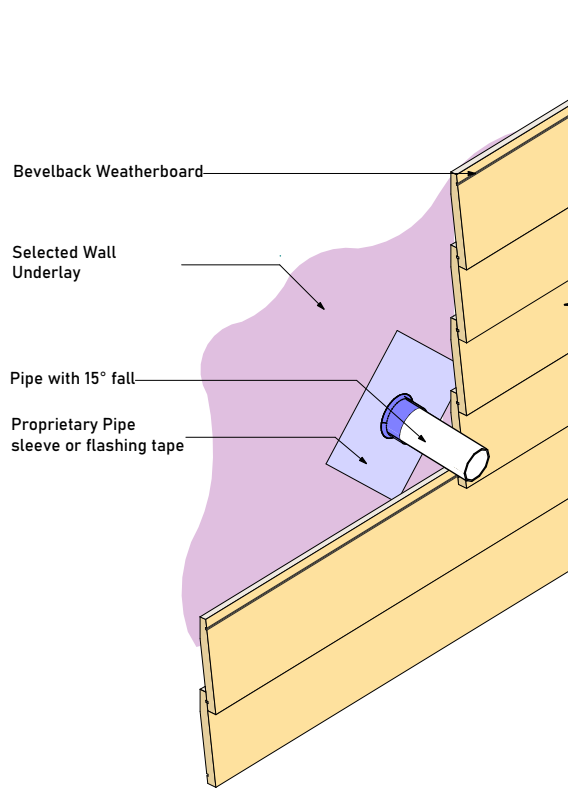
1. Flashing materials must be selected based on exposure zone, refer to NZS:3604 and table 20 NZBC E2/AS1.
2. Flashing tape must be compatible with the selected underlay.
3. Flexible underlay to comply with acceptable solution E2/AS1.
4. When Rigid air barriers are used flashing tape to be applied to the entire window opening.





NOTES:

1. Flashing materials must be selected based on exposure zone, refer to NZS:3604 and table 20 NZBC E2/AS1.
2. Flashing tape must be compatible with the selected underlay.
3. Flexible underlay to comply with acceptable solution E2/AS1.
4. When Rigid air barriers are used flashing tape to be applied to the entire window opening.



Selected Long Run metal roofing

Selected self-supporting roofing underlay over battens and fascia at eaves

Selected gutter

Dressed Timber Fascia

Top Plate

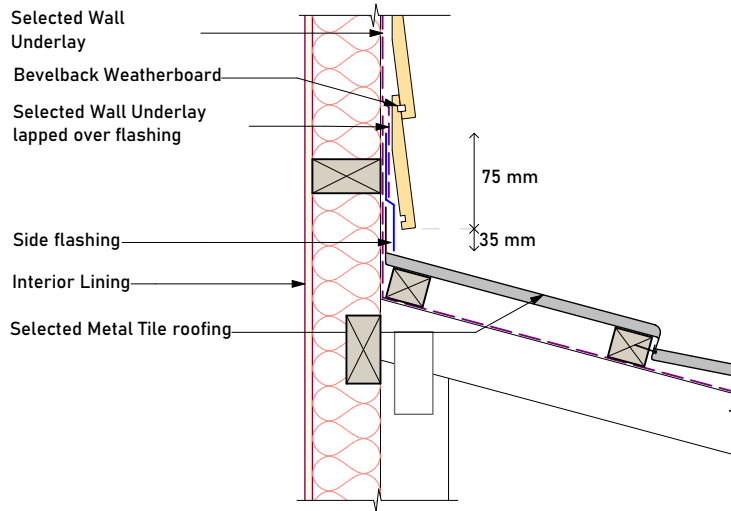
50 mm

Bevelback Weatherboard

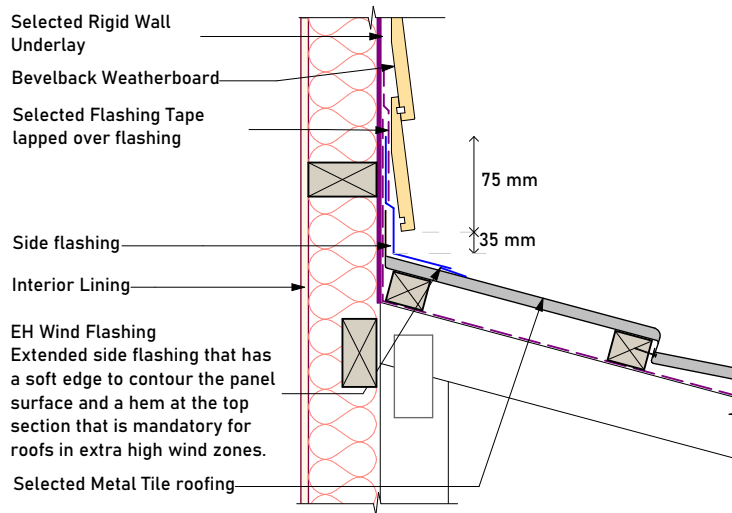
Selected Flexible Wall Underlay

Selected internal wall lining

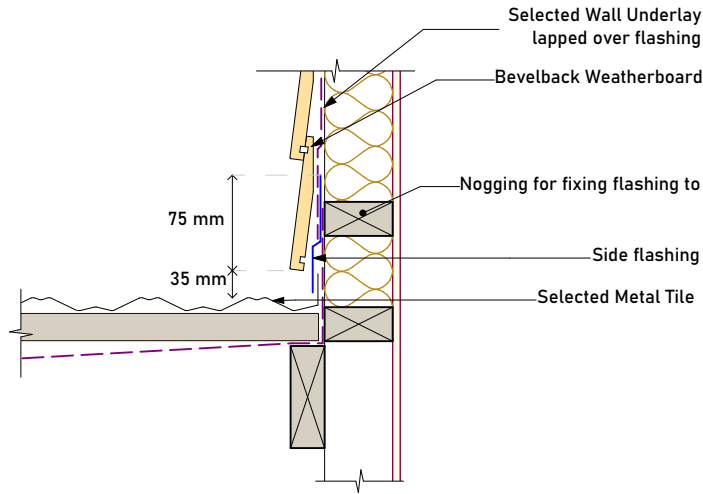
Wind Zones - Low to Very High



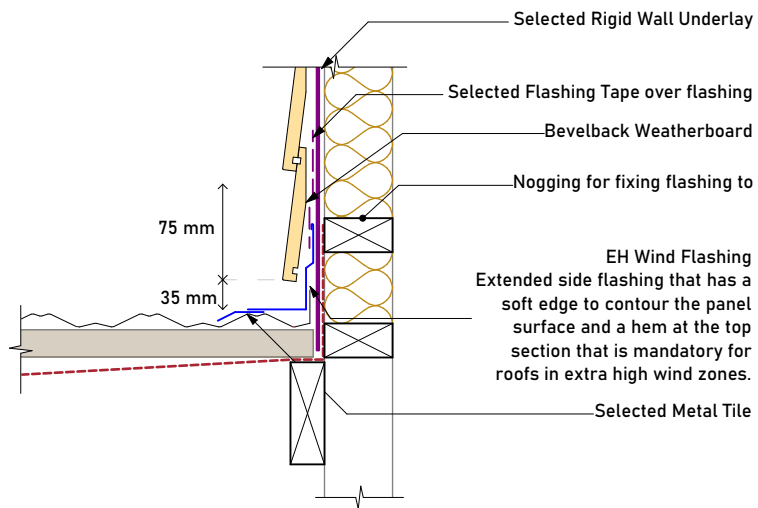
Wind Zones - Extra High

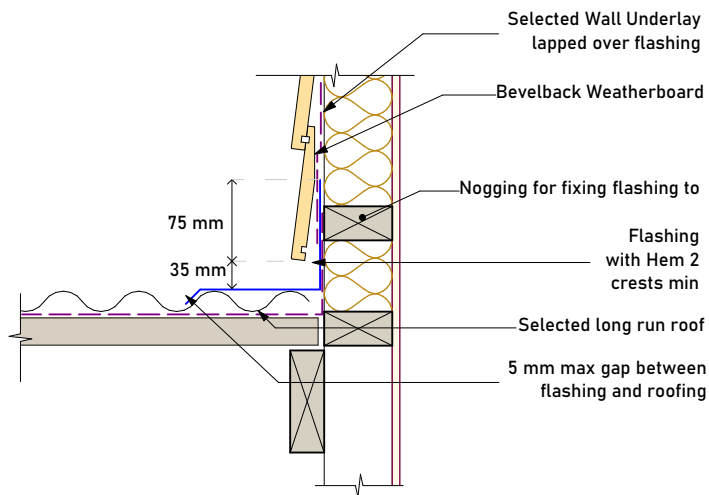
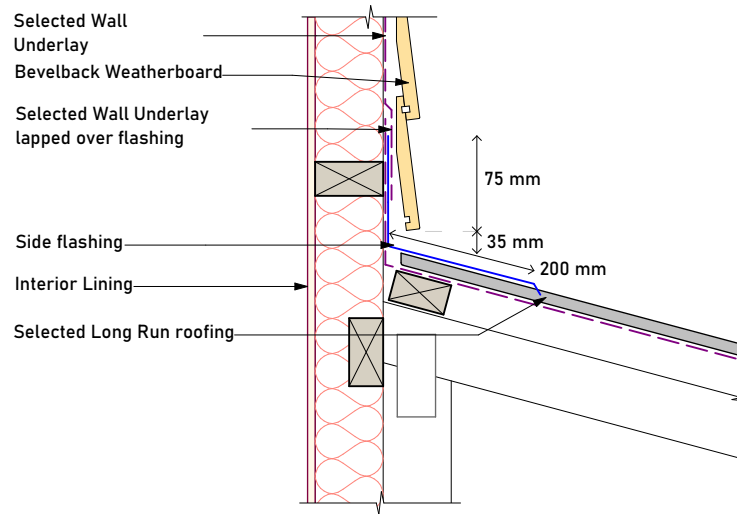


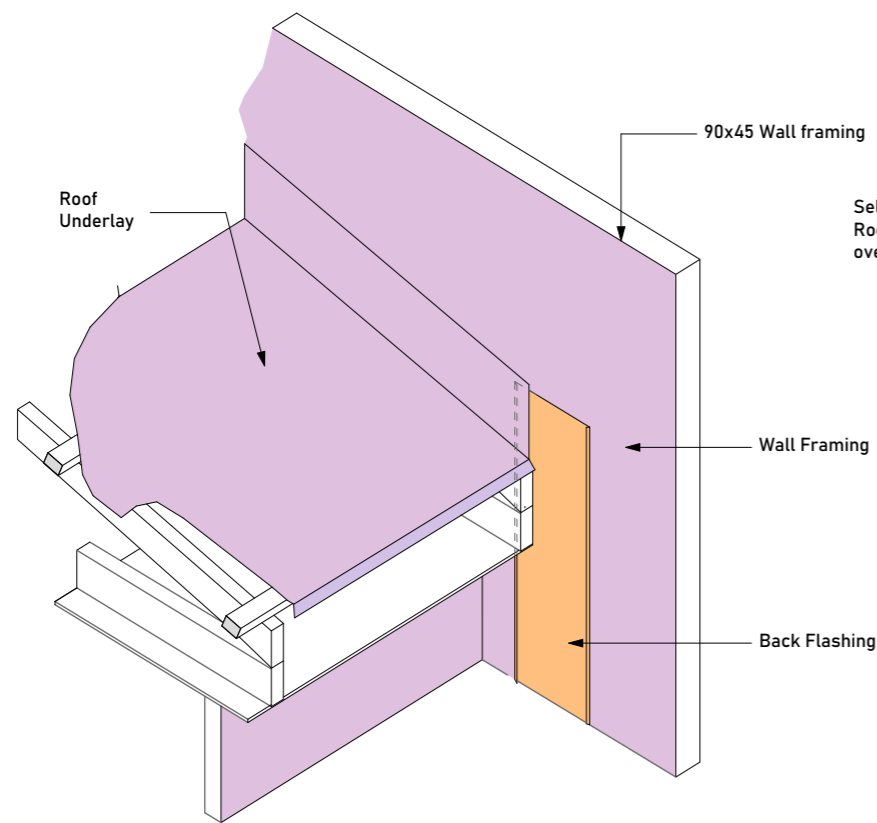
Wind Zones - Low to Very High



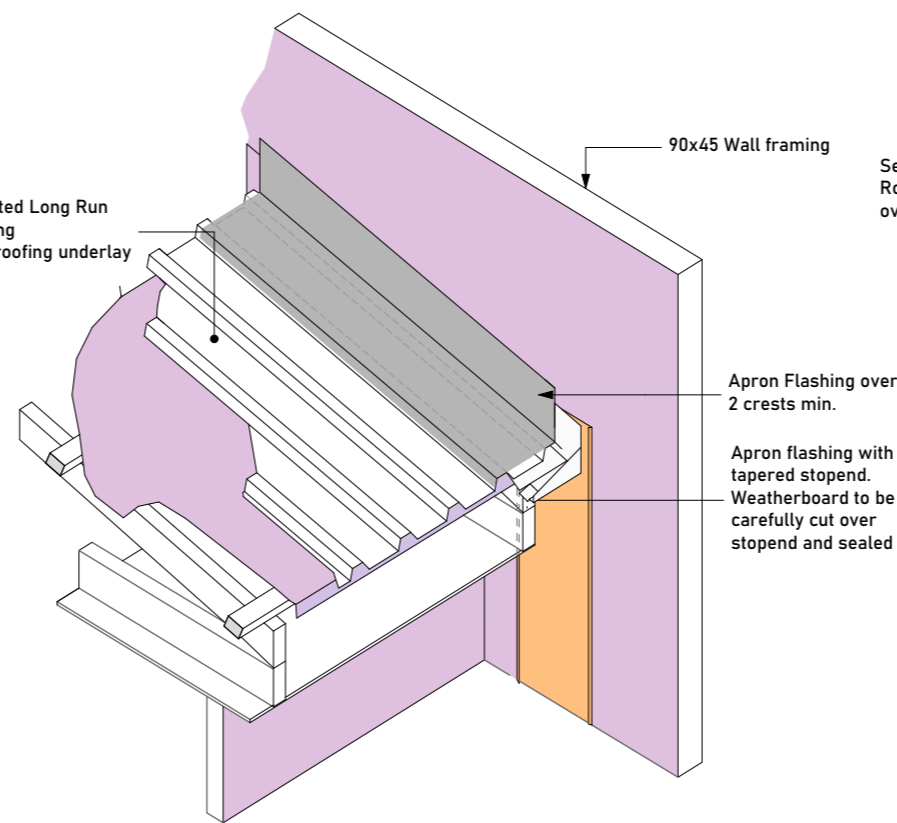
Wind Zones - Extra High



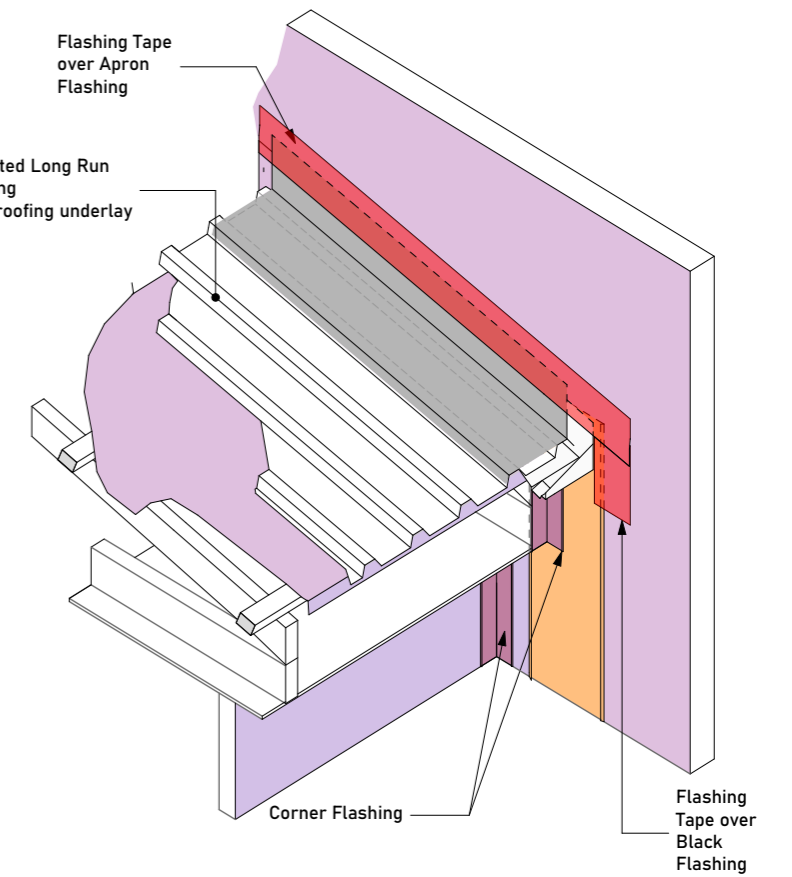




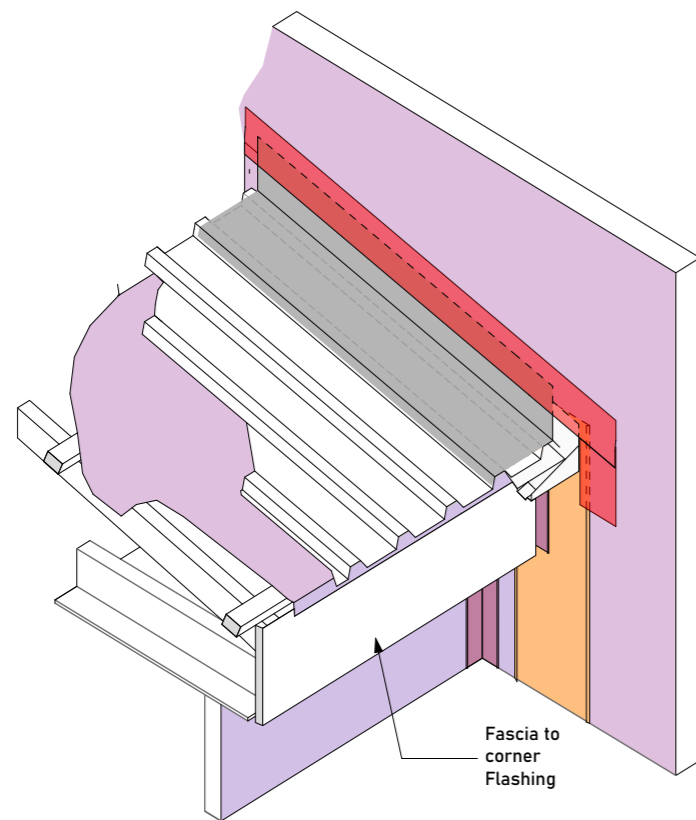
Step 1 - Back Flashing, Wall and Roof Underlay



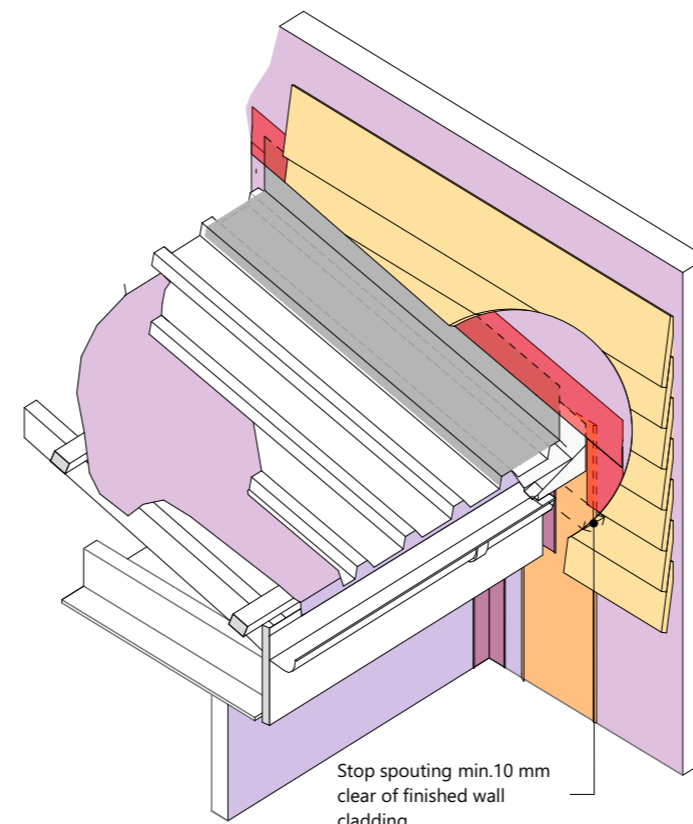
Step 2 - Apron Flashing and Kick out



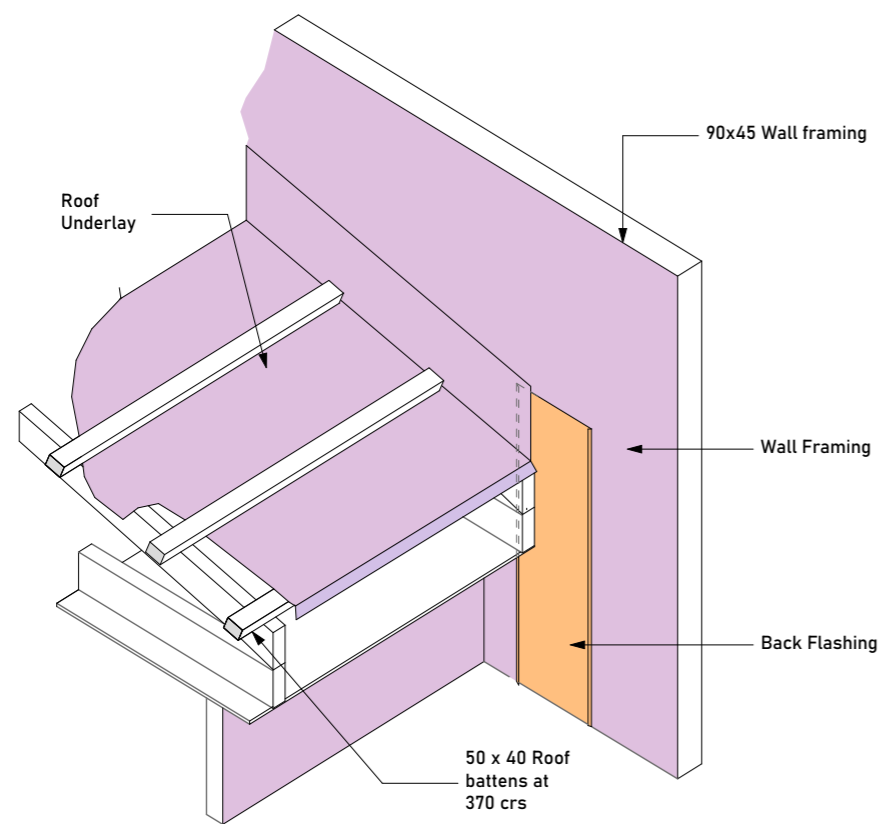
Step 3 - Overlap wall underlay from above and flashing tape



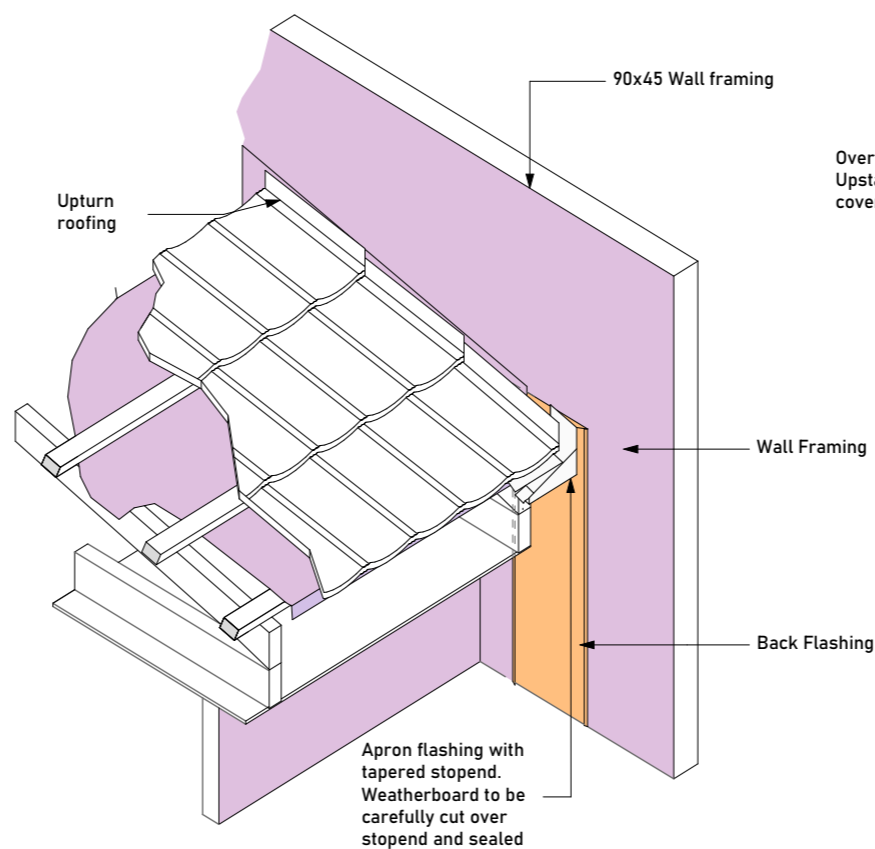
Step 4 - Fascia



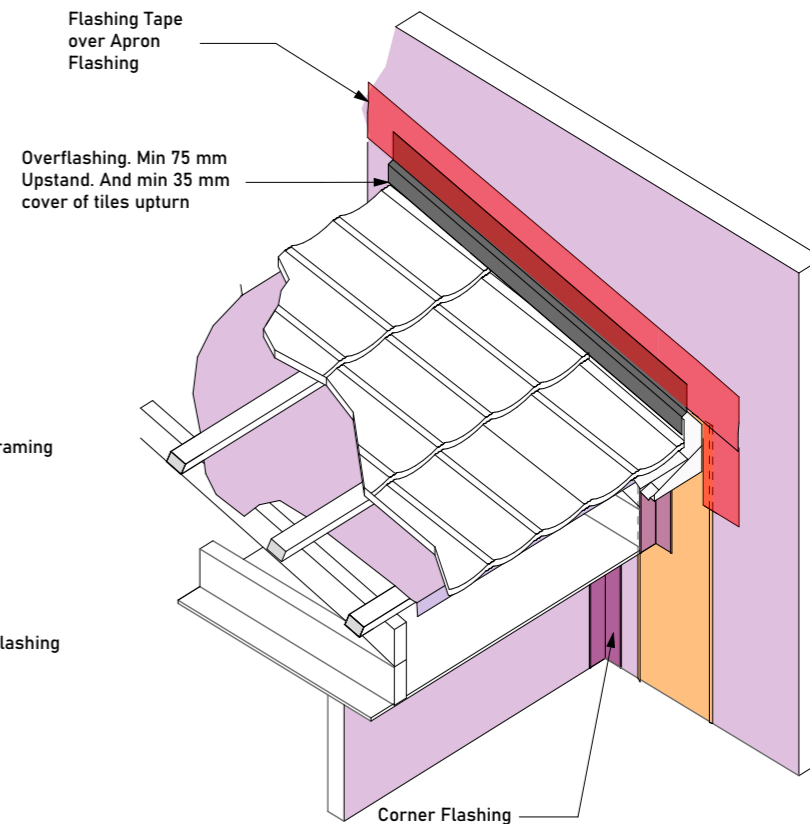
Step 5 - Cladding and Gutter



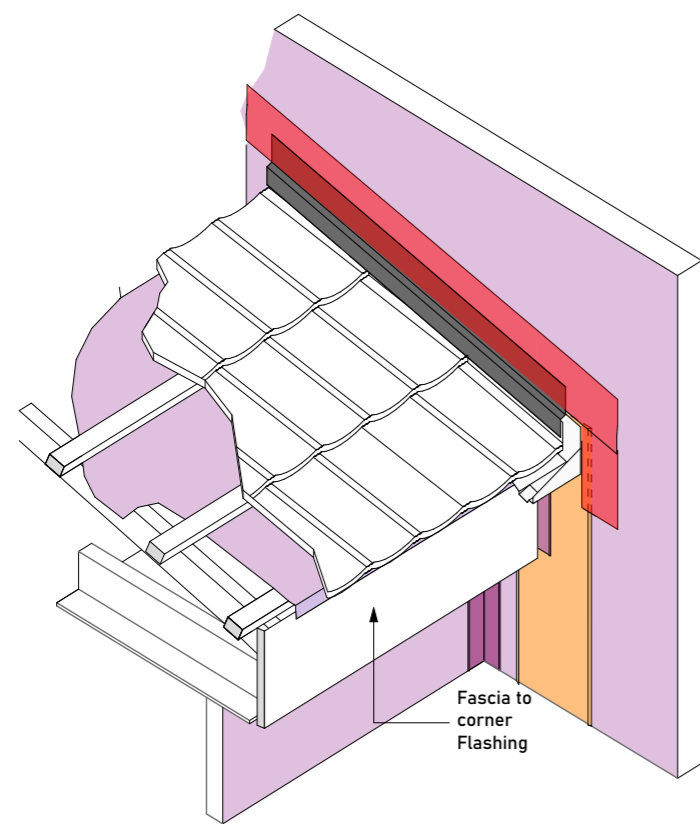
Step 1 - Back Flashing, Wall and Roof Underlay



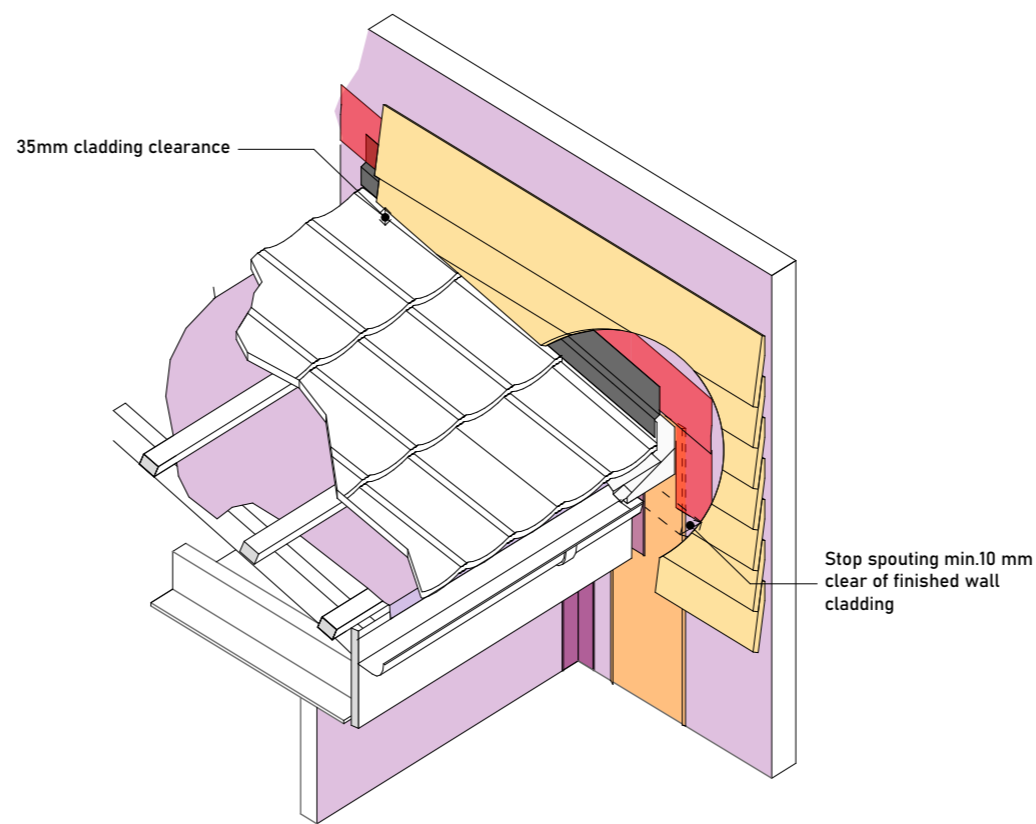
Step 2 - Apron Flashing and Kick out



Step 3 - Overlap wall underlay from above and flashing tape

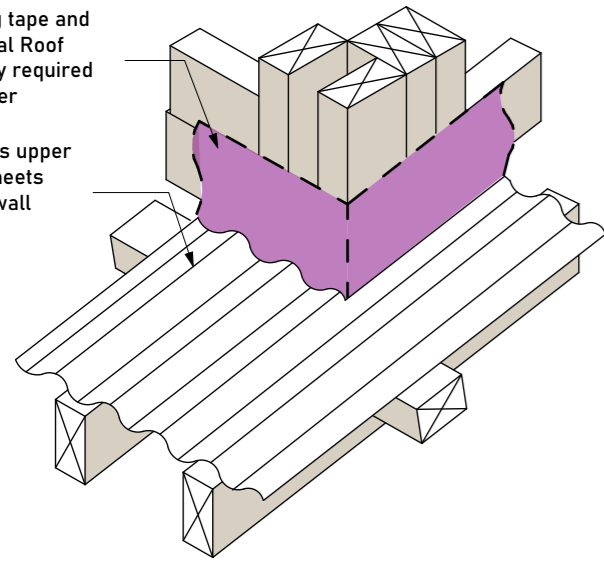


Step 4 - Fascia

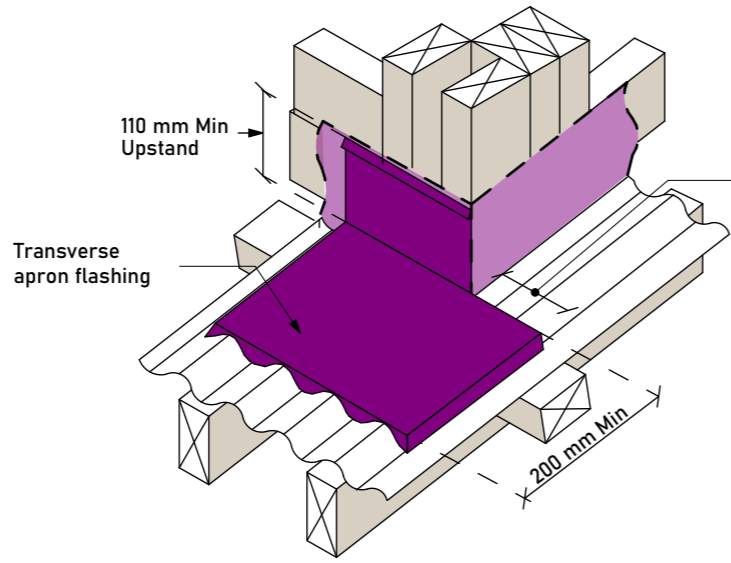


Step 5 - Cladding and Gutter

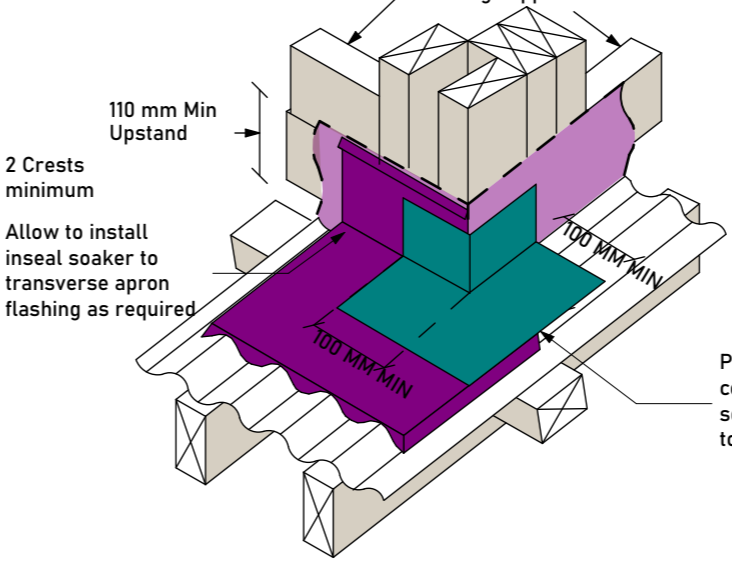
Flashing tape and additional Roof Underlay required for corner
 Stop ends upper end of sheets abutting wall framing



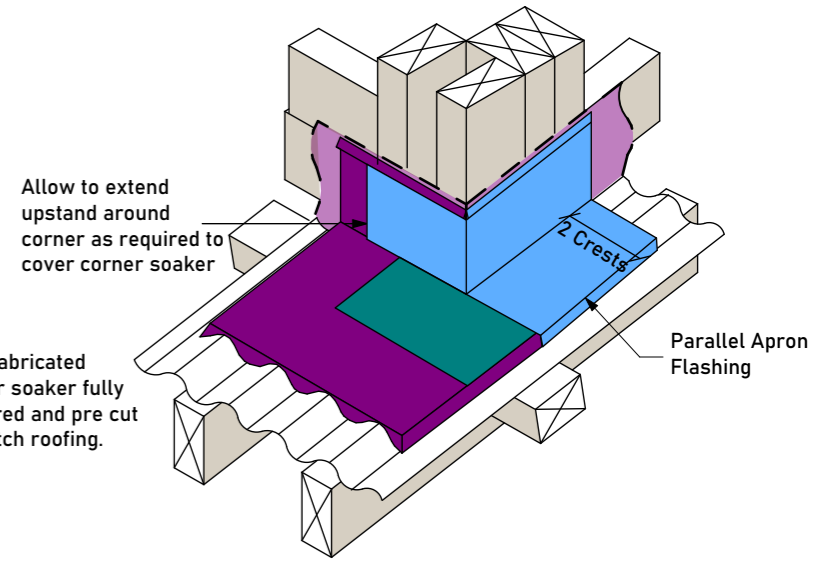
Step 1 - Roofing and Wall Underlay



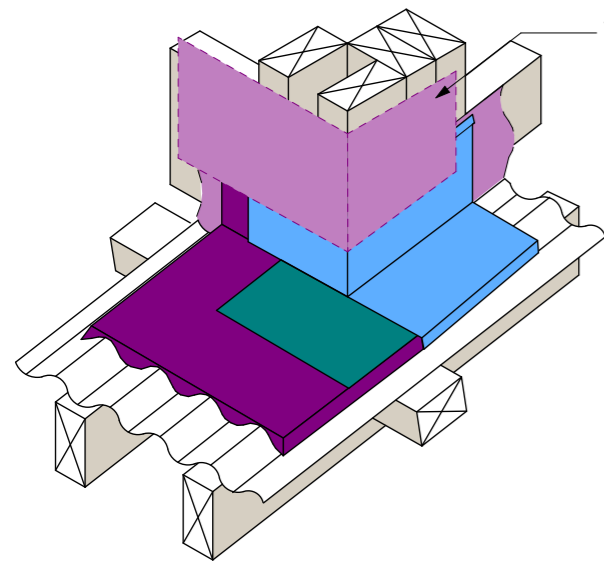
Step 2 - Transverse flashing



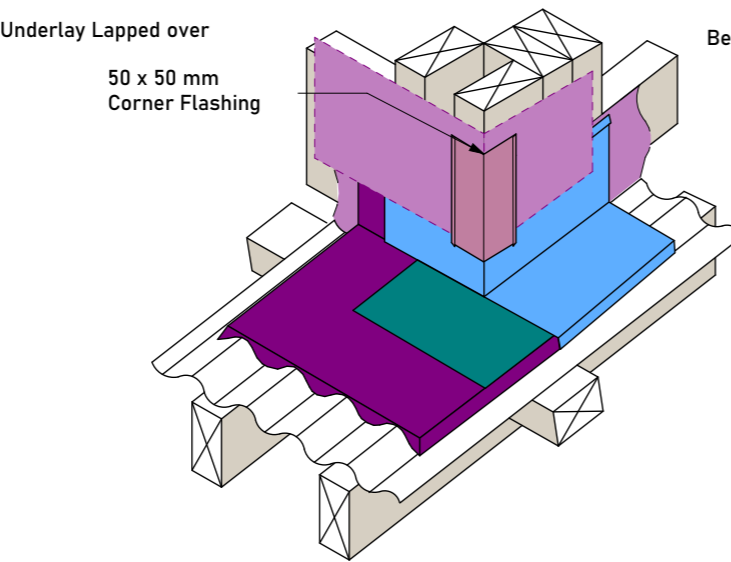
Step 3 - Corner Soaker



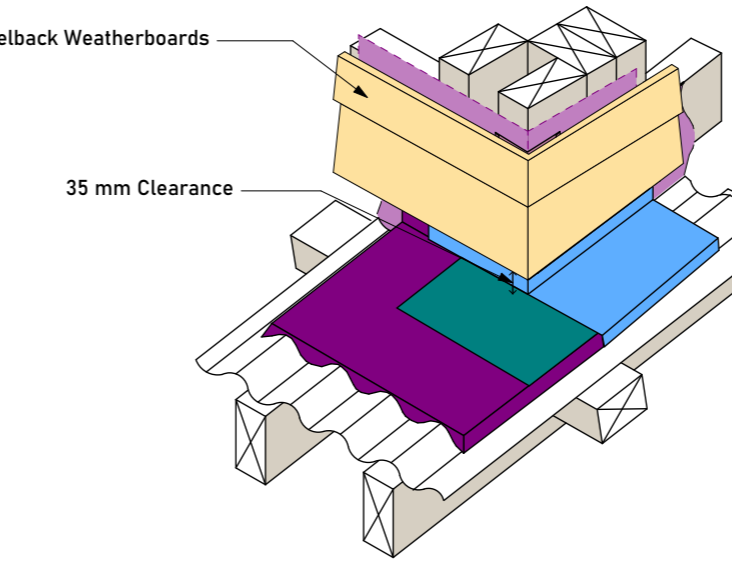
Step 4 - Parallel Apron Flashing



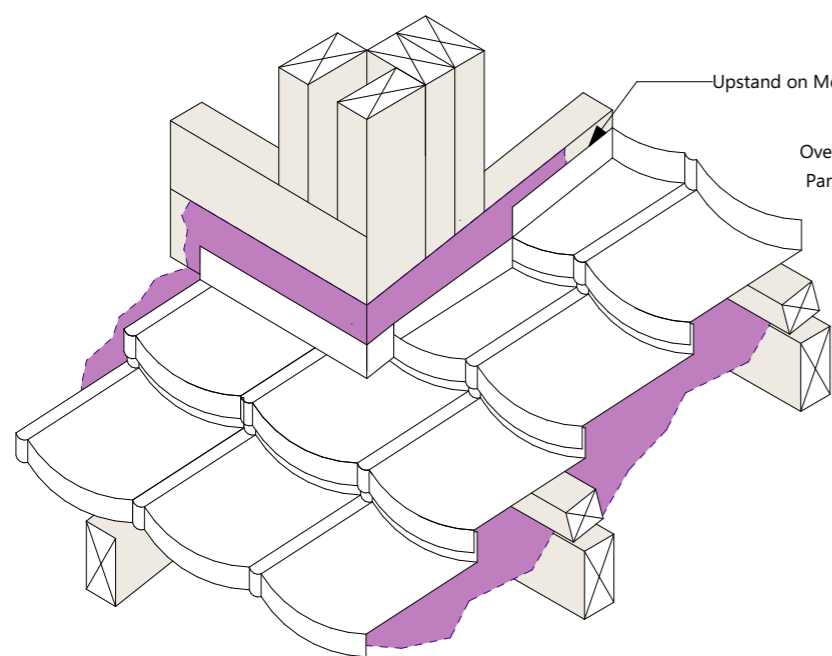
Step 5 - Wall Underlay



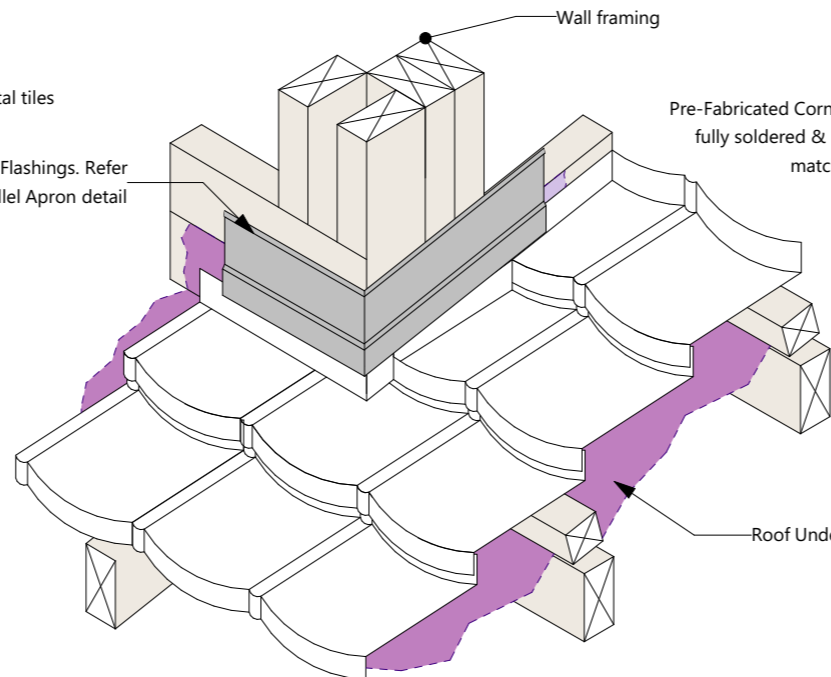
Step 6 - Corner Flashing



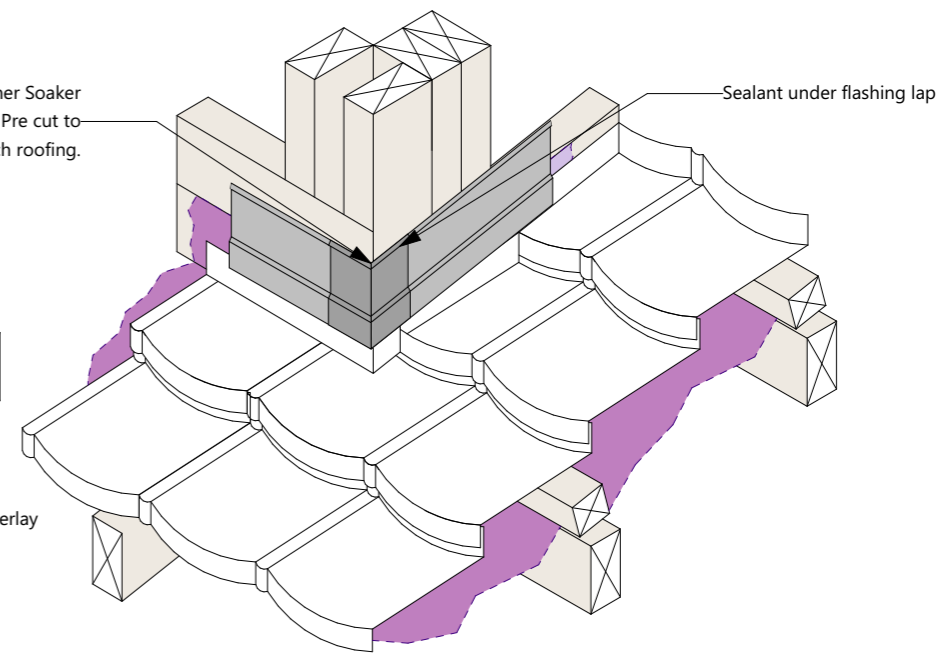
Step 7 - Cladding



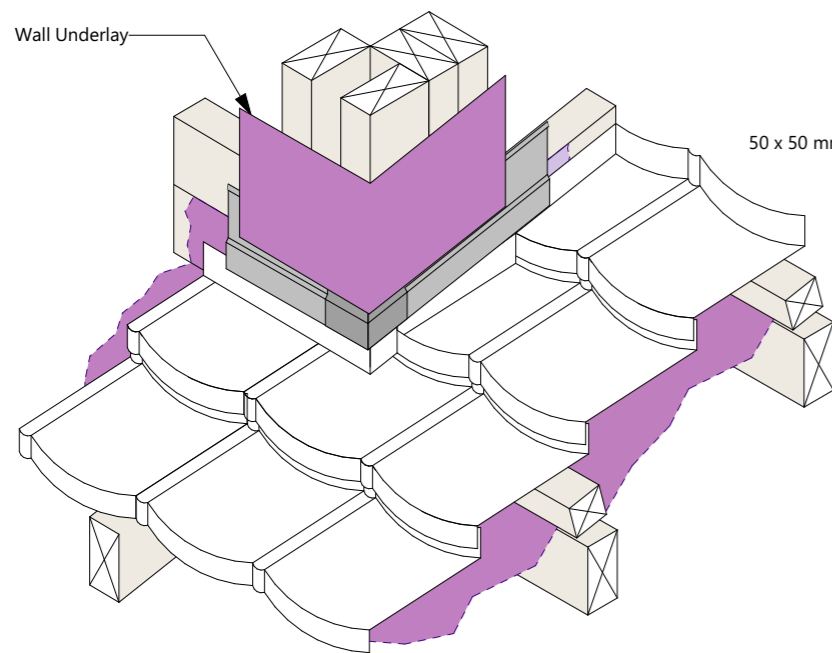
Step 1 - Roofing



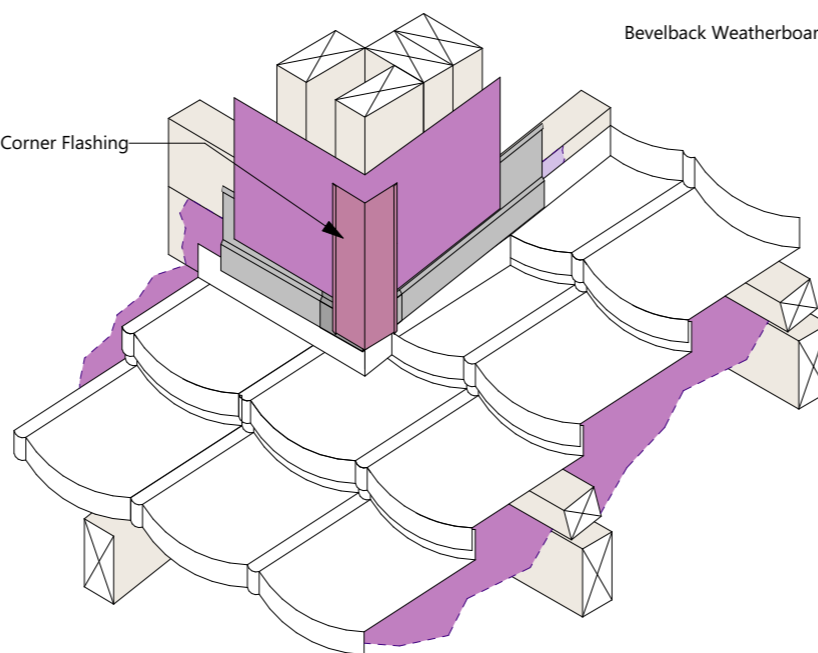
Step 2 - Over Flashings



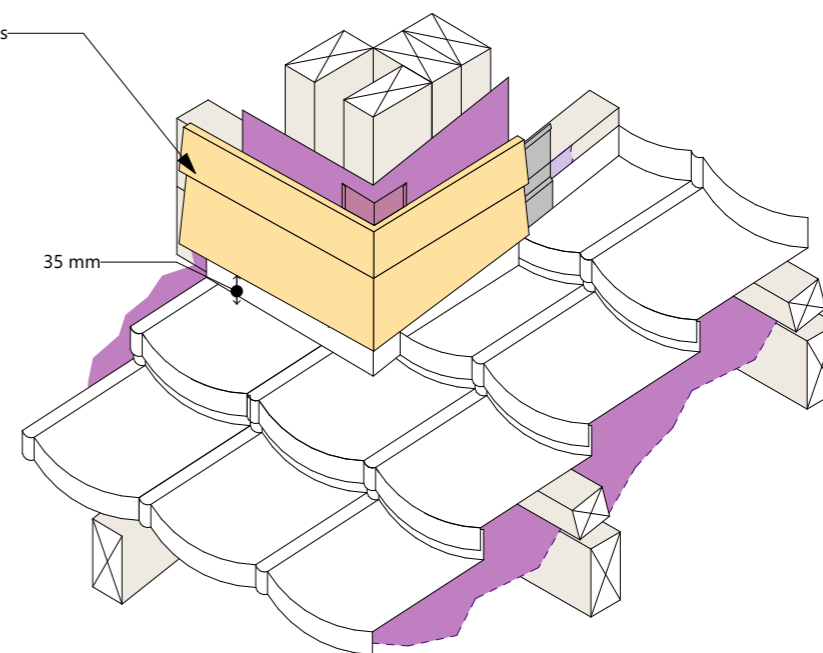
Step 3 - Corner Soaker



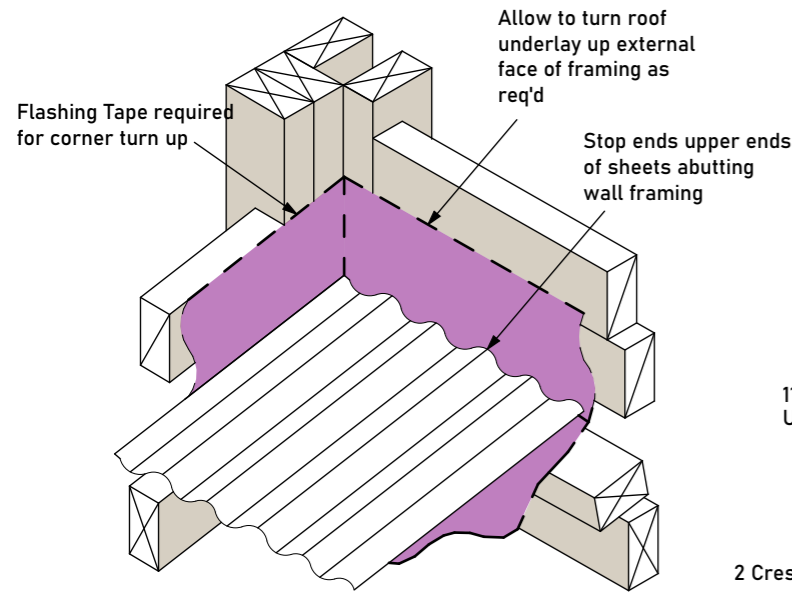
Step 4 - Wall Underlay



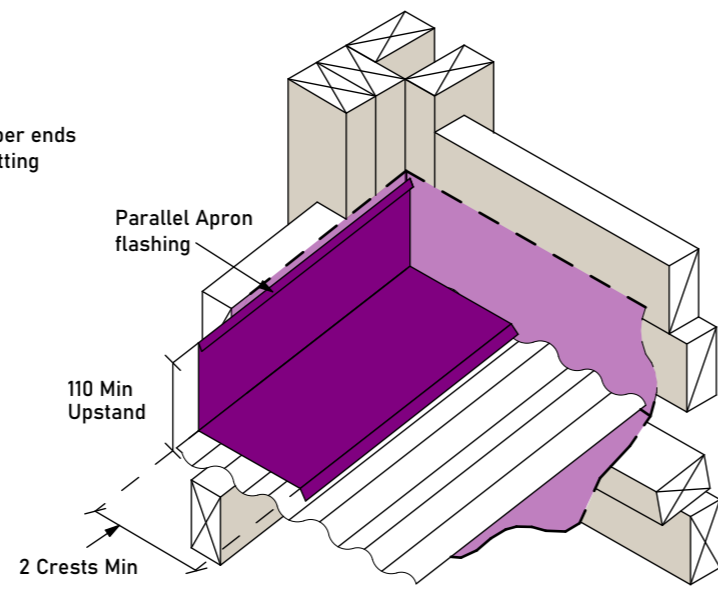
Step 5 - Corner Flashing



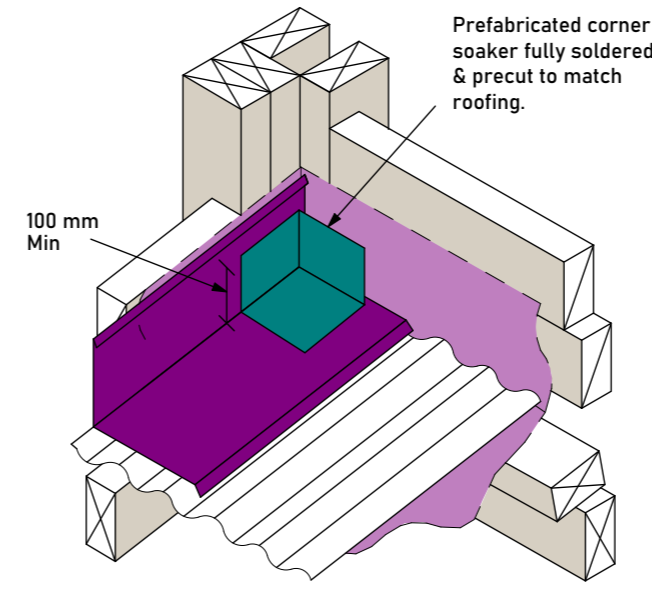
Step 6 - Cladding



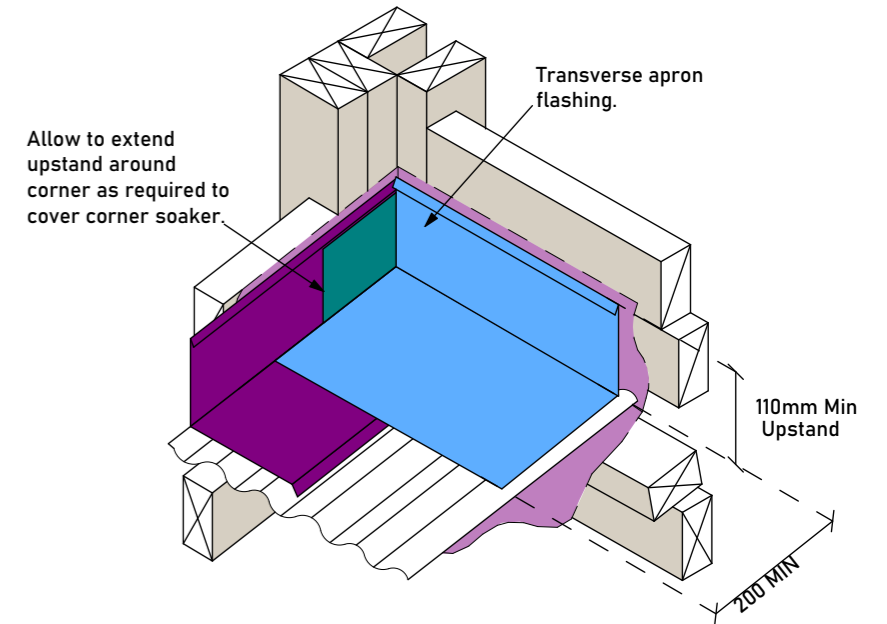
Step 1 - Roofing and Underlay



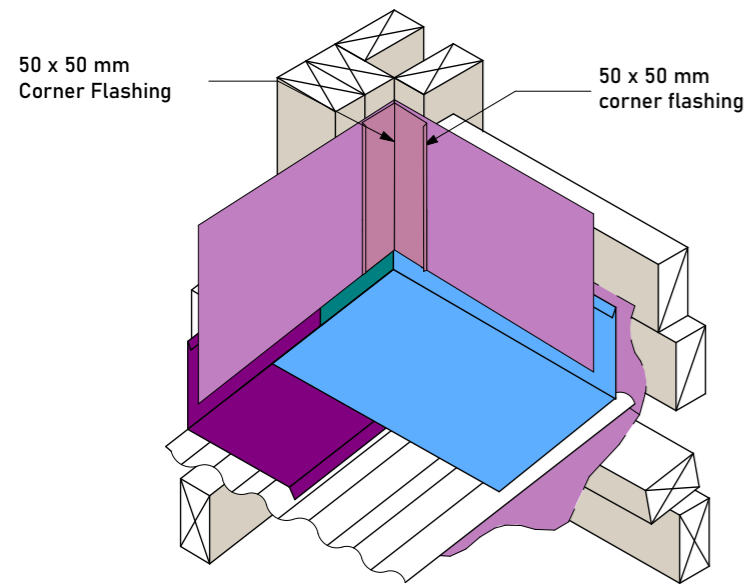
Step 2 - Transverse Flashing



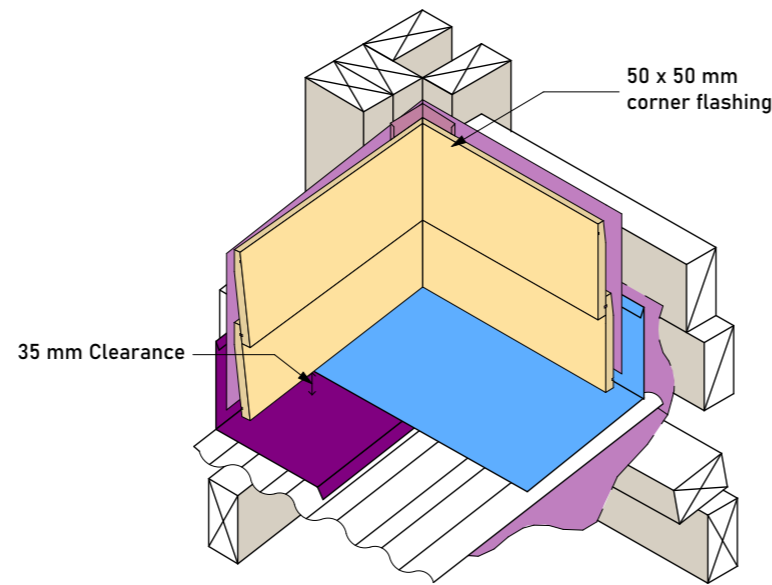
Step 3 - Transverse Apron Flashing



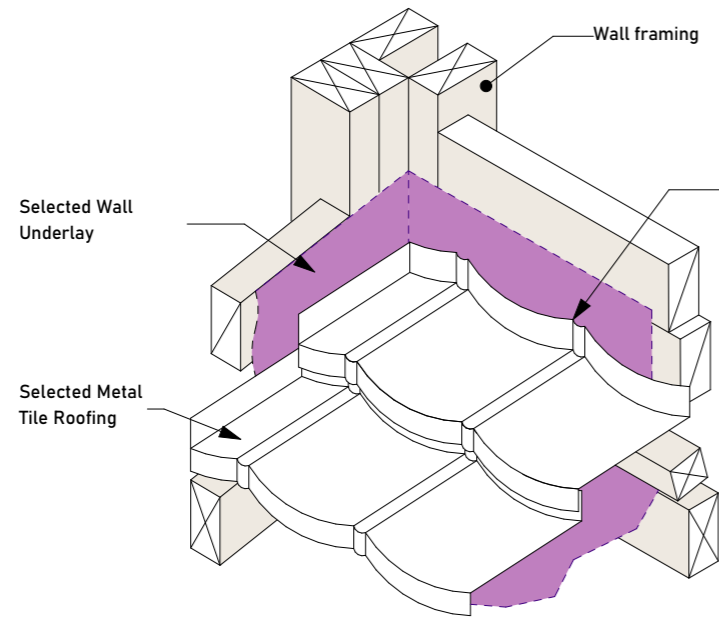
Step 4 - Parallel Apron Flashing



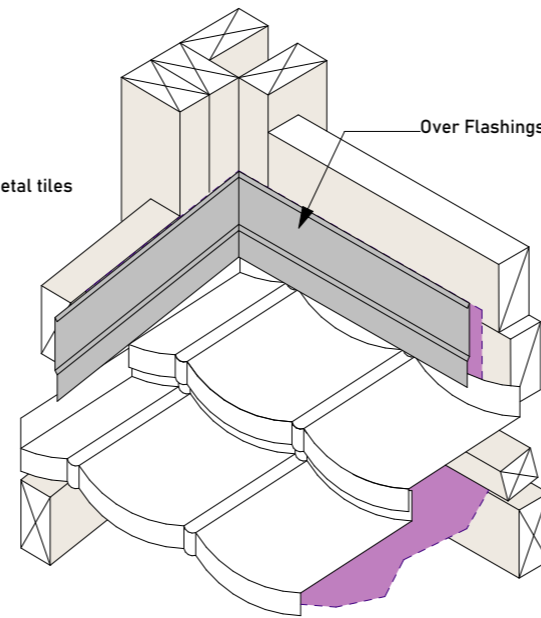
Step 5 - Corner Flashing



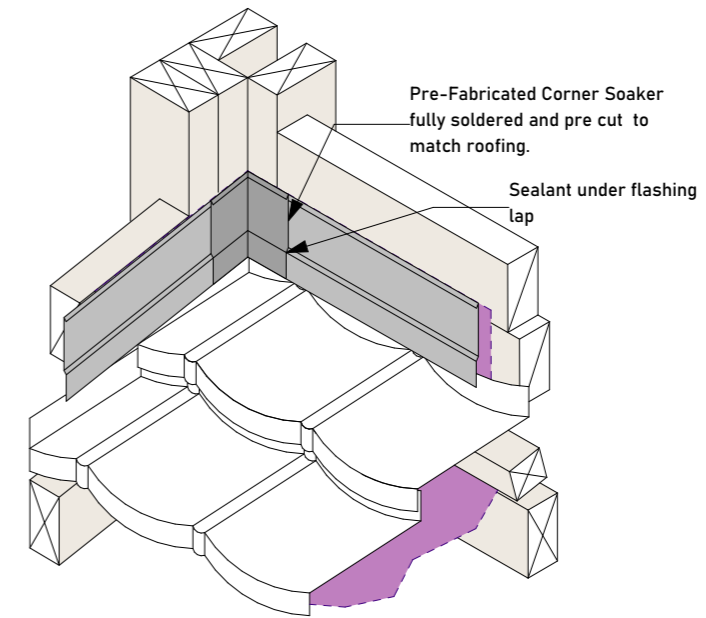
Step 6 - Cladding



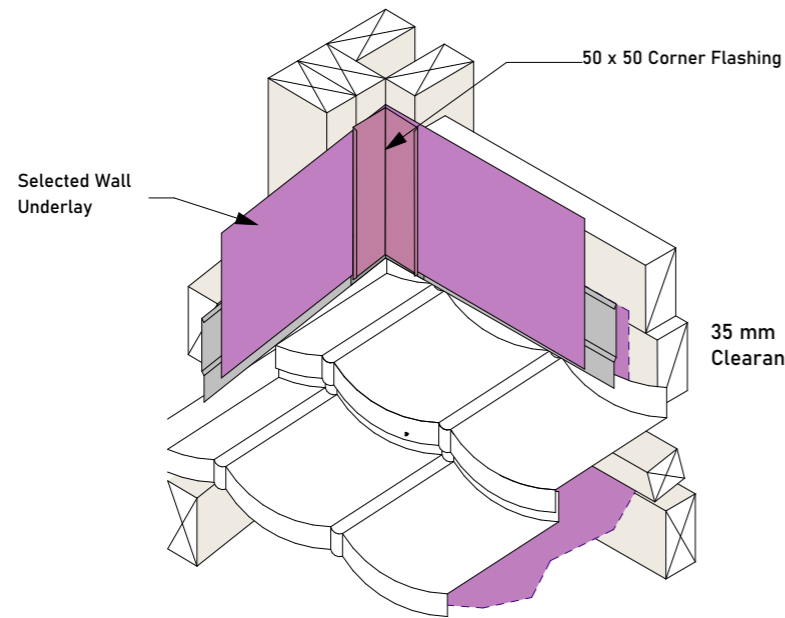
Step 1 - Roofing



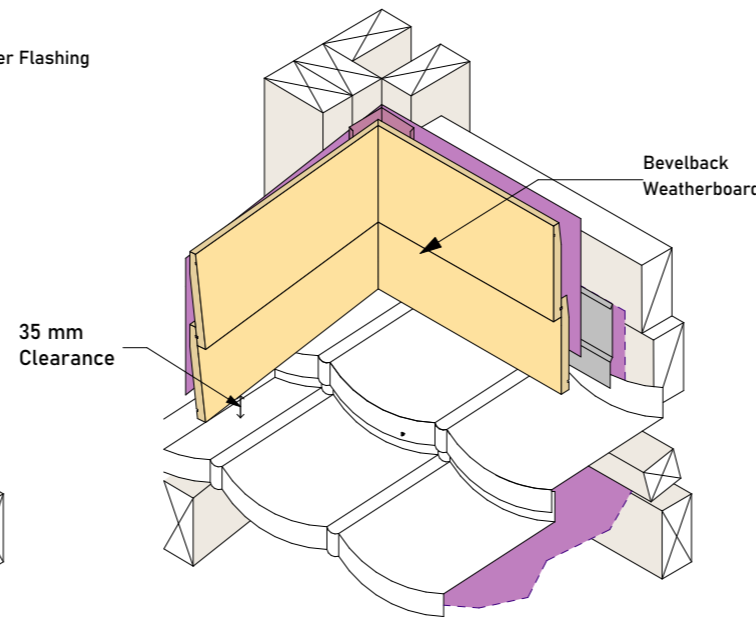
Step 2 - Over Flashings



Step 3 - Corner Soaker



Step 4 - Corner Flashing



Step 5 - Cladding

