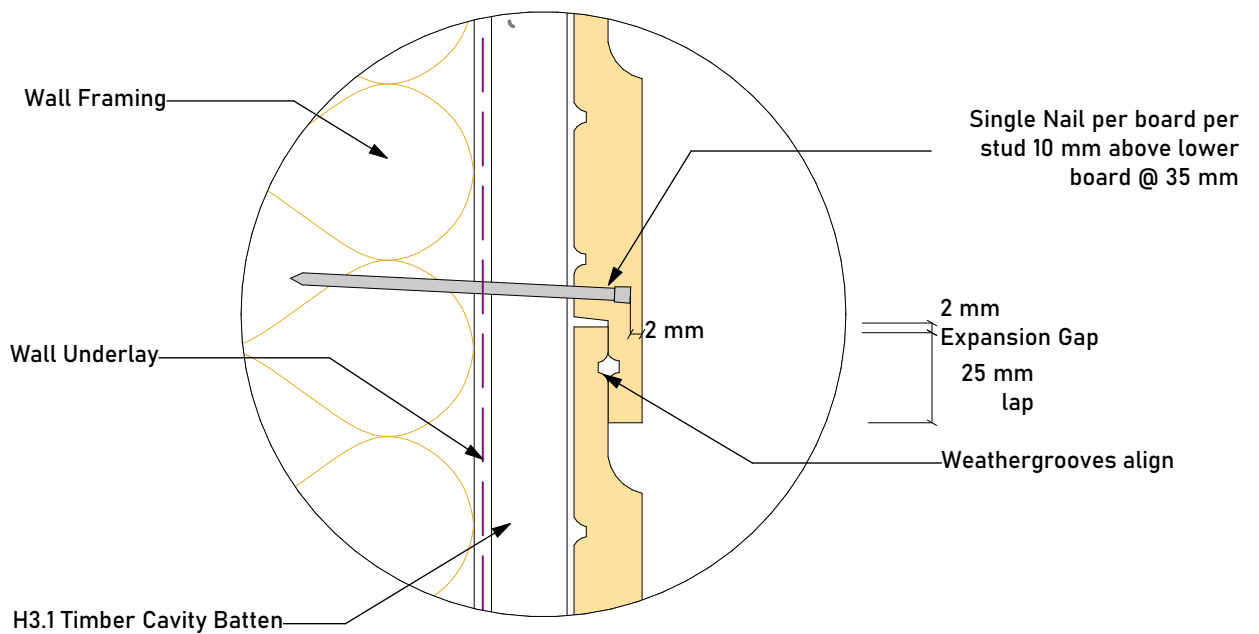
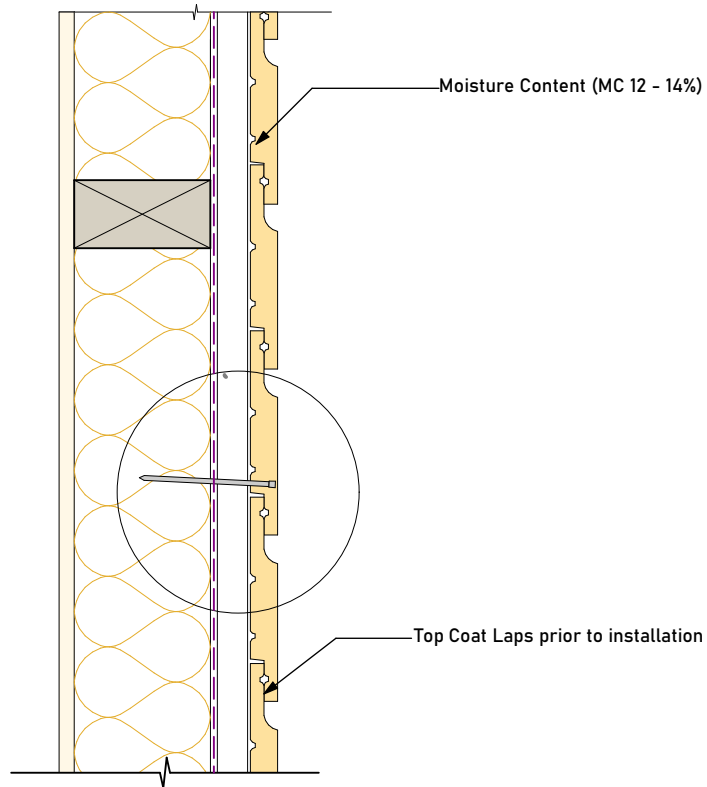
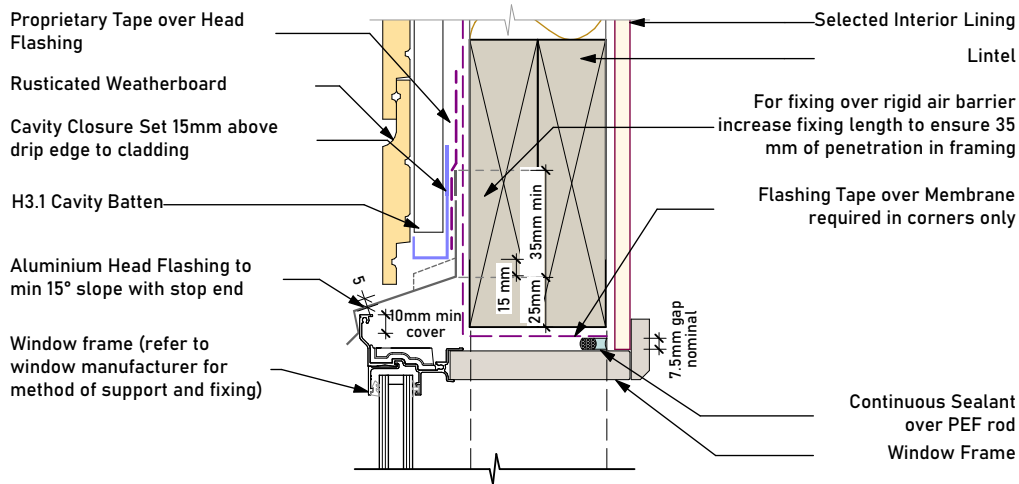


**OTC Rusticated - Cavity**

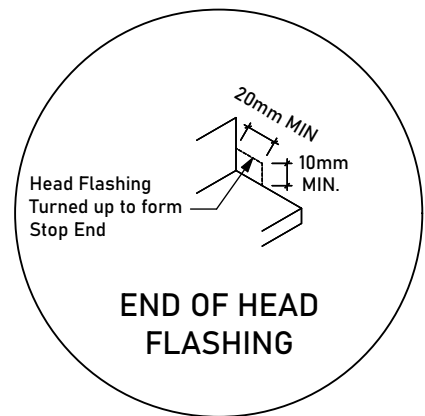
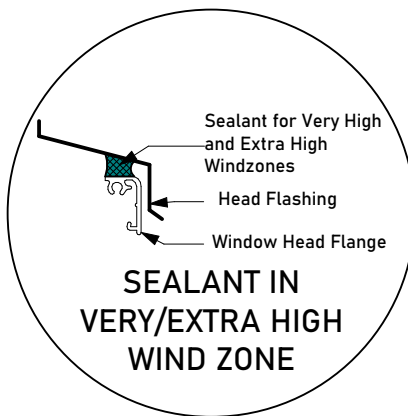
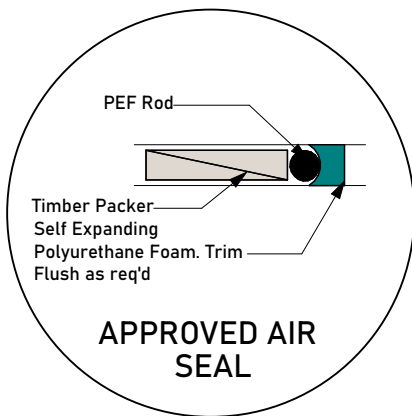
Layout ID	Layout Name	Scale
1	Index	
2	Rusticated Cavity Fix - Set Out	1:5, 1:2
3	Rusticated Cavity Fix - Window Head	1:5
4	Rusticated Cavity Fix - 3D Window Head	1:5
5	Rusticated Cavity Fix - Window Jamb	1:5
6	Rusticated Cavity Fix - Window Sill	1:5
7	Rusticated Cavity Fix - 3D Window Sill	1:10
8	Rusticated Cavity Fix - Foundation Concrete	1:5
9	Rusticated Cavity Fix - Foundation Timber	1:5
10	Rusticated Cavity Fix - Door Sill	1:5
11	Rusticated Cavity Fix - Door Jamb	1:5
12	Rusticated Cavity Fix - Door Head	1:5
13	Rusticated Cavity Fix - Soffit	1:5
14	Rusticated Cavity Fix - External Corner x 2	1:5
15	Rusticated Cavity Fix - Internal Corner	1:5
16	Rusticated Cavity Fix - Meterbox Head	1:5
17	Rusticated Cavity Fix - Meterbox Sill	1:5
18	Rusticated Cavity Fix - Pipe Penetration	1:5, 1:10
19	Rusticated Cavity Fix - Fascia Eaves - No Soffit	1:5
20	Rusticated Cavity Fix - Apron 1 Metal Tiles	1:10
21	Rusticated Cavity Fix - Apron 2 - Metal Tiles	1:10
22	Rusticated Cavity Fix - Apron Long Run	1:10
23	Rusticated Cavity Fix - Inter-Storey	1:5
24	Rusticated Cavity Fix - Parapet	1:5
25	Rusticated Cavity Fix - 3D Parapet 1	1:20, 1:10
26	Rusticated Cavity Fix - 3D Parapet 2	1:20
27	Rusticated Cavity Fix - 3D Gutter to Wall	1:20
28	Rusticated Cavity Fix - 3D Gutter to Wall Metal Tiles	1:20
29	Rusticated Cavity Fix - 3D Apron (External Corner) - Long Run	1:10
30	Rusticated Cavity Fix - 3D Apron (External Corner) - Metal Til...	1:10
31	Rusticated Cavity Fix - 3D Apron (Internal Corner) - Long Run	1:10
32	Rusticated Cavity Fix - 3D Apron (Internal Corner) Long Run	1:10

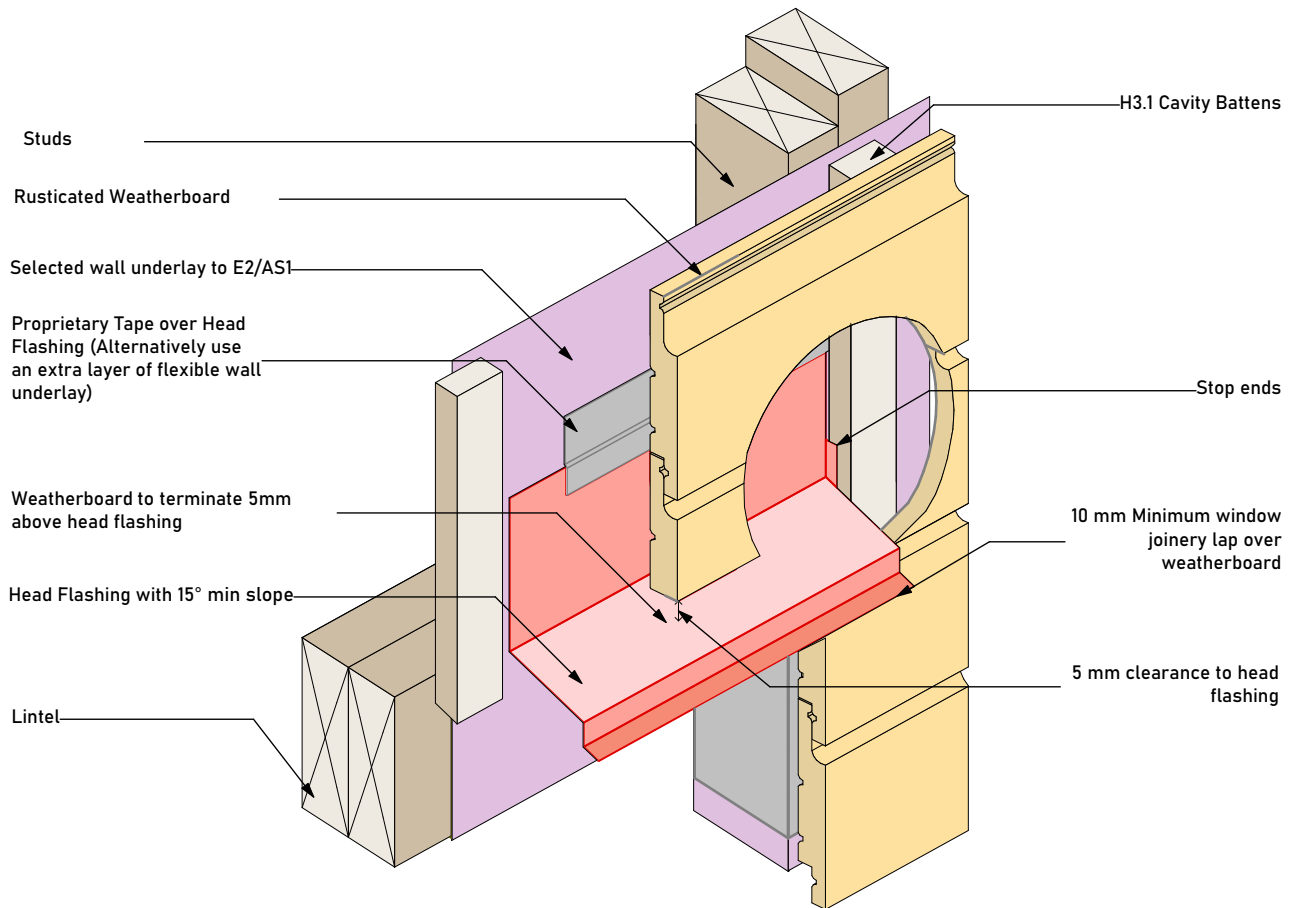


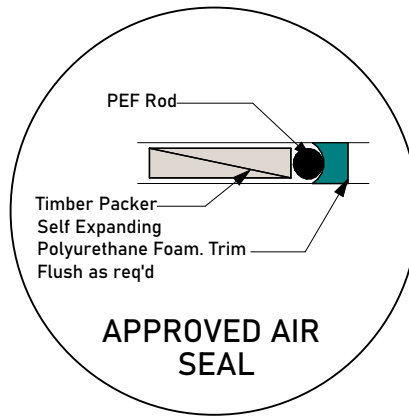
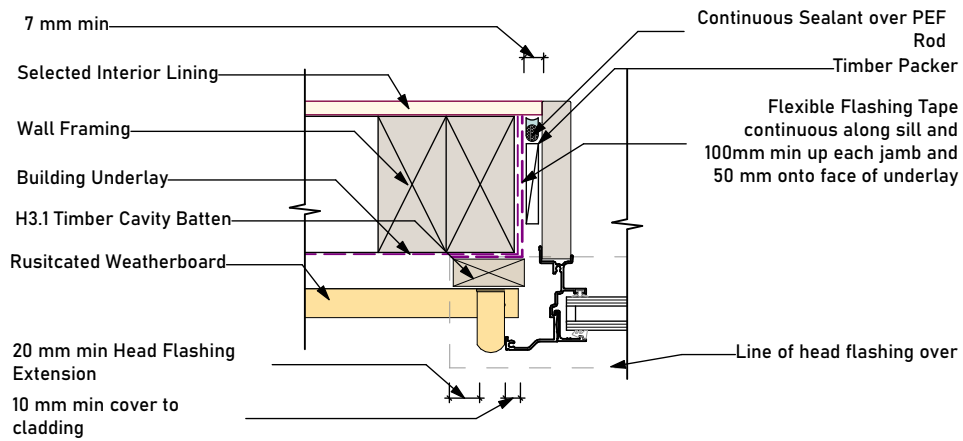


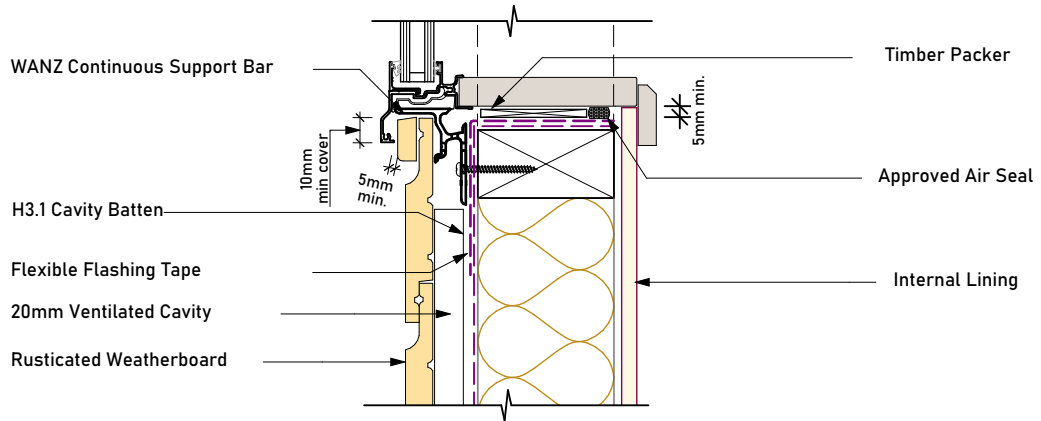
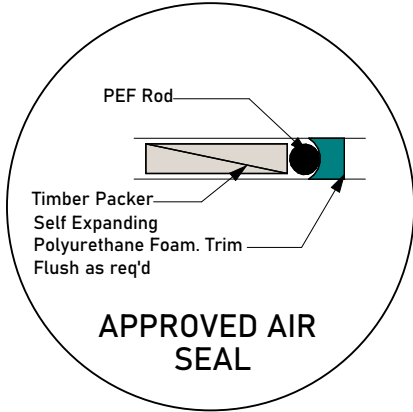
**NOTES:**

1. Flashing materials must be selected based on exposure zone, refer to NZS:3604 and table 20 NZBC E2/AS1.
2. Flashing tape must be compatible with the selected underlay.
3. Flexible underlay to comply with acceptable solution E2/AS1.
4. When Rigid air barriers are used flashing tape to be applied to the entire window opening.



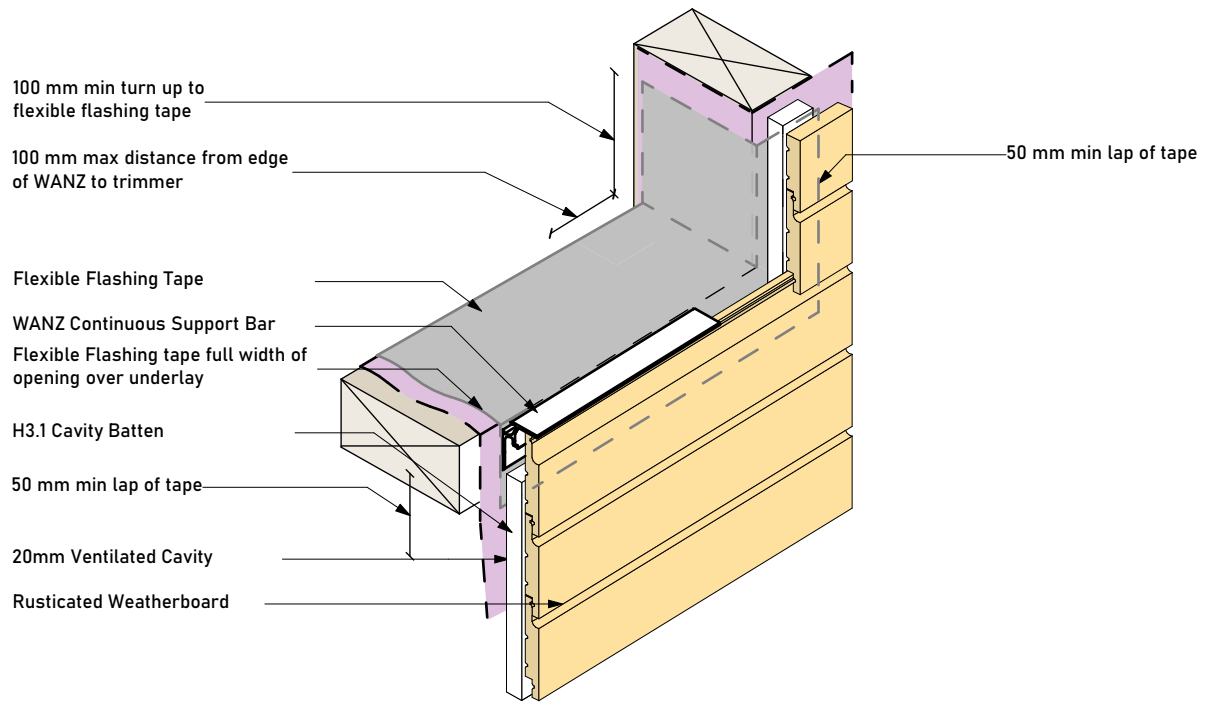






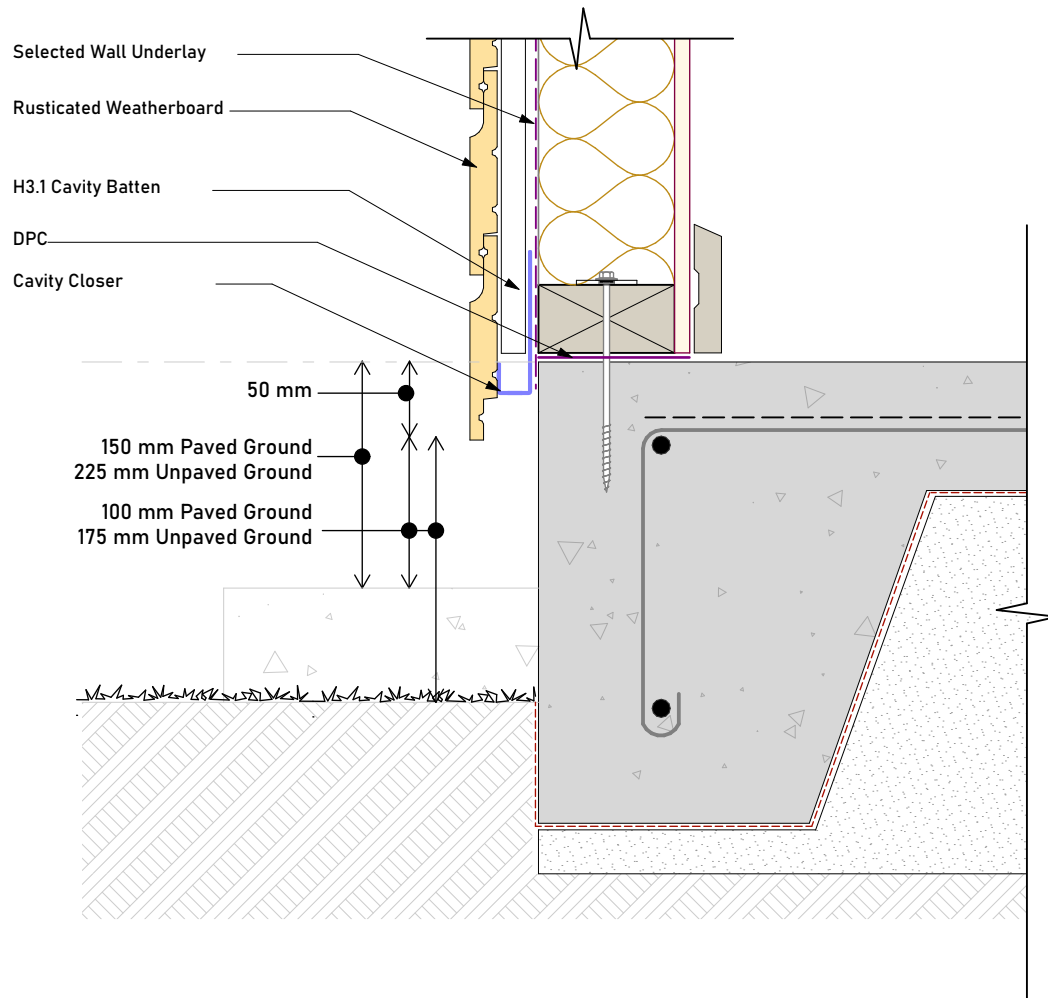
**NOTES:**

1. Flashing materials must be selected based on exposure zone, refer to NZS:3604 and table 20 NZBC E2/AS1.
2. Flashing tape must be compatible with the selected underlay.
3. Flexible underlay to comply with acceptable solution E2/AS1.
4. When Rigid air barriers are used flashing tape to be applied to the entire window opening.

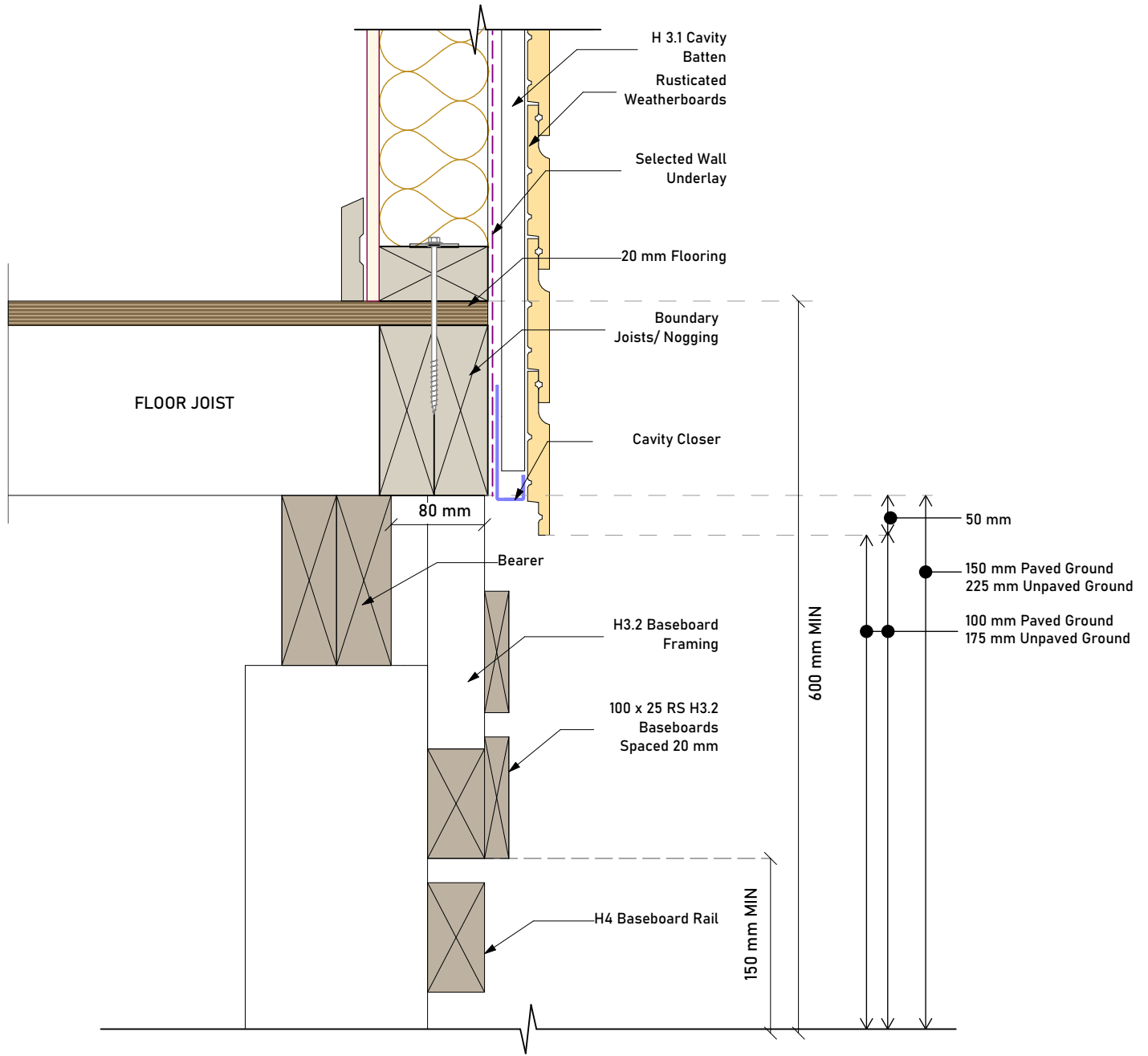


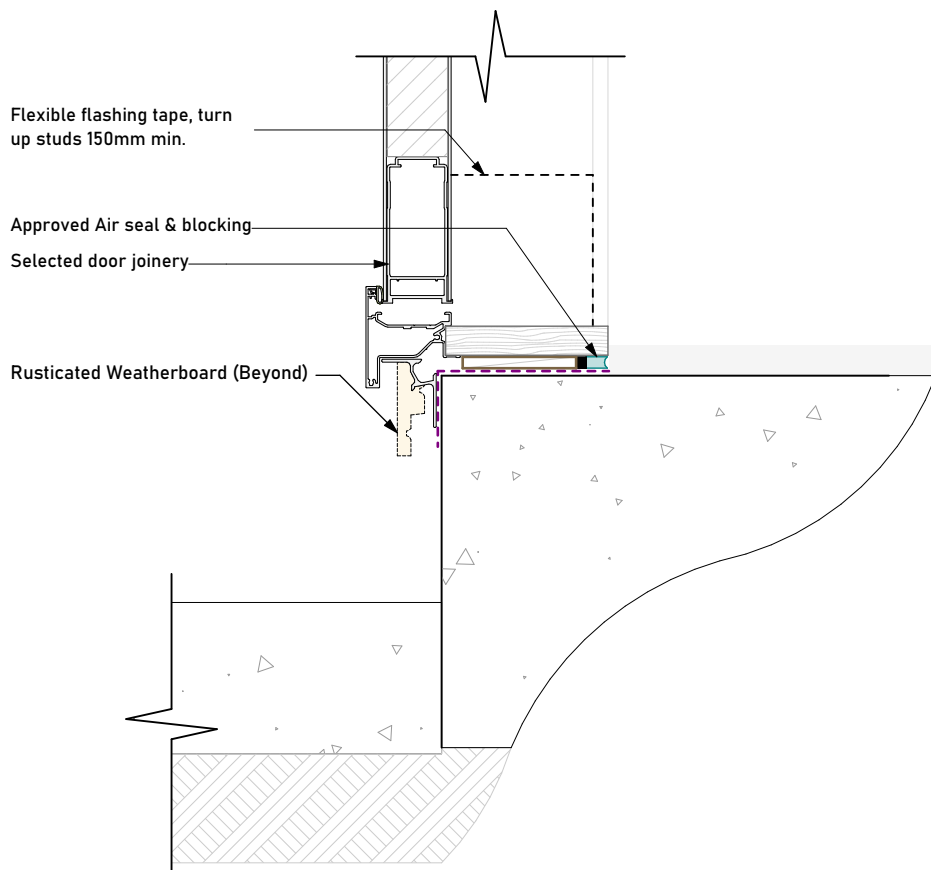
**NOTES:**

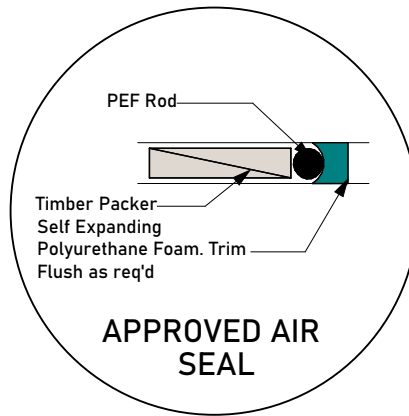
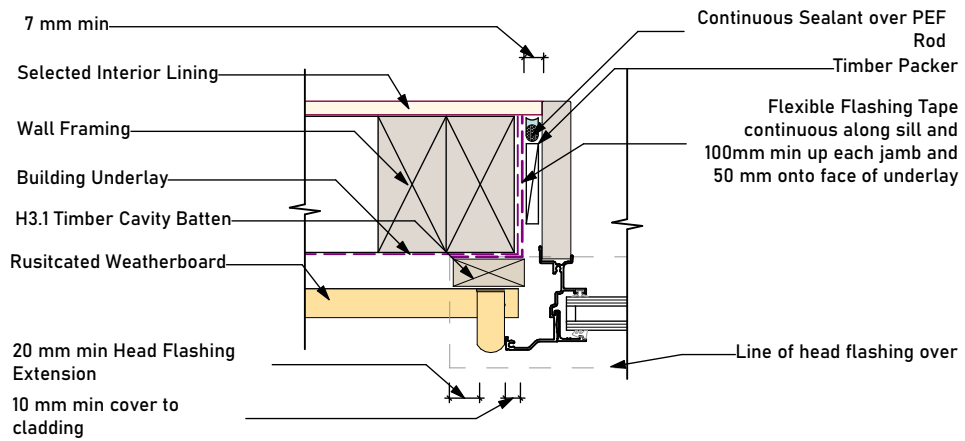
1. Flashing materials must be selected based on exposure zone, refer to NZS:3604 and table 20 NZBC E2/AS1.
2. Flashing tape must be compatible with the selected underlay.
3. Flexible underlay to comply with acceptable solution E2/AS1.
4. When Rigid air barriers are used flashing tape to be applied to the entire window opening.

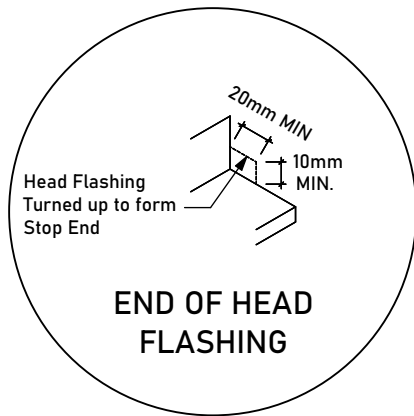
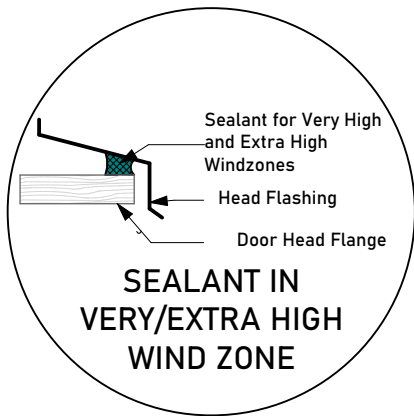
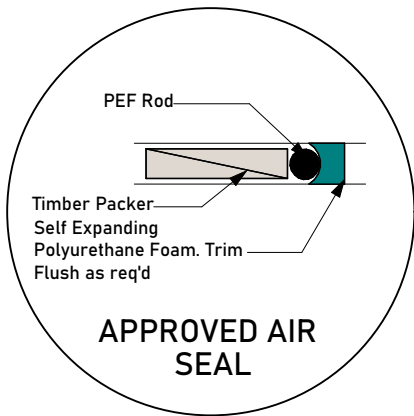
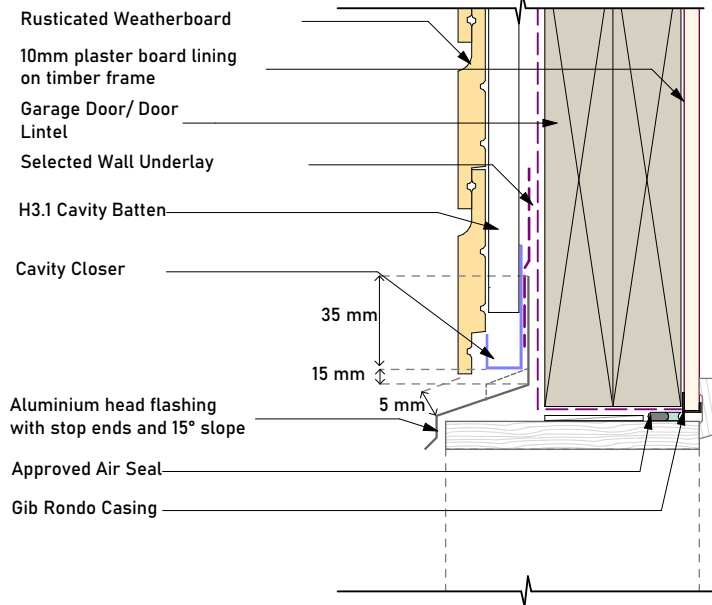


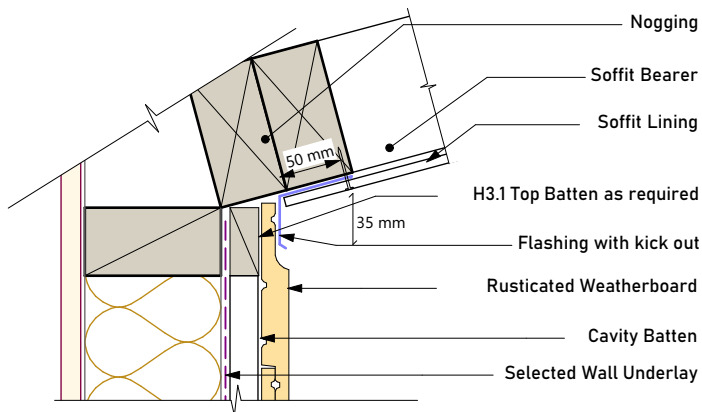
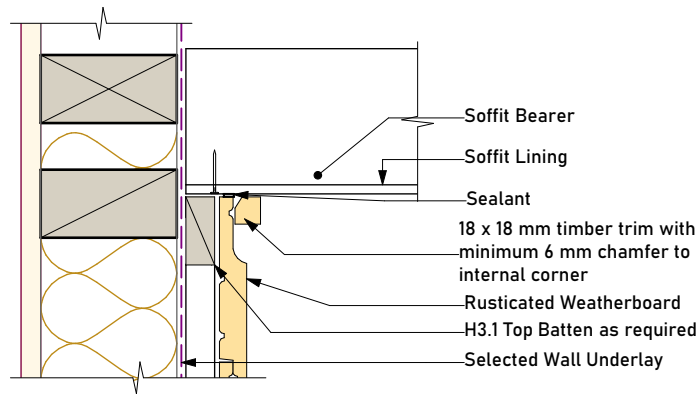




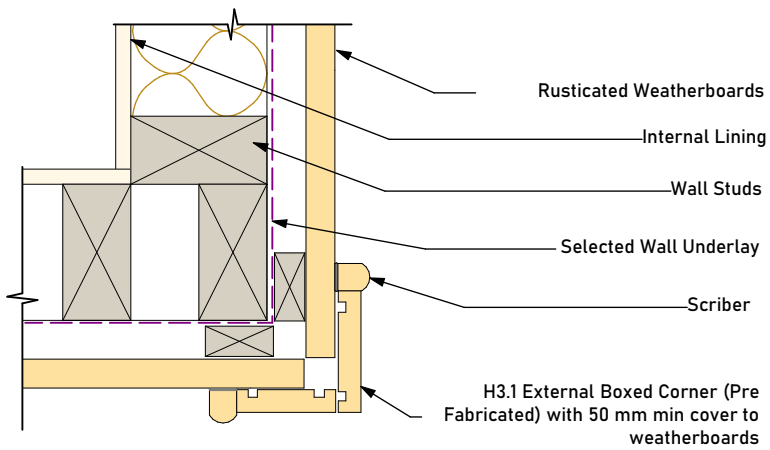
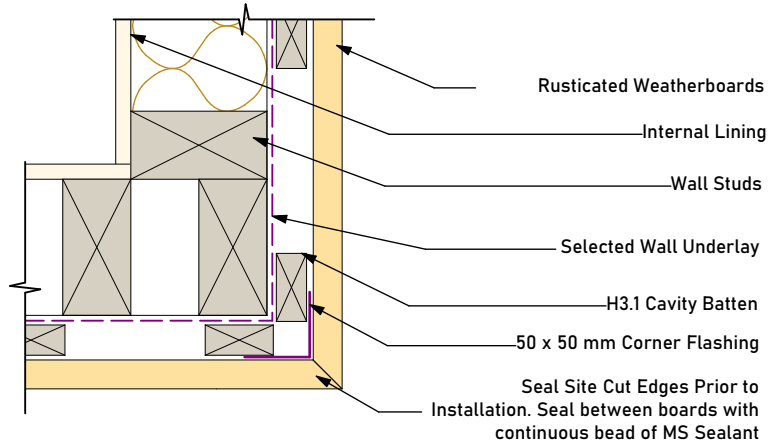




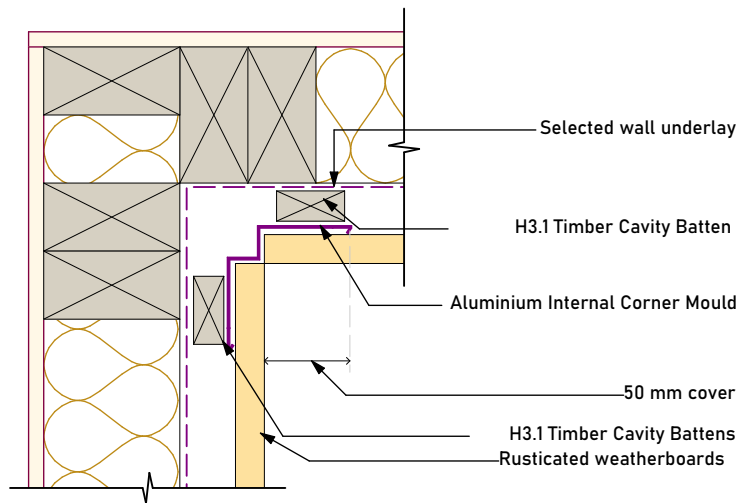
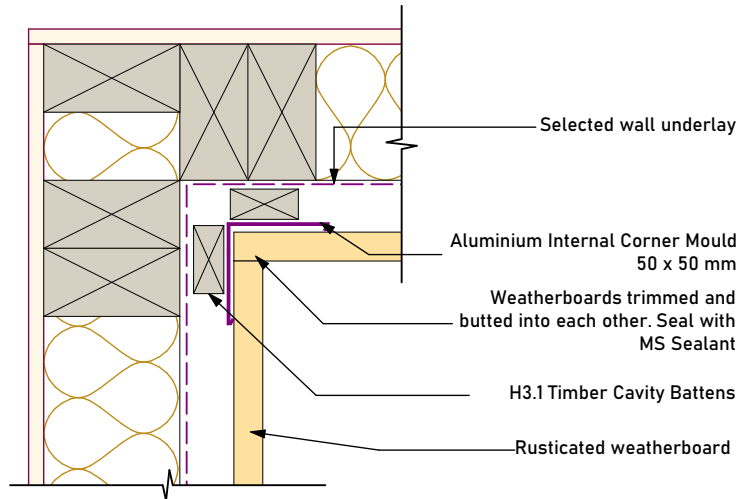


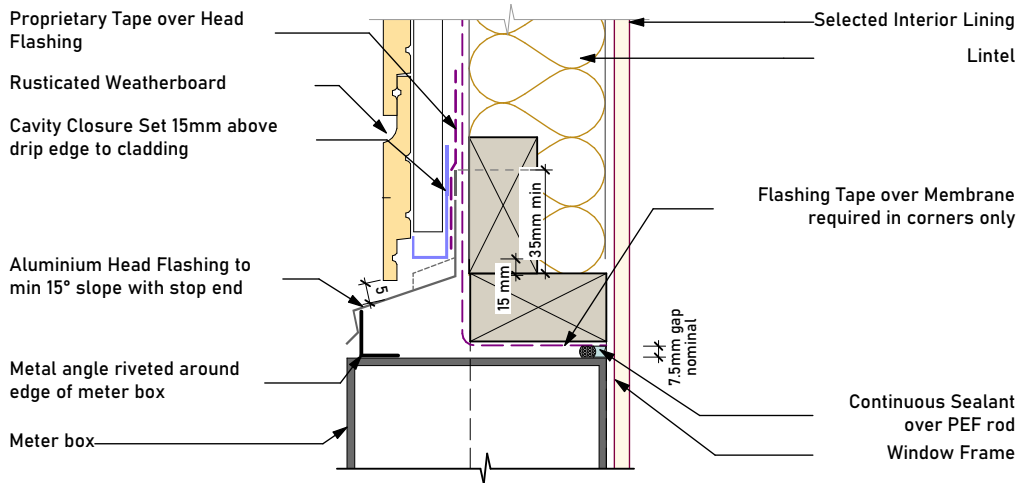


Note: All Site Cut Edges to be Sealed



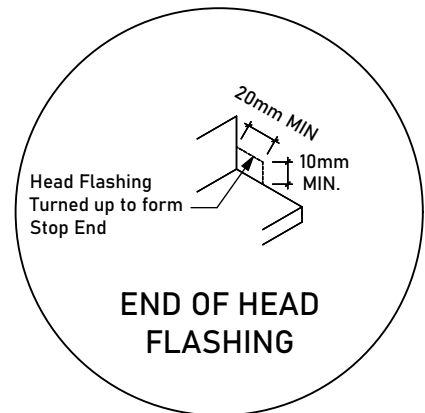
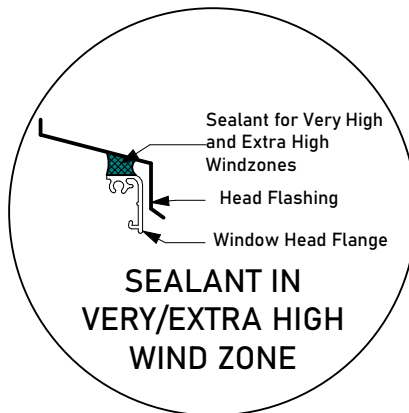
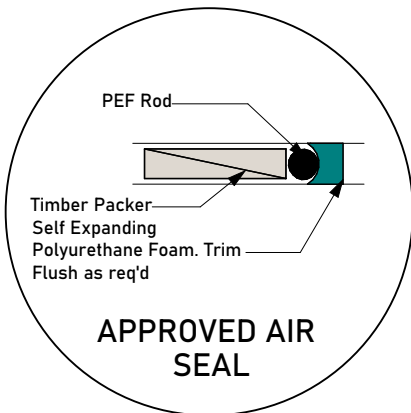
Note: All Site Cut Edges to be Sealed



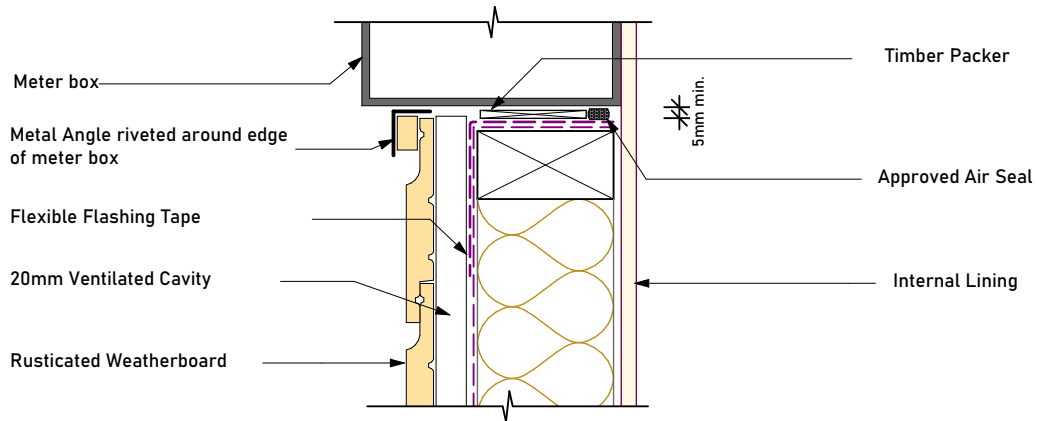
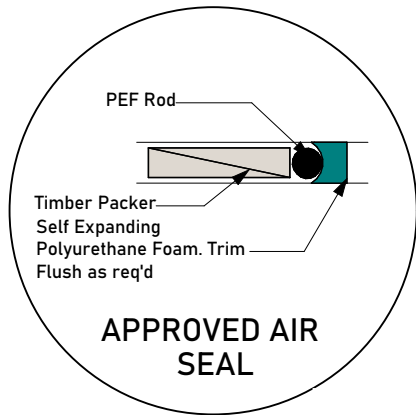


**NOTES:**

1. Flashing materials must be selected based on exposure zone, refer to NZS:3604 and table 20 NZBC E2/AS1.
2. Flashing tape must be compatible with the selected underlay.
3. Flexible underlay to comply with acceptable solution E2/AS1.
4. When Rigid air barriers are used flashing tape to be applied to the entire window opening.

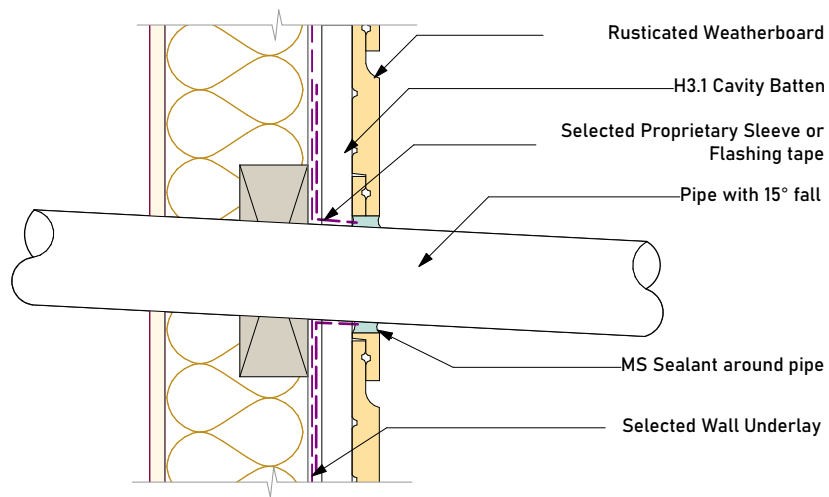
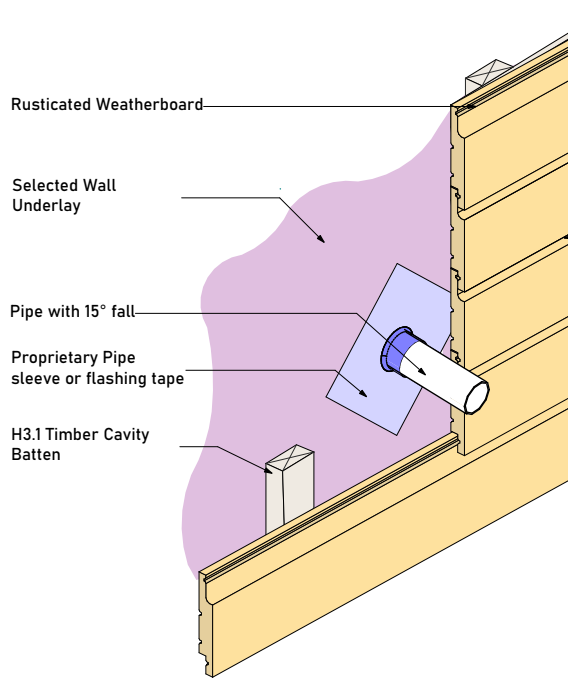


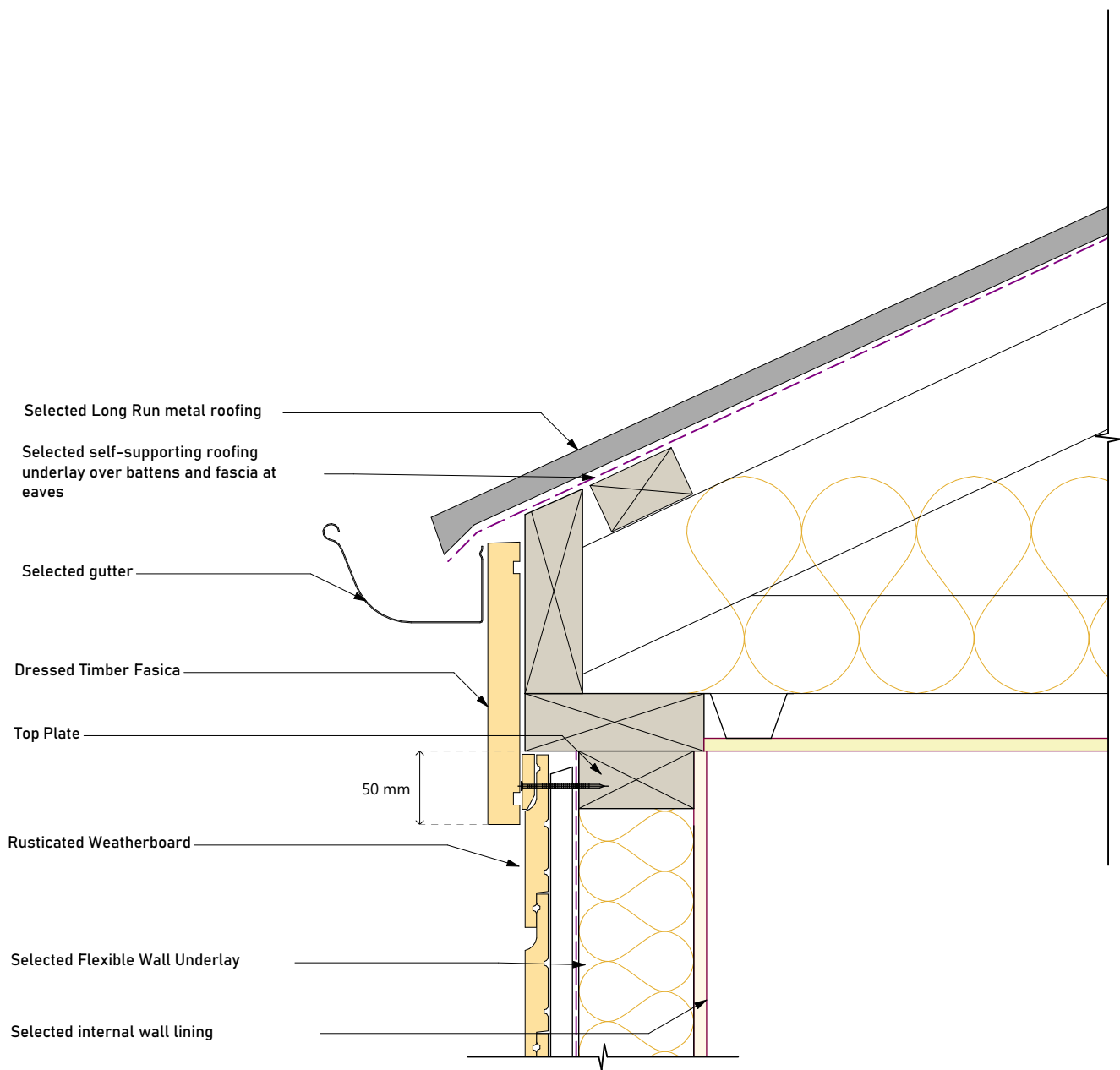




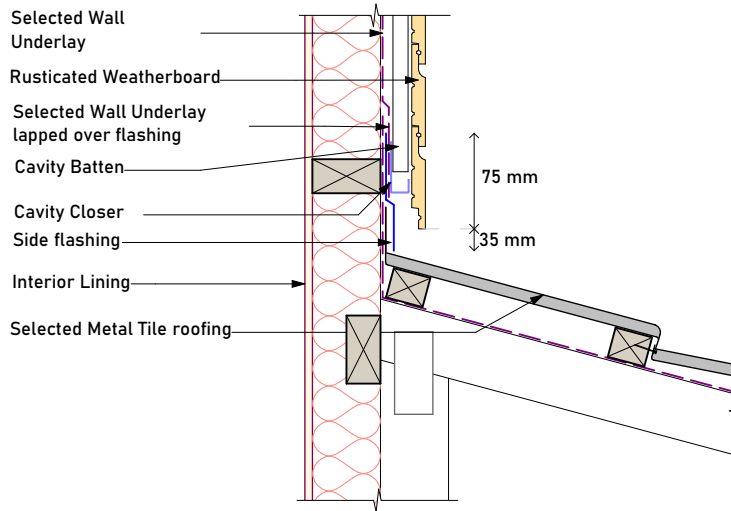
**NOTES:**

1. Flashing materials must be selected based on exposure zone, refer to NZS:3604 and table 20 NZBC E2/AS1.
2. Flashing tape must be compatible with the selected underlay.
3. Flexible underlay to comply with acceptable solution E2/AS1.
4. When Rigid air barriers are used flashing tape to be applied to the entire window opening.

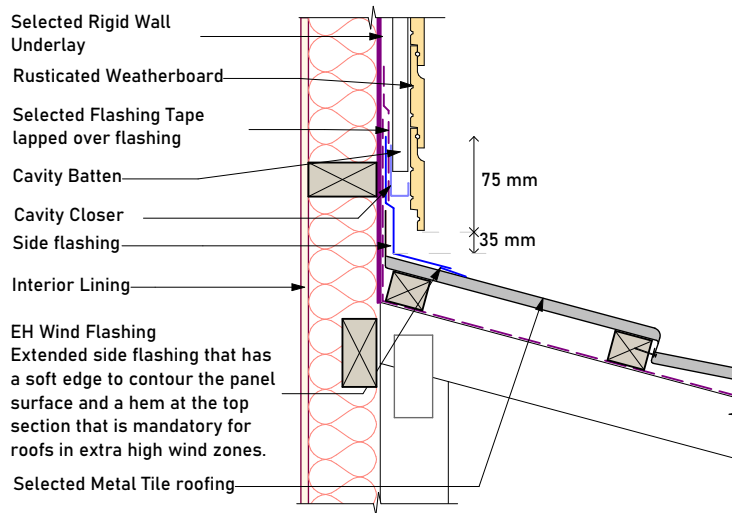




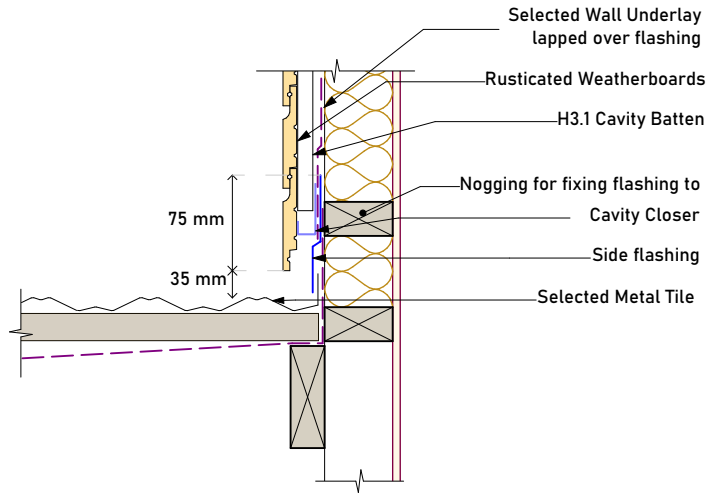
## Wind Zones - Low to Very High



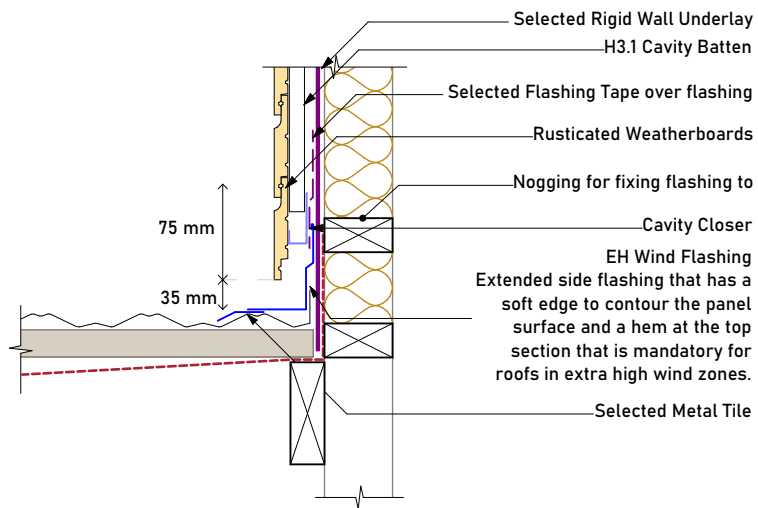
## Wind Zones - Extra High

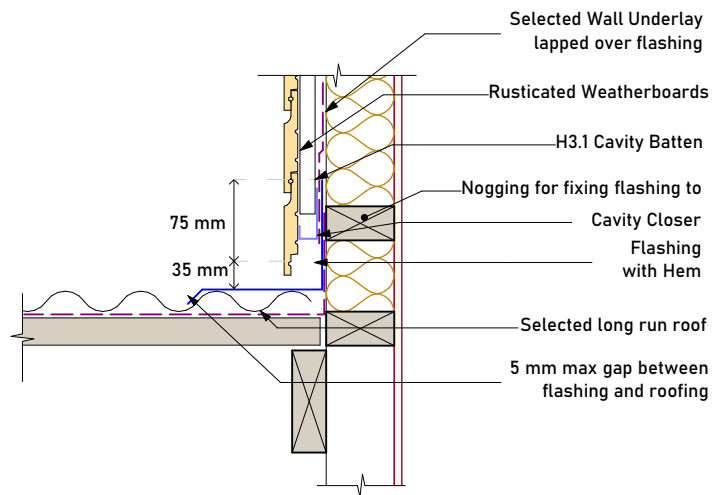
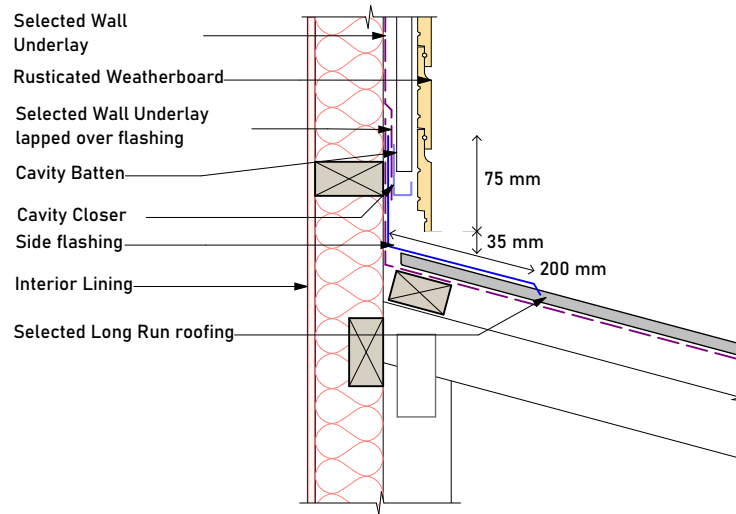


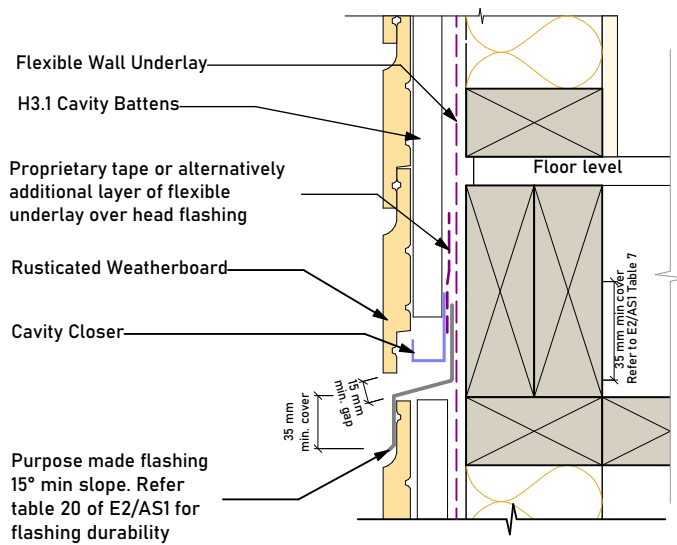
### Wind Zones - Low to Very High

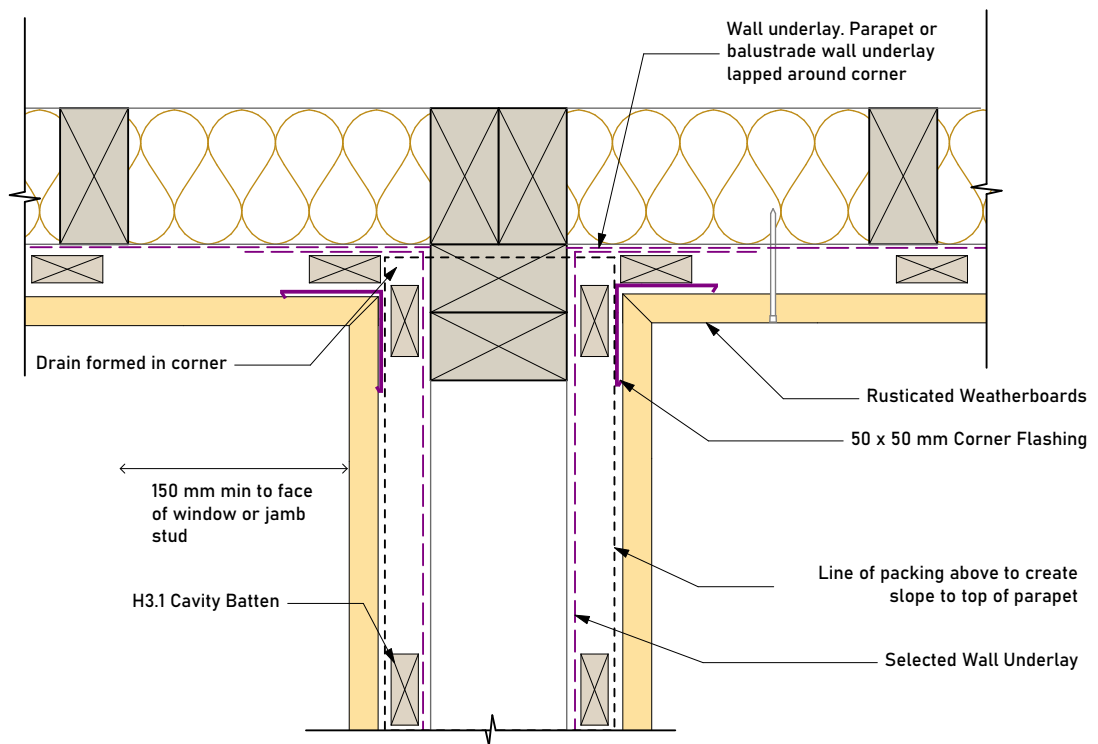
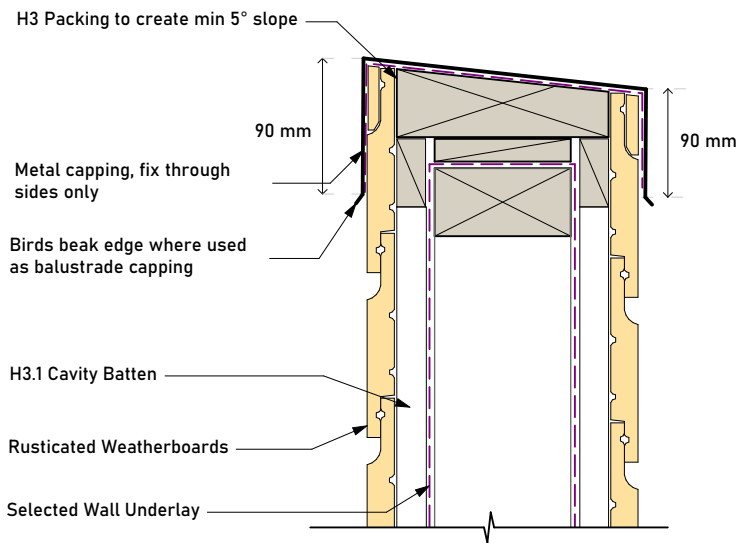


### Wind Zones - Extra High

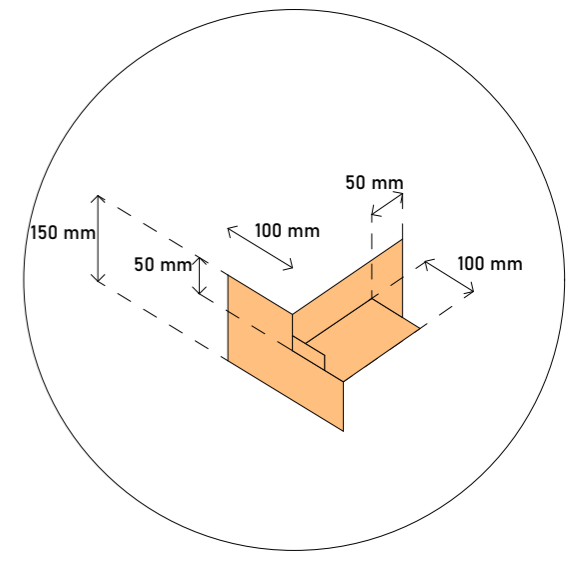
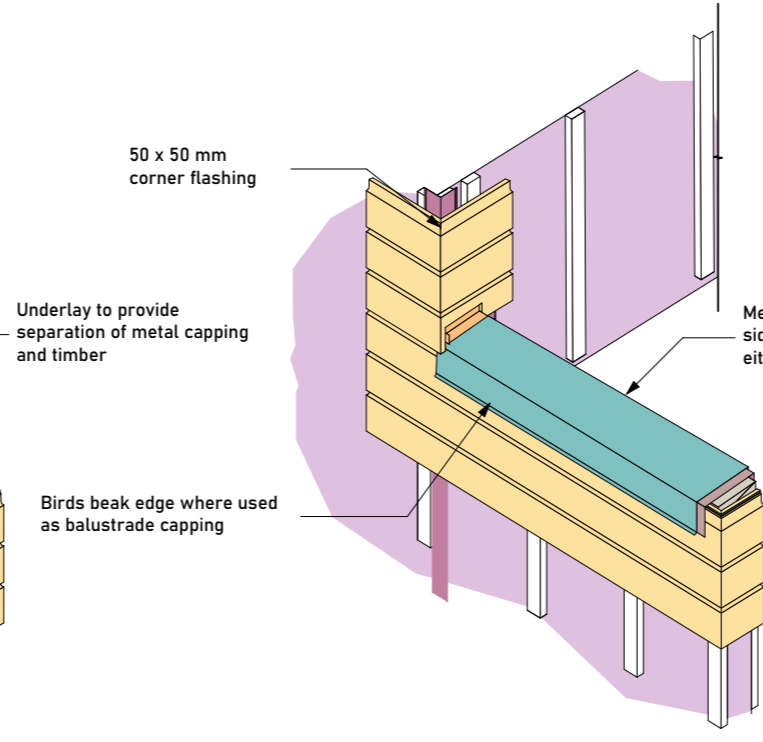
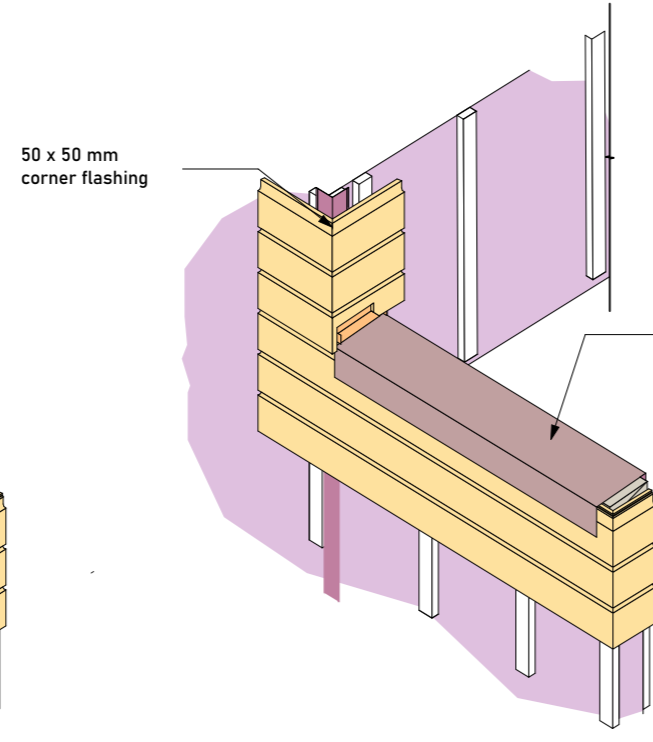
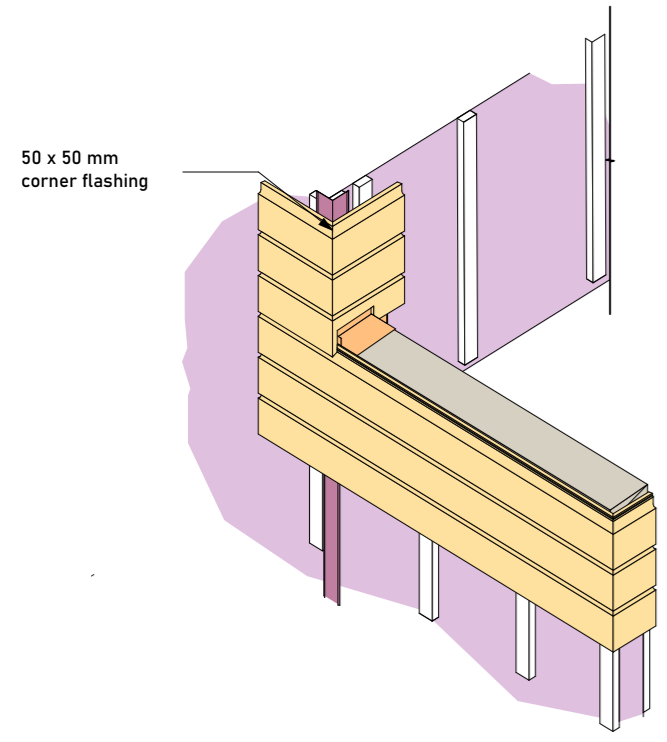
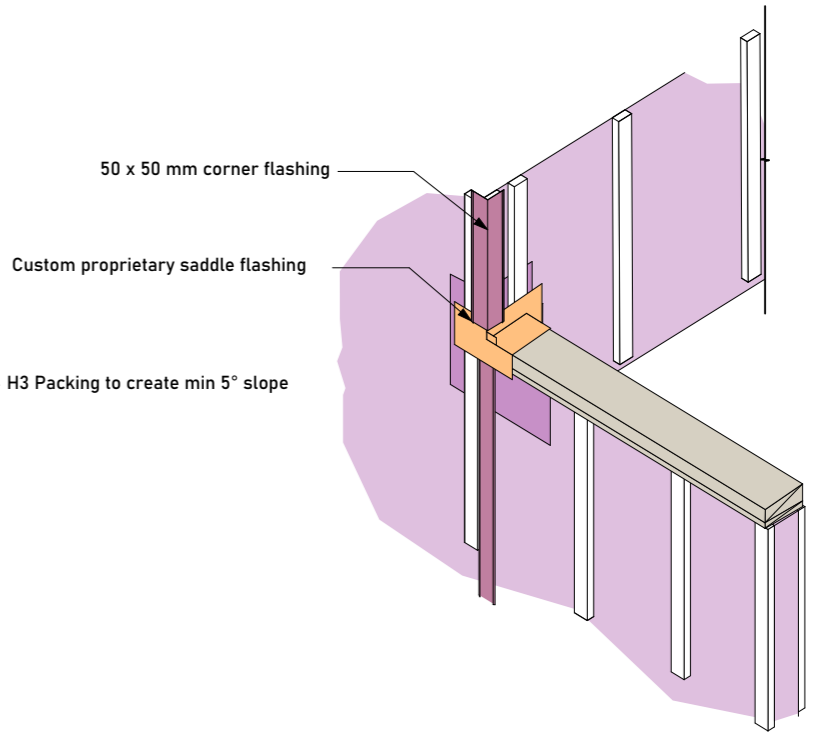
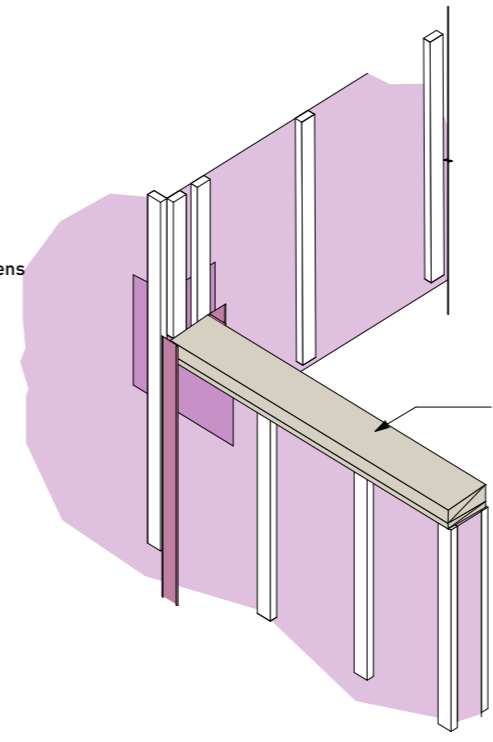
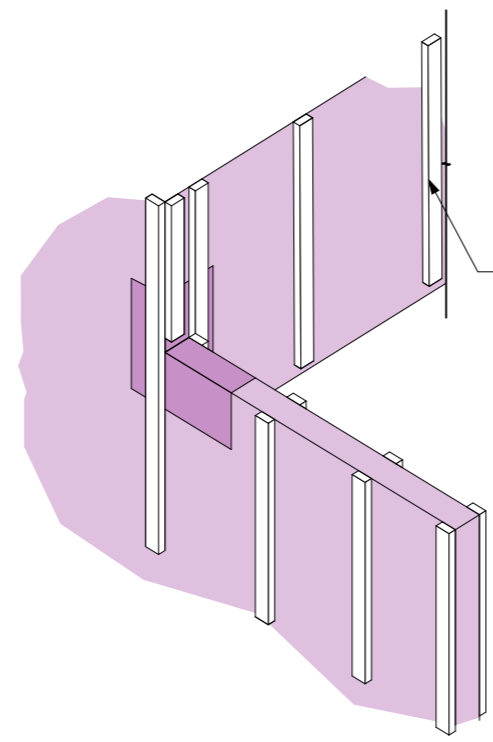
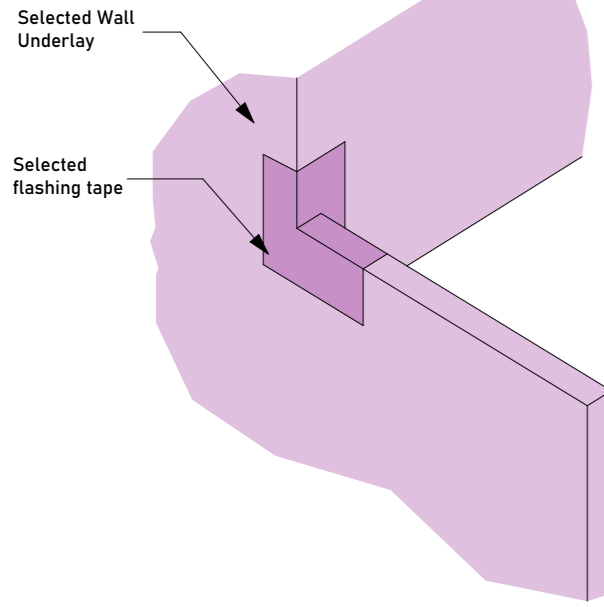


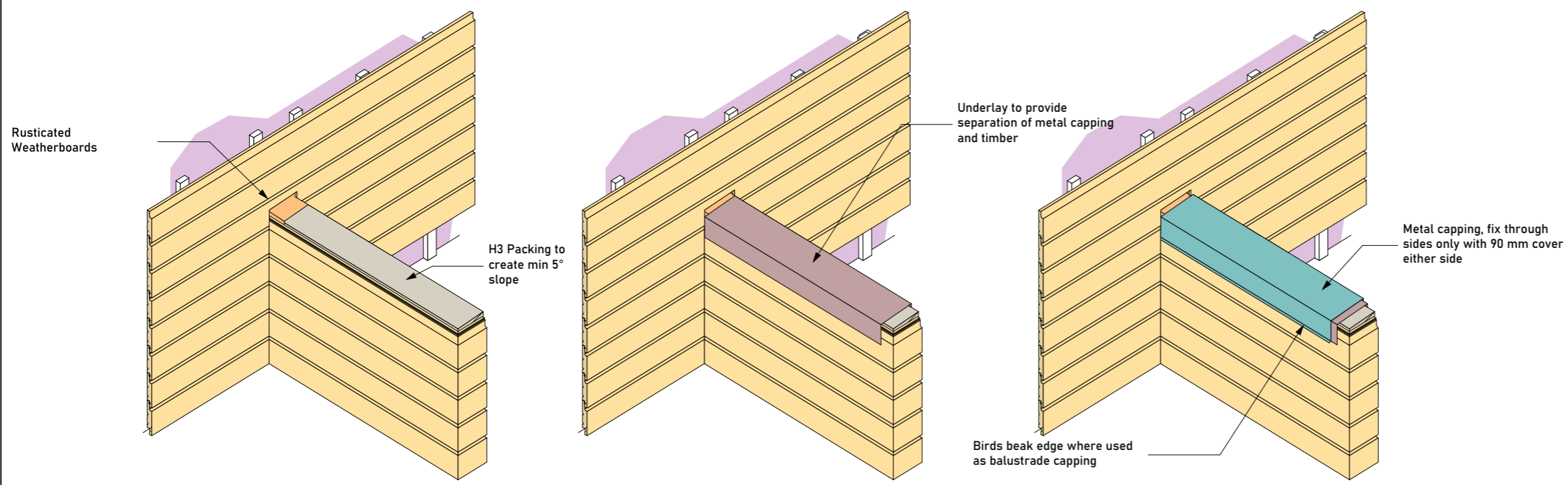
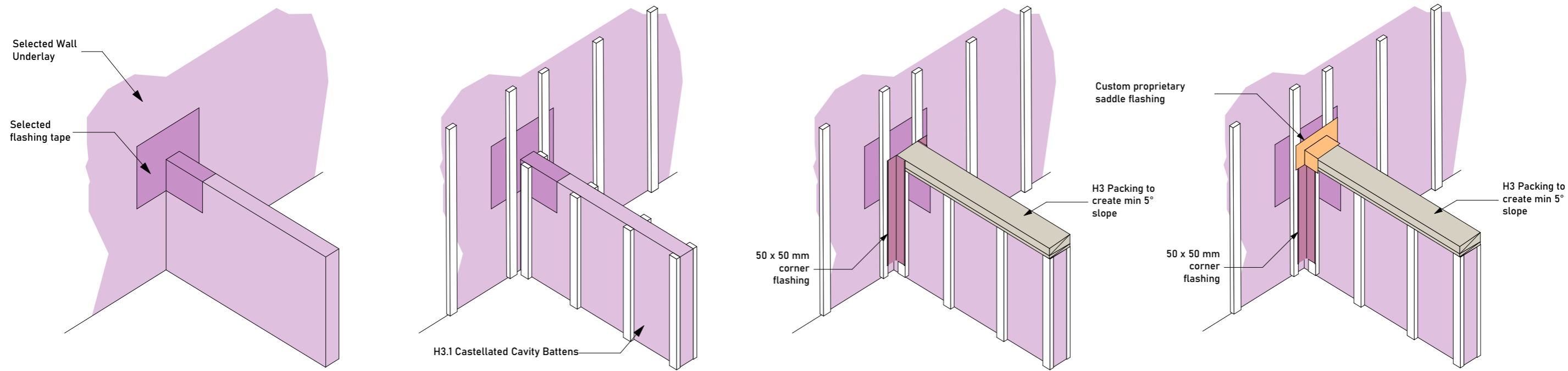


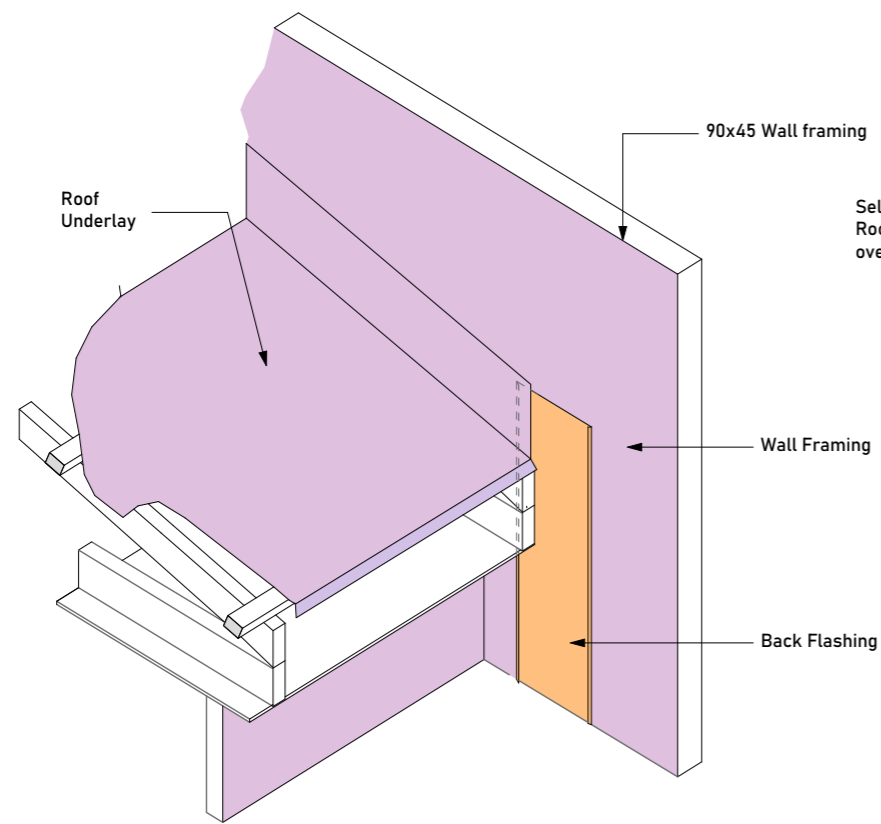




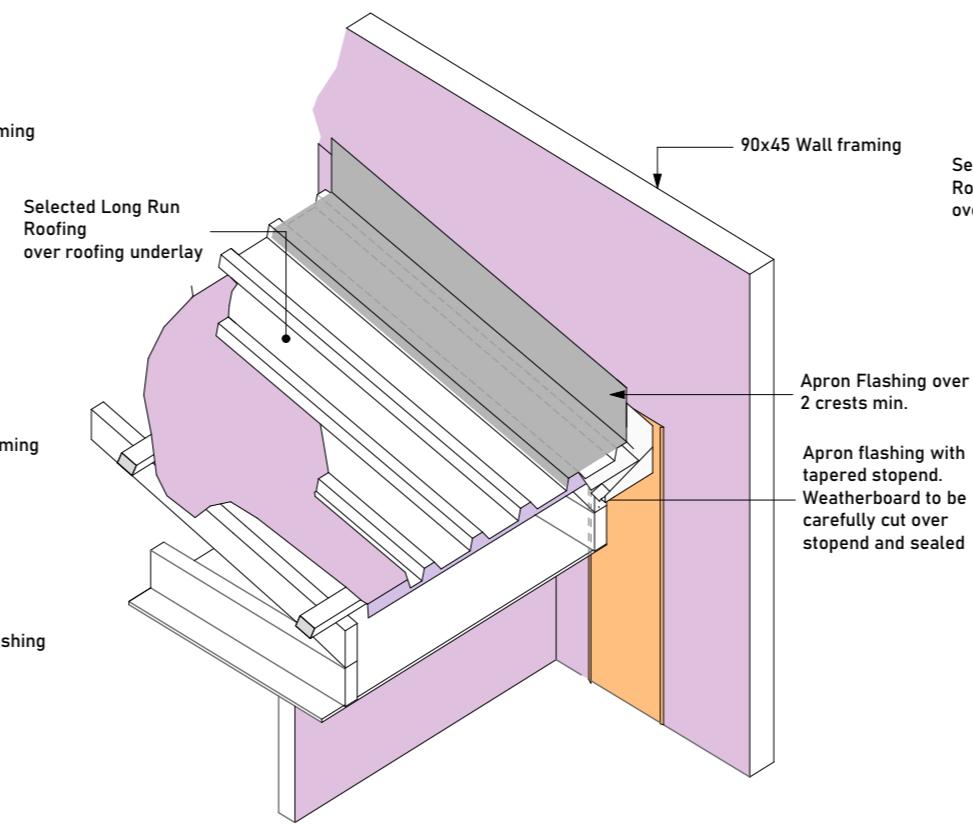




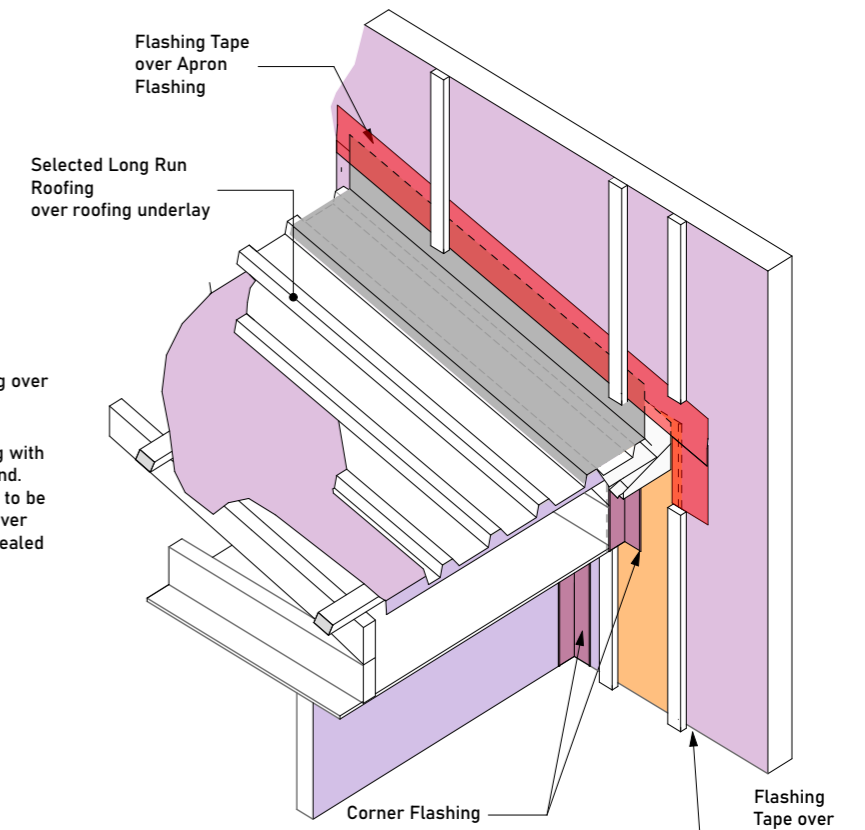




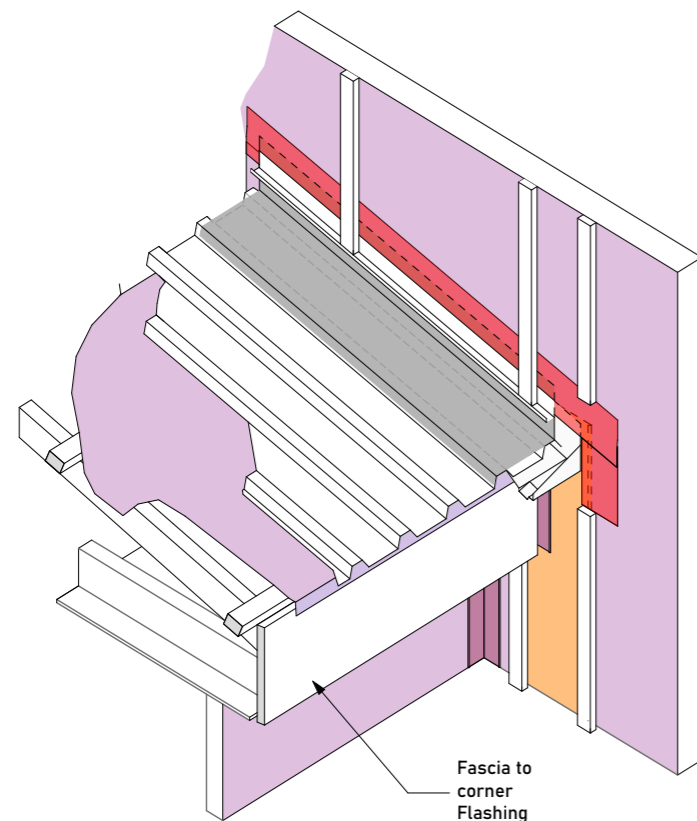
Step 1 - Back Flashing, Wall and Roof Underlay



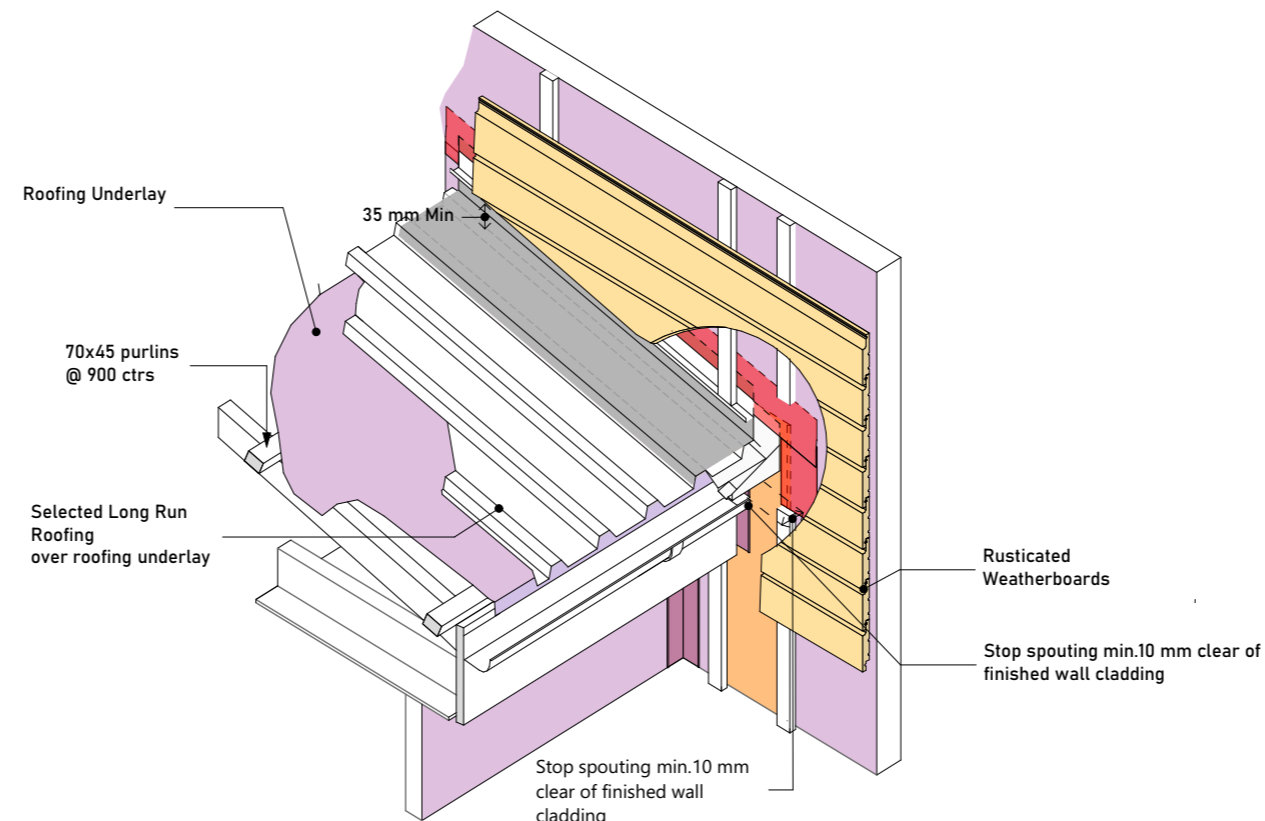
Step 2 - Apron Flashing and Kick out



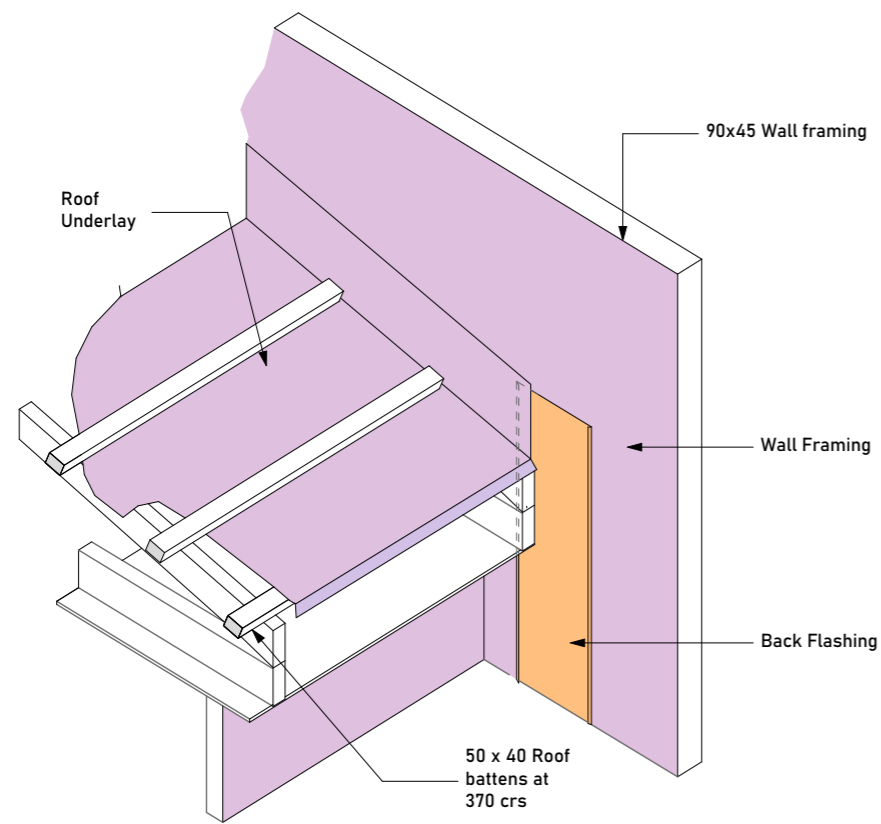
Step 3 - Overlap wall underlay from above, flashing tape and cavity battens



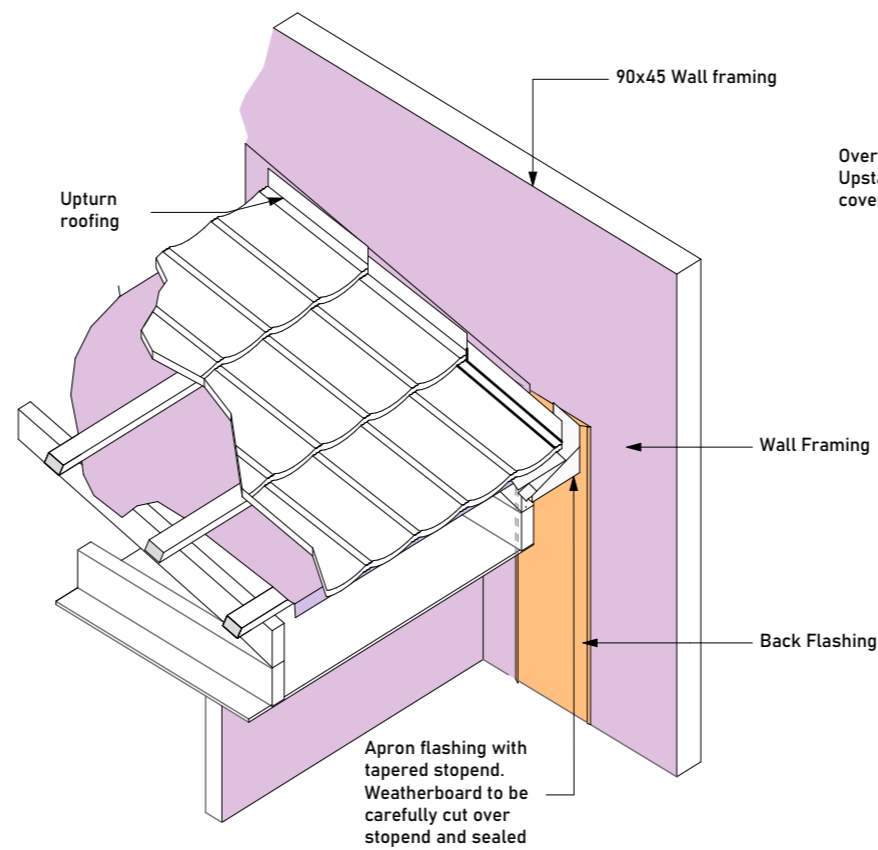
Step 4 - Cavity Closer



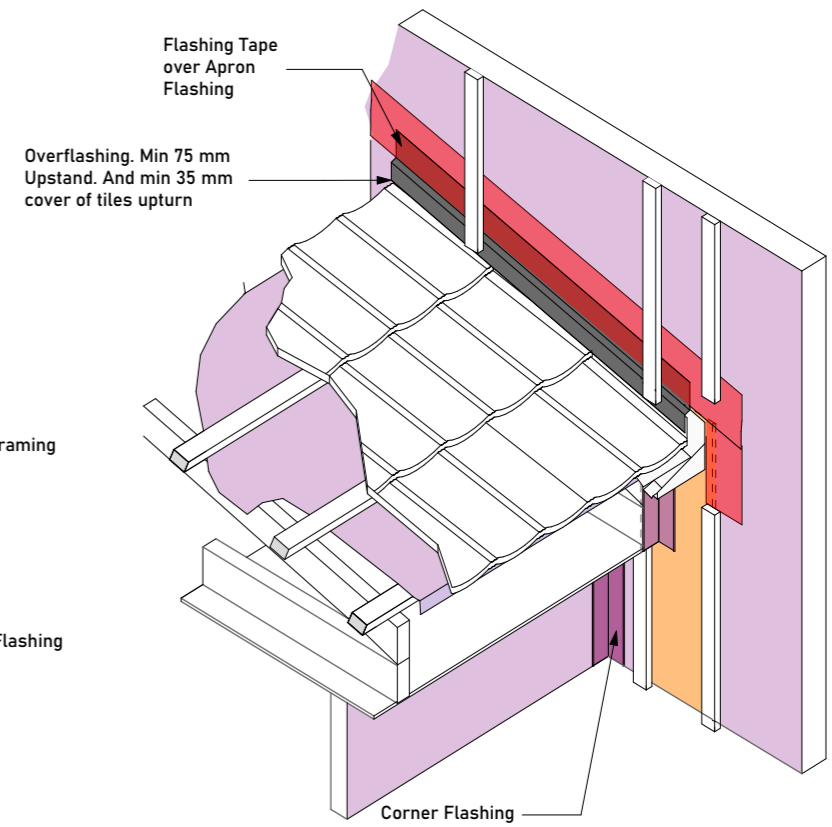
Step 5 - Cladding and Gutter



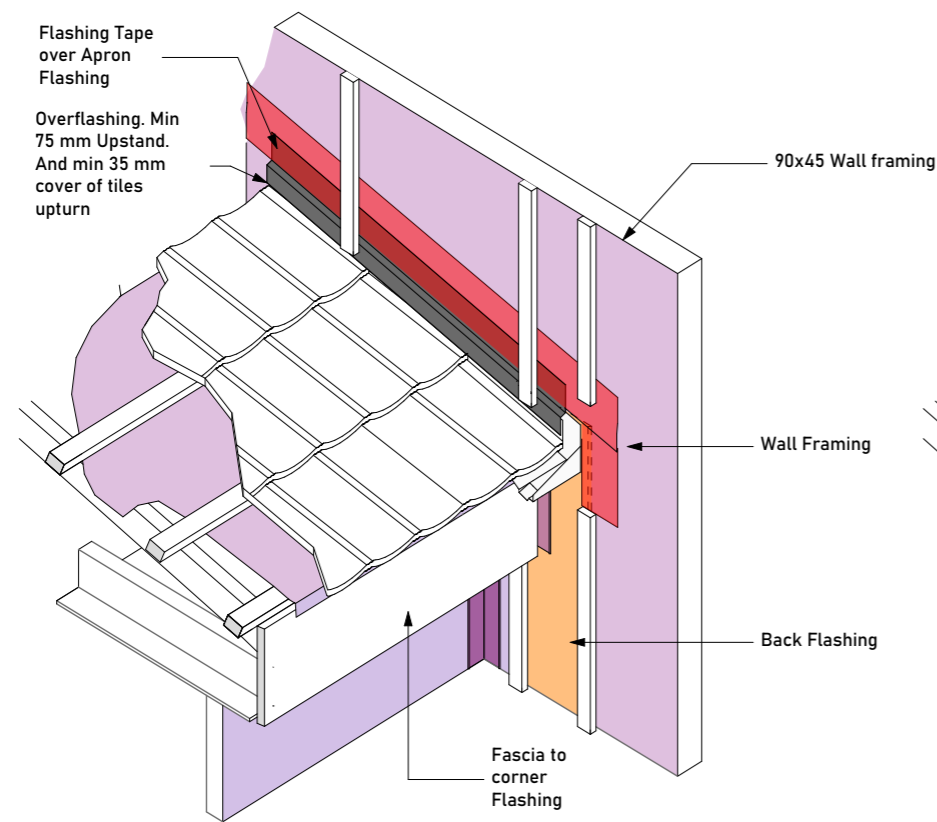
Step 1 - Back Flashing, Wall and Roof Underlay



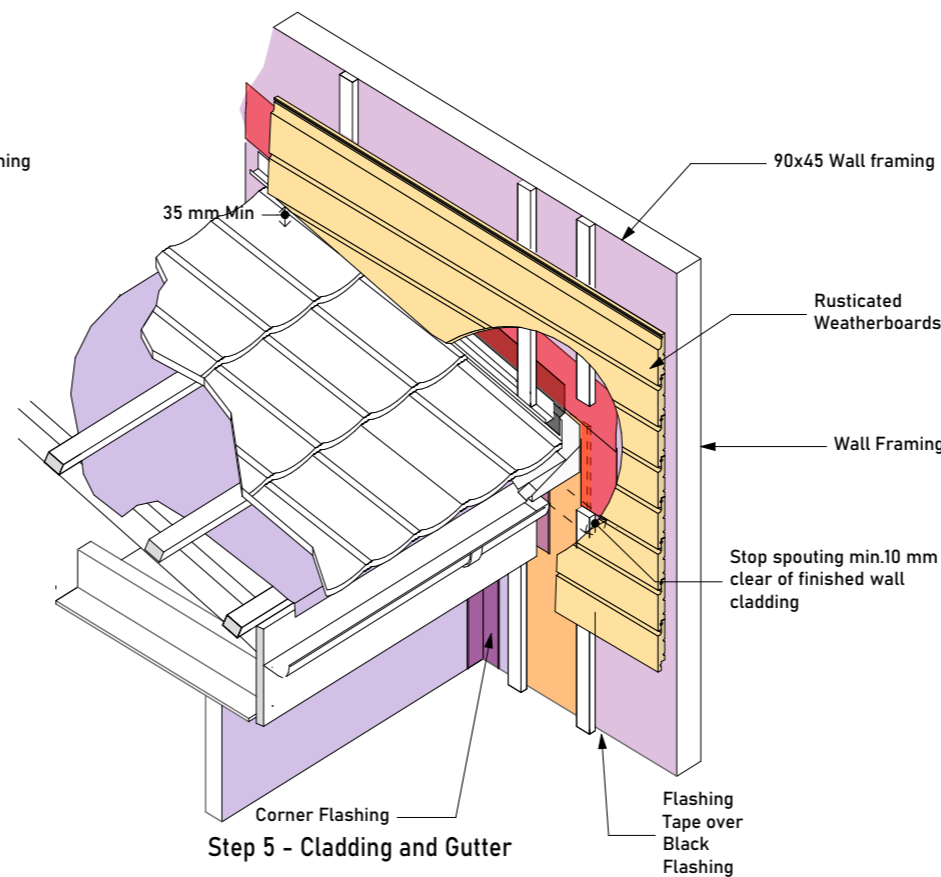
Step 2 - Apron Flashing and Kick out



Step 3 - Overlap wall underlay from above, flashing tape and cavity battens

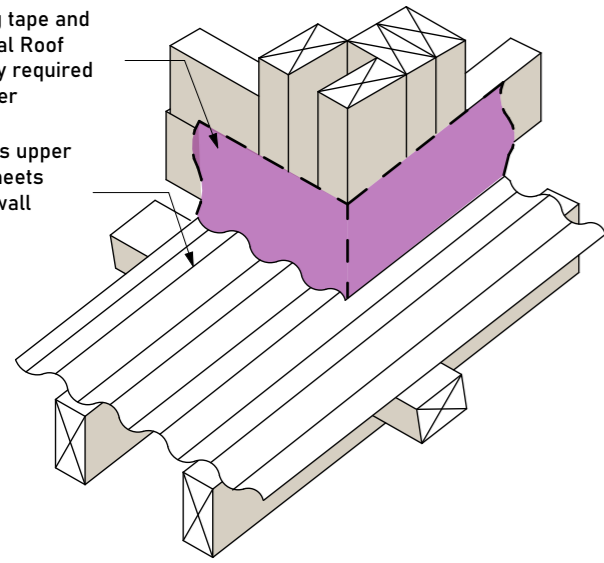


Step 4 - Cavity Closer

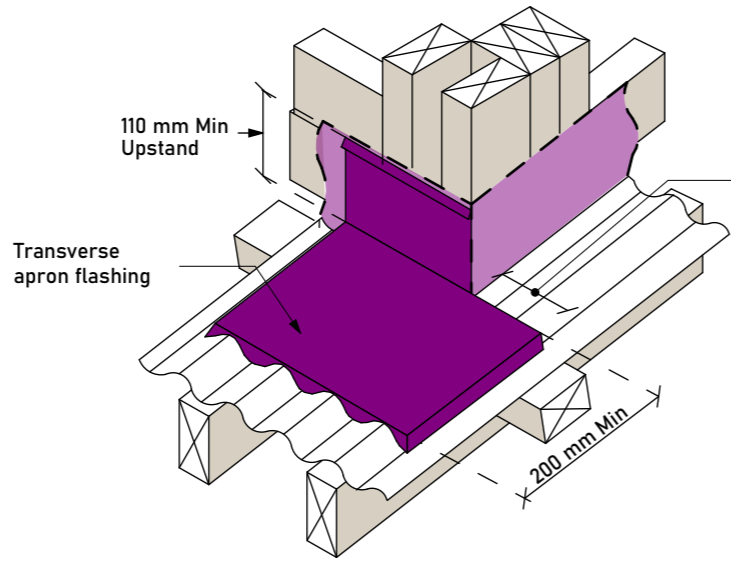


Step 5 - Cladding and Gutter

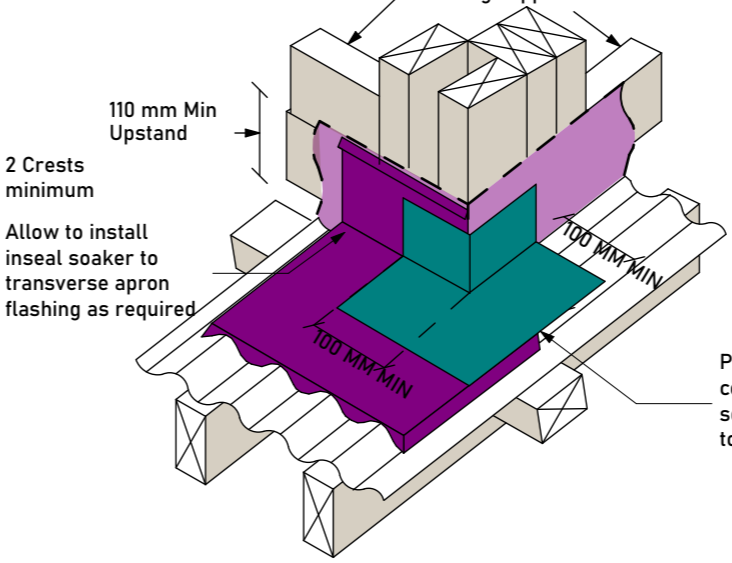
Flashing tape and additional Roof Underlay required for corner  
 Stop ends upper end of sheets abutting wall framing



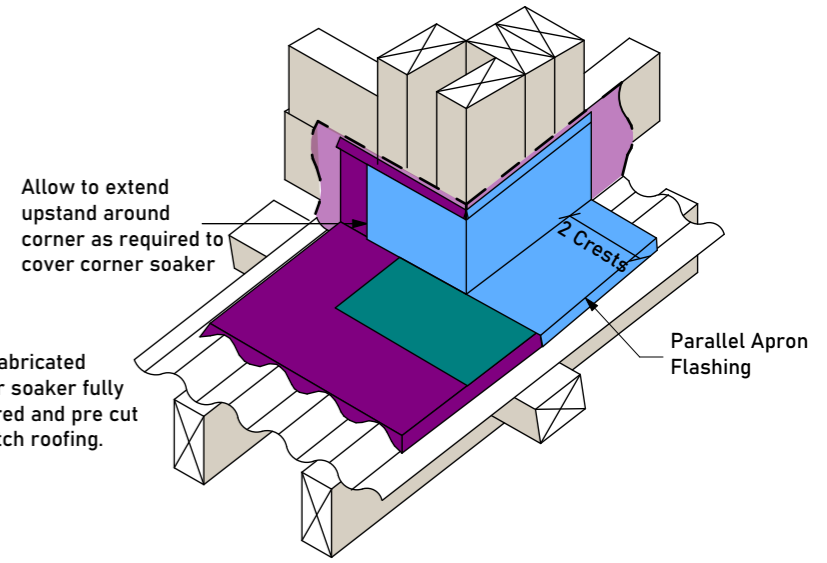
Step 1 - Roofing and Wall Underlay



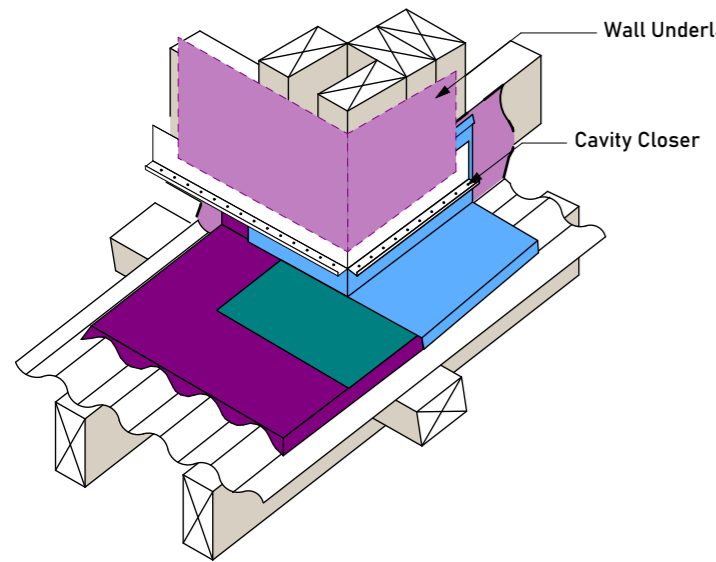
Step 2 - Transverse flashing



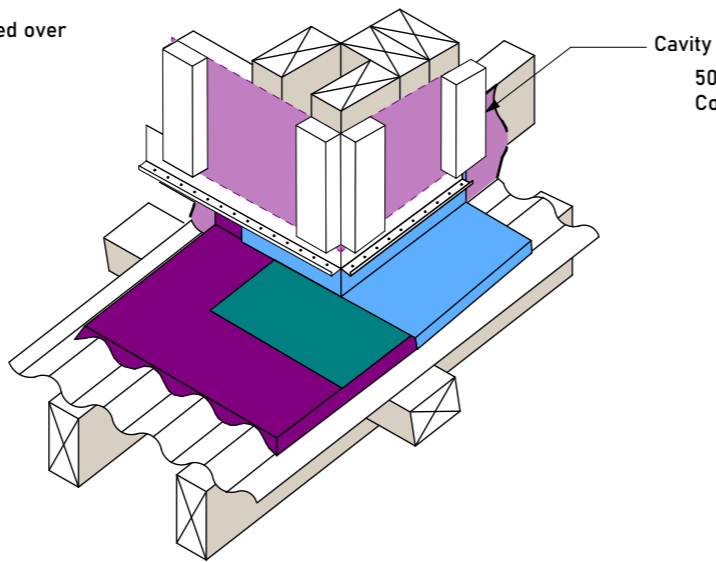
Step 3 - Corner Soaker



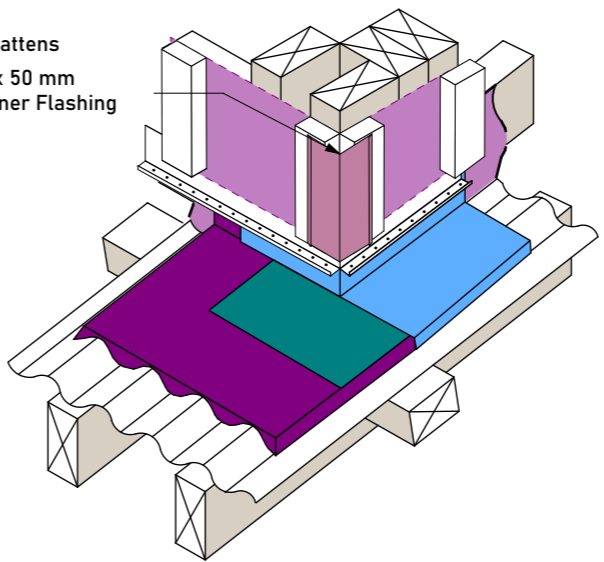
Step 4 - Parallel Apron Flashing



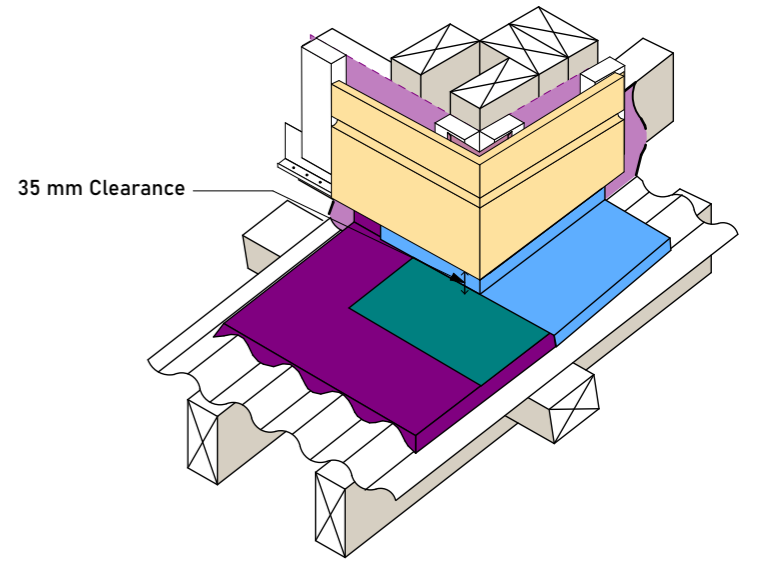
Step 5 - Wall Underlay and Cavity Closer



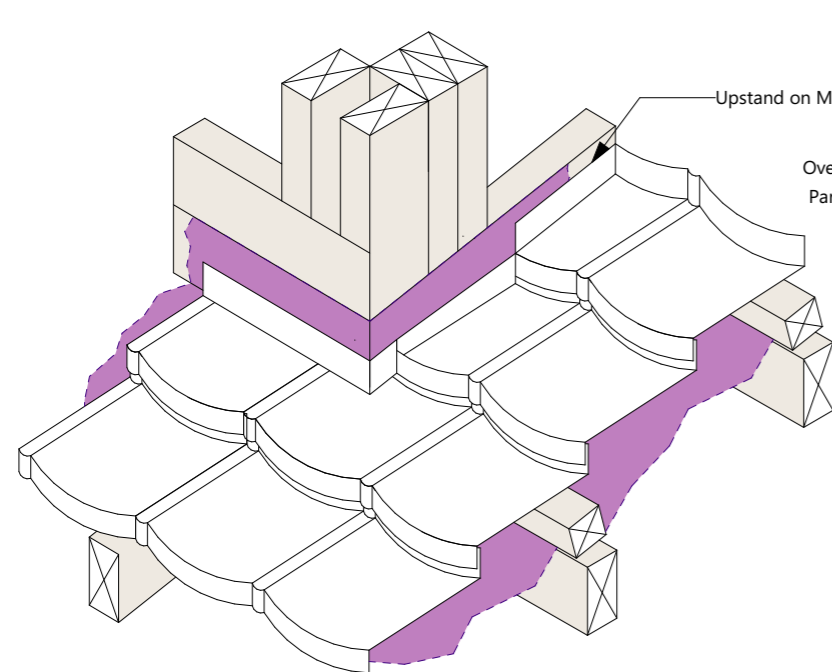
Step 6 - Cavity Battens



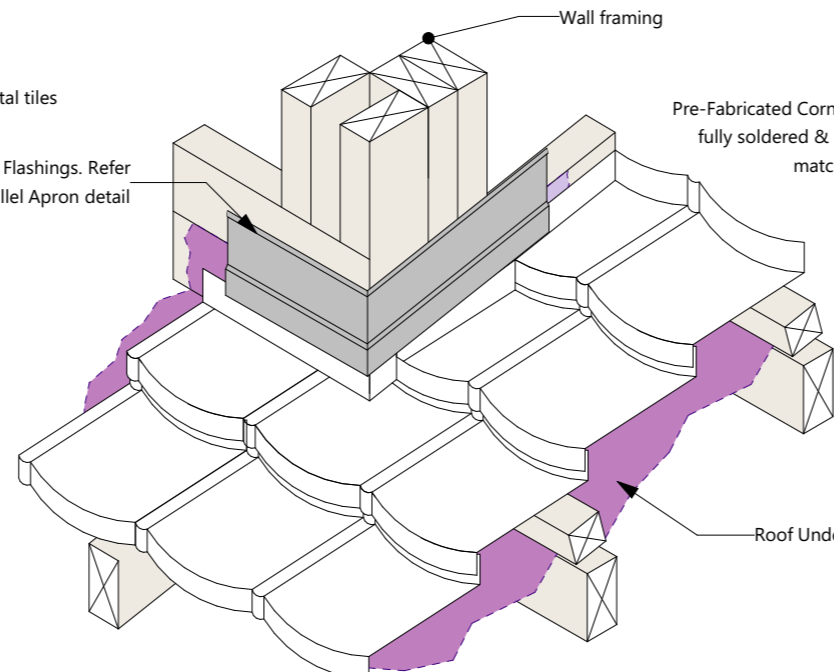
Step 7 - Corner Flashing



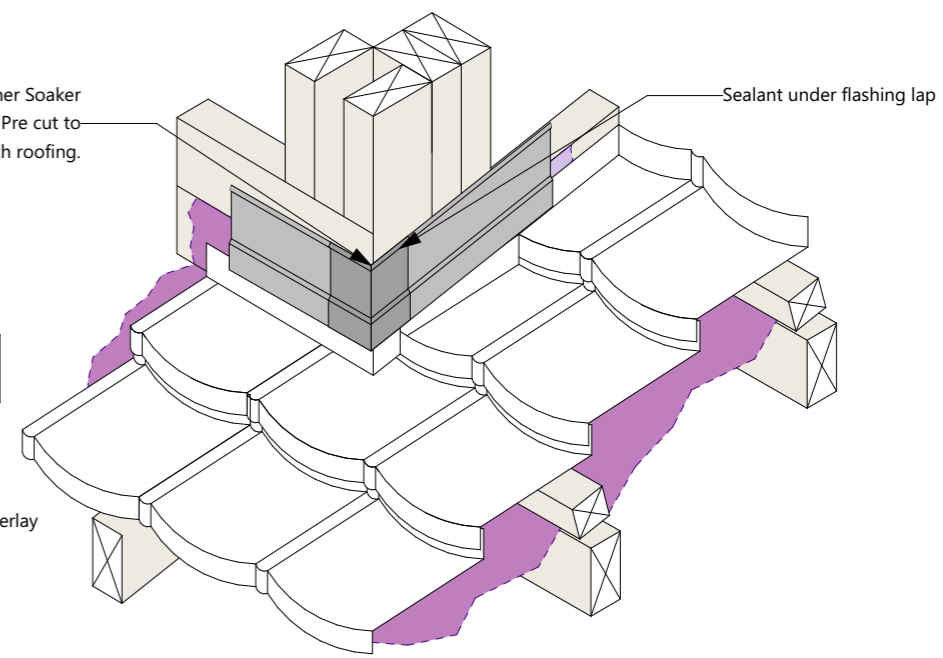
Step 8 - Cladding



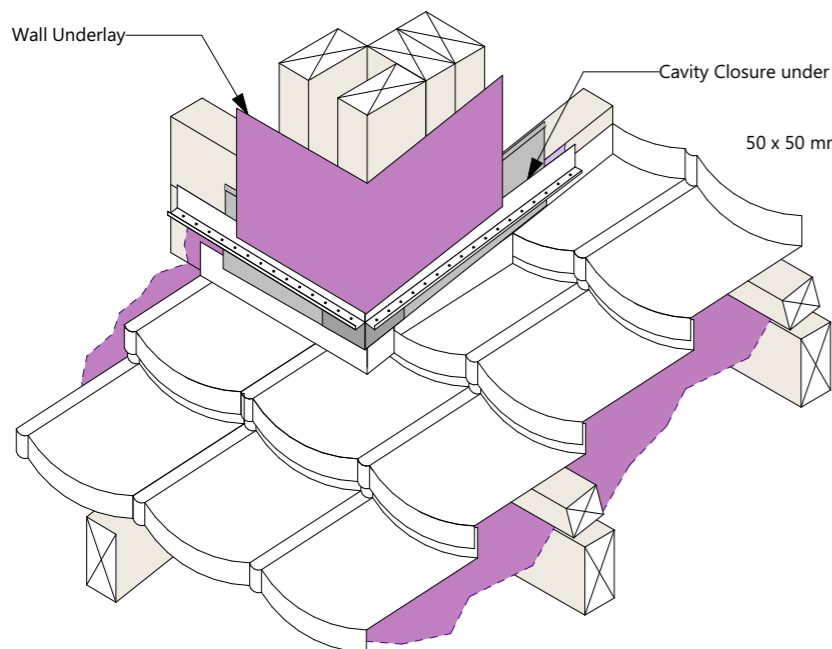
Step 1 - Roofing



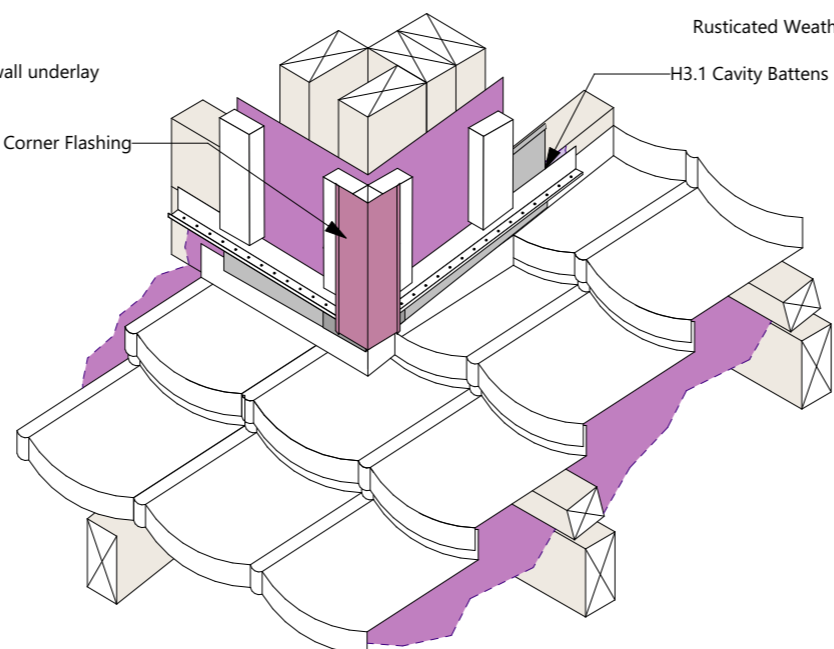
Step 2 - Over Flashings



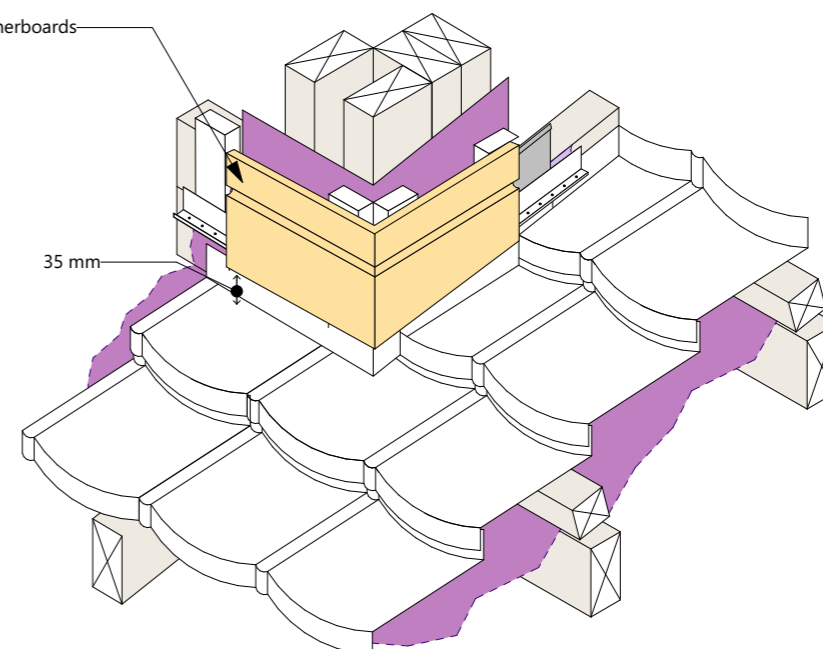
Step 3 - Corner Soaker



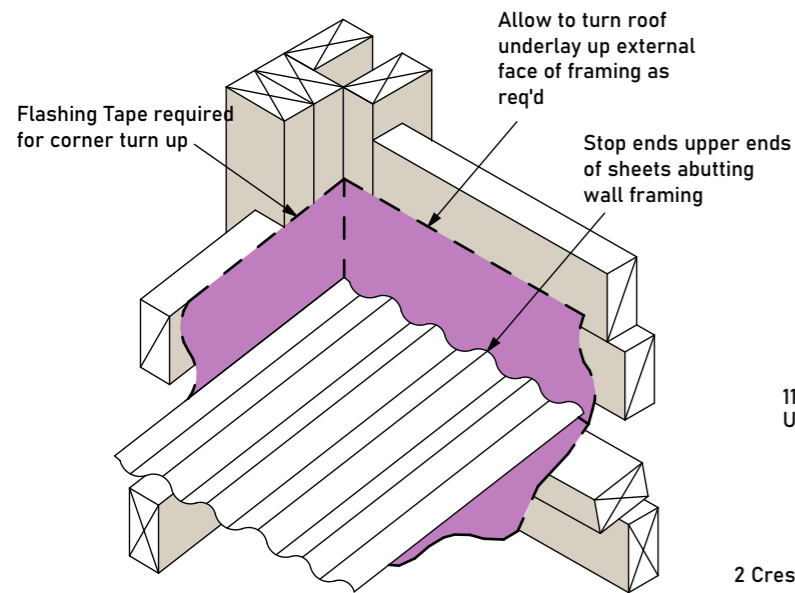
Step 4 - Cavity Closure and Wall Underlay



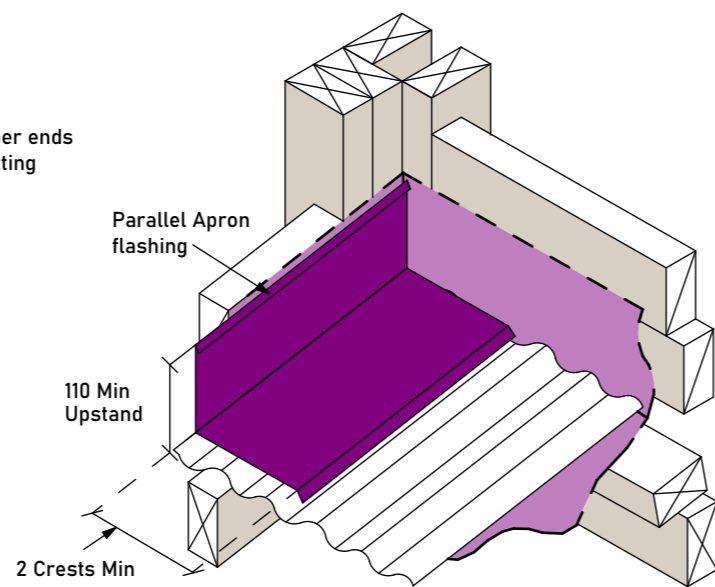
Step 5 - Cavity Battens



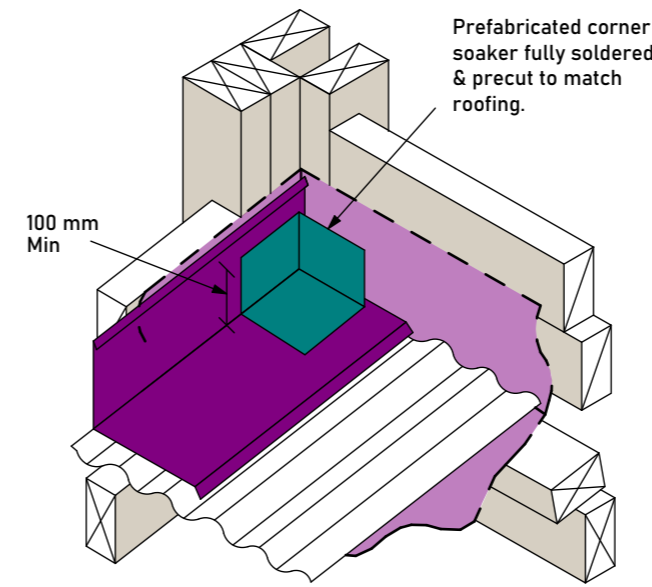
Step 6 - Cladding



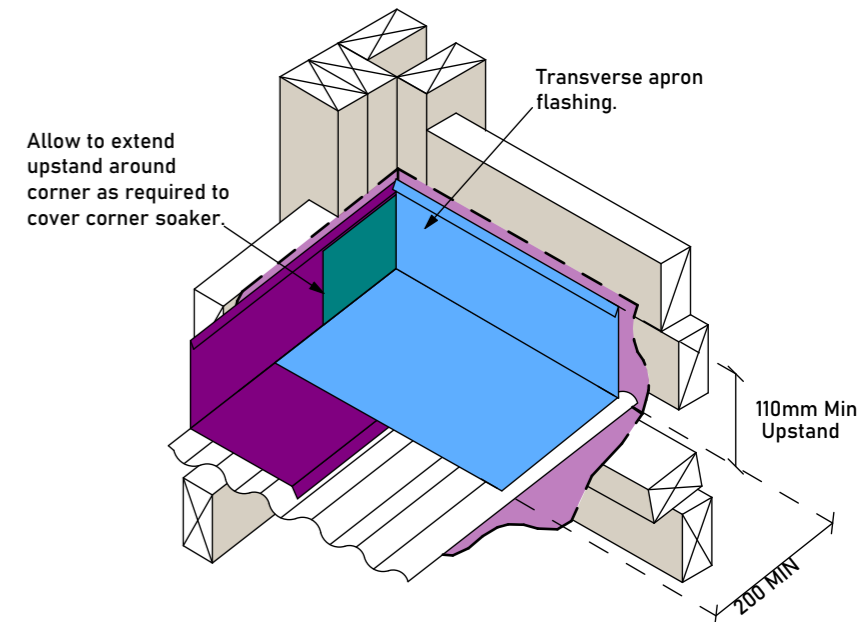
Step 1 - Roofing and Underlay



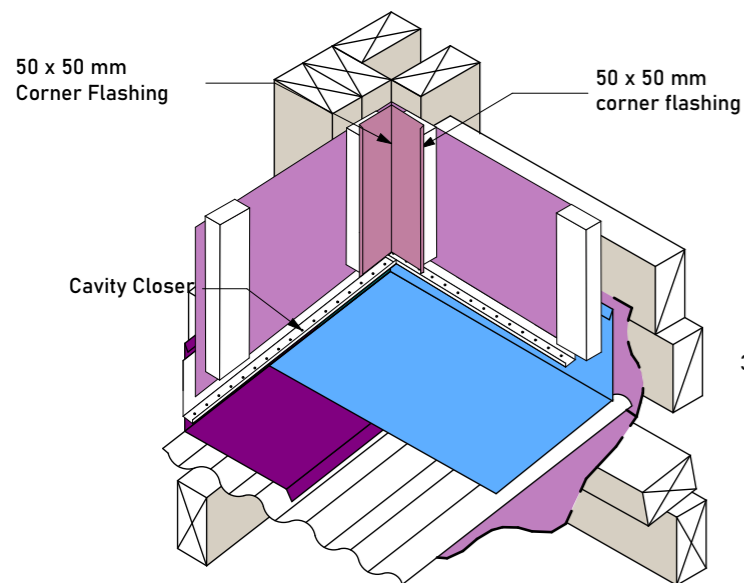
Step 2 - Transverse Flashing



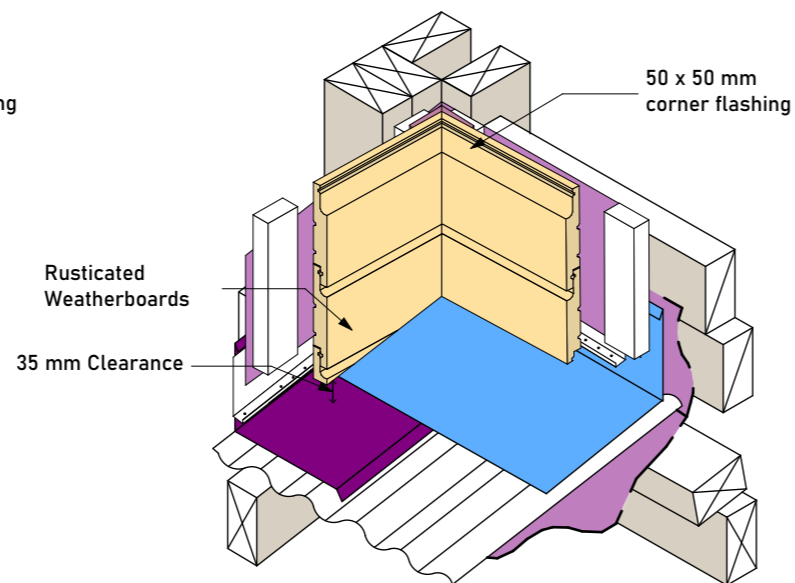
Step 3 - Transverse Apron Flashing



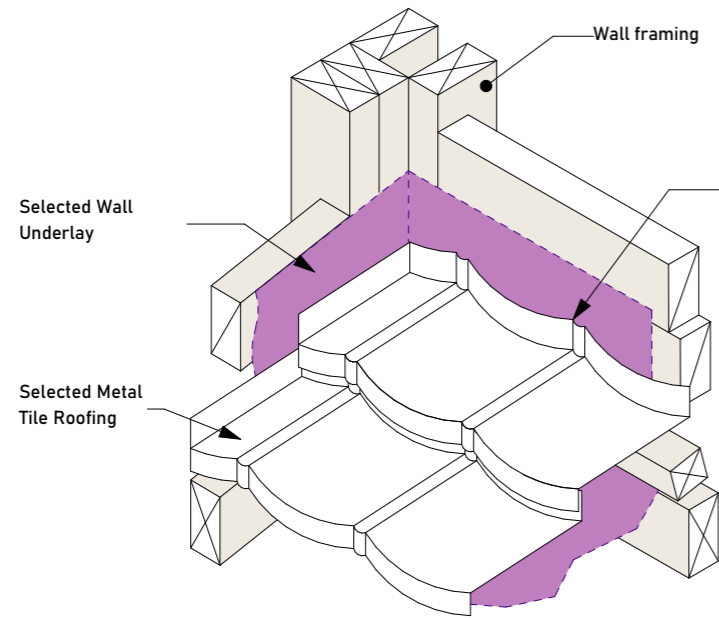
Step 4 - Parallel Apron Flashing



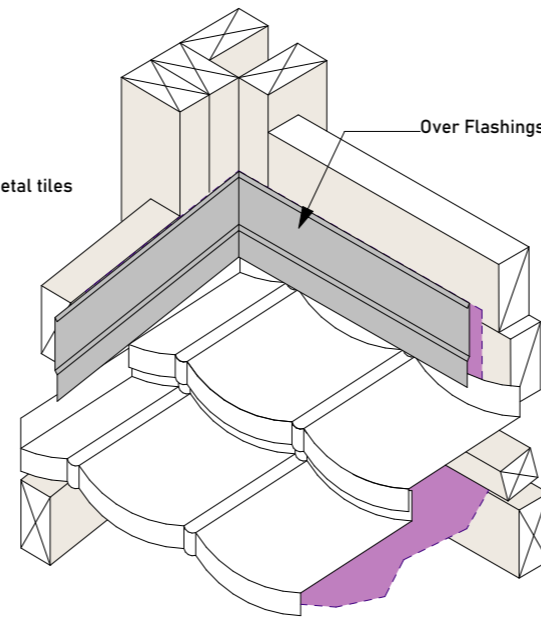
Step 5 - Cavity Closer, Cavity Battens and Corner Flashing



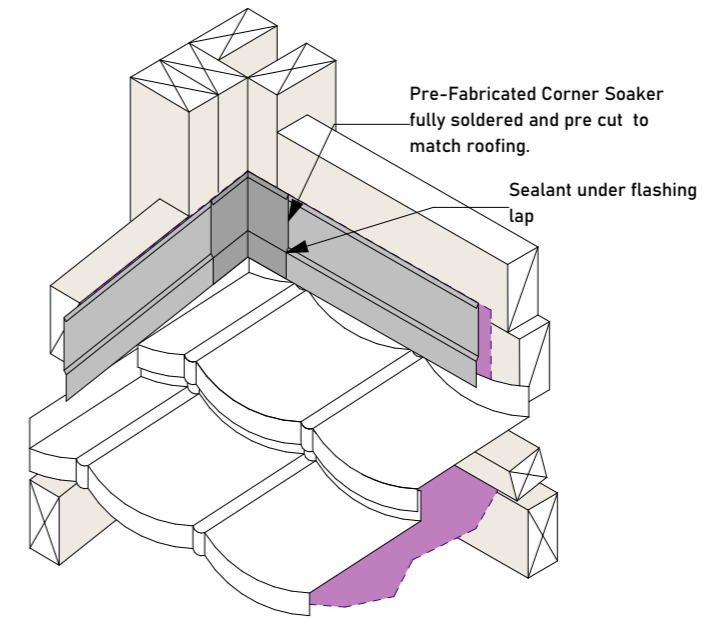
Step 6 - Cladding



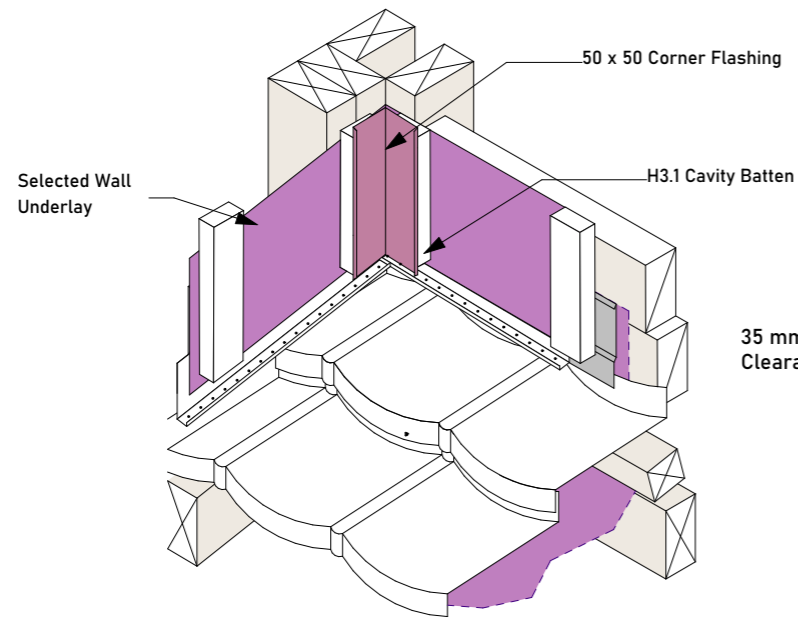
Step 1 - Roofing



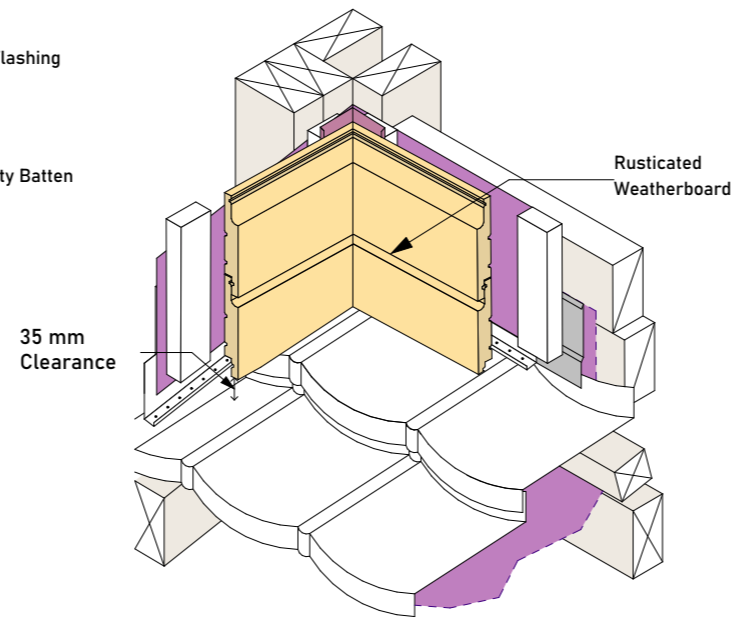
Step 2 - Over Flashings



Step 3 - Corner Soaker



Step 4 - Cavity Battens, Closure and Corner Flashing



Step 5 - Cladding



