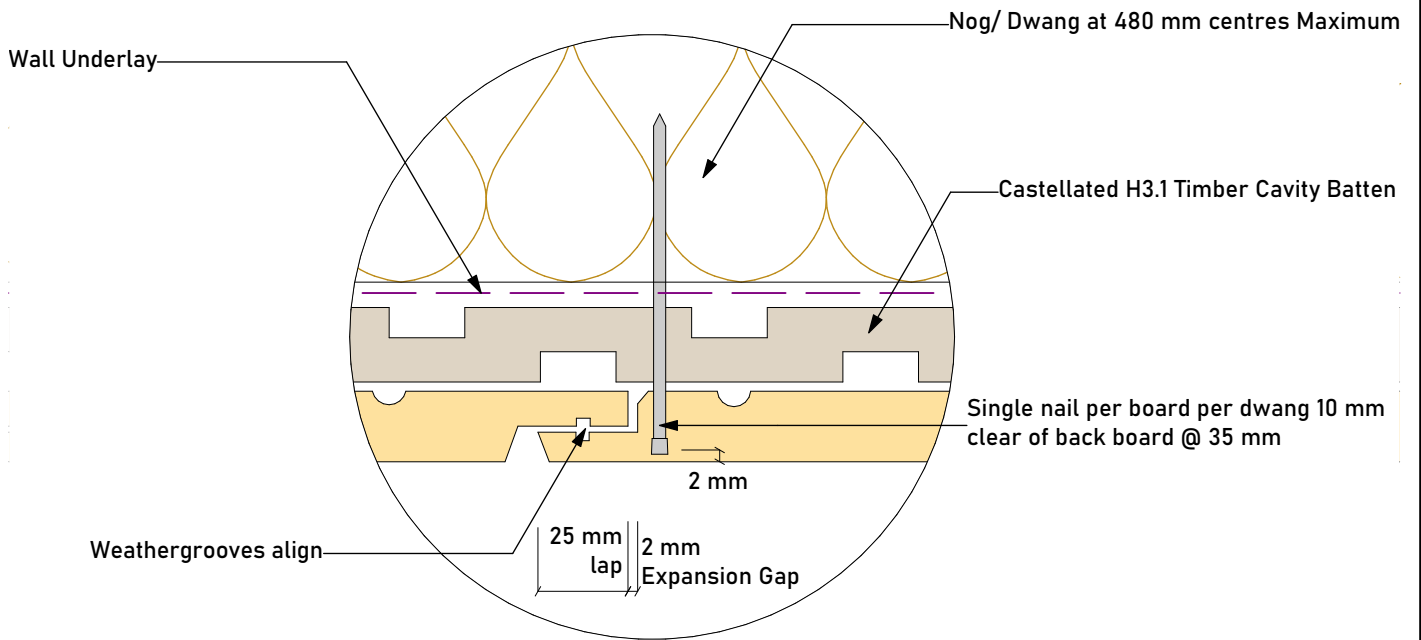
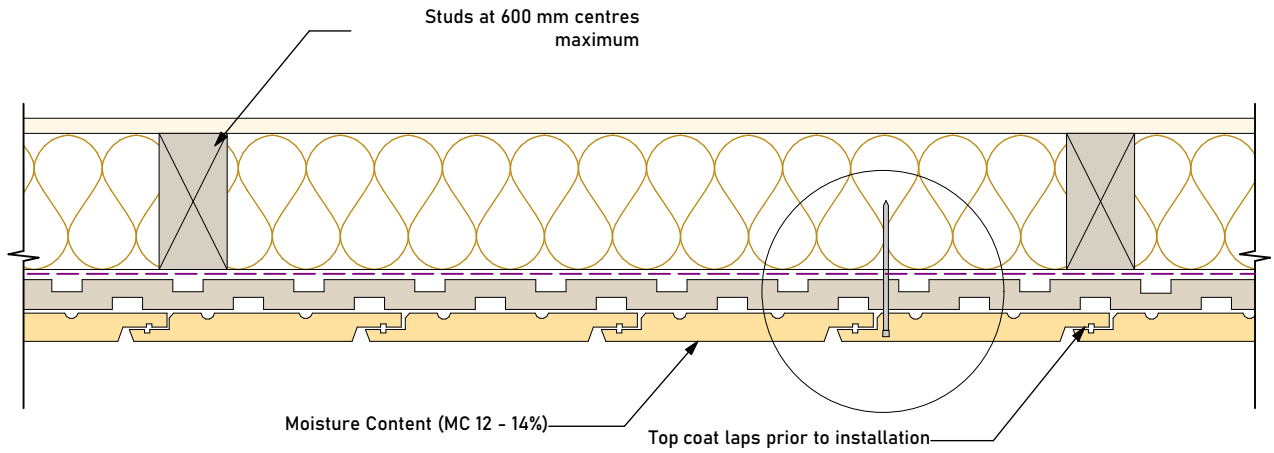
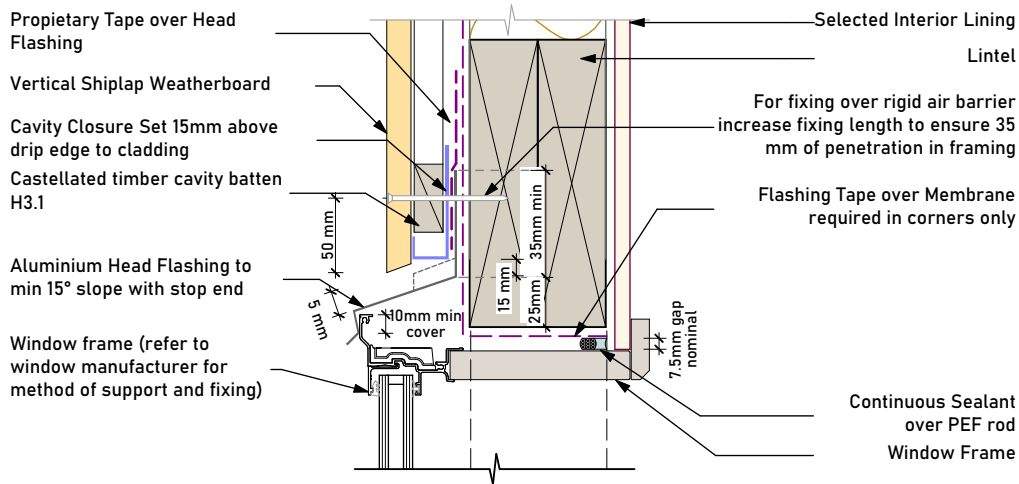


Sheet Index

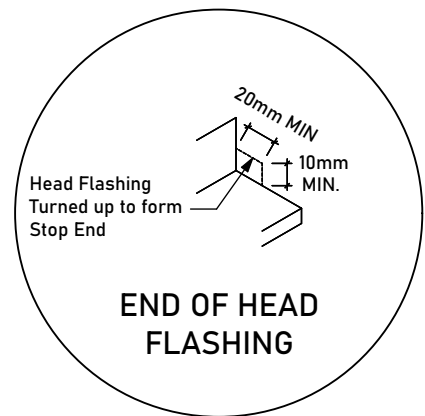
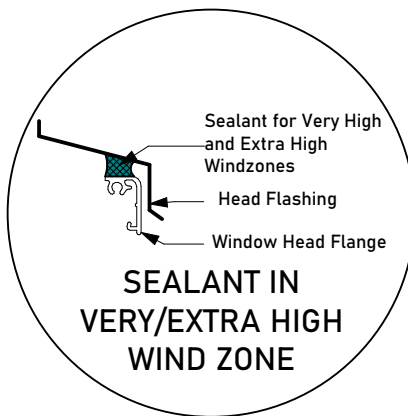
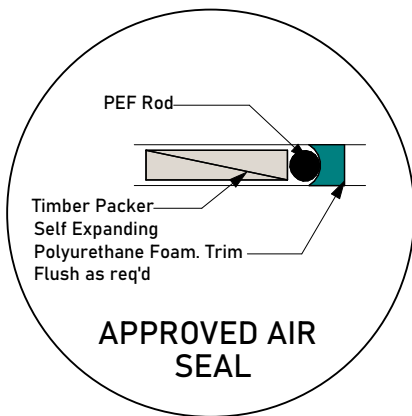
Layout ID	Layout Name	Scale
01	Index	
02	Shiplap Cavity Fix - Set out	1:5, 1:2
03	Shiplap Cavity Fix - Window Head	1:5
04	Shiplap Cavity Fix - 3D Window Head	1:5
05	Shiplap Cavity Fix - Window Jamb	1:5
06	Shiplap Cavity Fix - Window Sill	1:5
07	Shiplap Cavity Fix - 3D Window Sill	1:10
08	Shiplap Cavity Fix - Foundation Concrete	1:5
09	Shiplap Cavity Fix - Foundation Timber	1:5
10	Shiplap Cavity Fix - Door Sill	1:5
11	Shiplap Cavity Fix - Door Jamb	1:5
12	Shiplap Cavity Fix - Door Head	1:5
13	Shiplap Cavity Fix - Soffit	1:5
14	Shiplap Cavity Fix - External Corner x 2	1:5
15	Shiplap Cavity Fix - Internal Corner	1:5
16	Shiplap Cavity Fix - Meterbox Head	1:5
17	Shiplap Cavity Fix - Meterbox Sill	1:5
18	Shiplap Cavity Fix - Pipe Penetration	1:10, 1:5
19	Shiplap Cavity Fix - Fascia Eaves - No Soffit	1:5
20	Shiplap Cavity Fix - Apron 1 Metal Tiles	1:10
21	Shiplap Cavity Fix - Apron 2 Metal Tiles	1:10
22	Shiplap Cavity Fix - Apron Long Run	1:10
23	Shiplap Cavity Fix -Inter-Storey	1:5
24	Shiplap Cavity Fix - Parapet	1:5
25	Shiplap Cavity Fix - 3D Parapet 1	1:20, 1:10
26	Shiplap Cavity Fix - 3D Parapet 2	1:20, 1:10
27	Shiplap Cavity Fix - 3D Gutter to Wall Long Run	1:20
28	Shiplap Cavity Fix - 3D Gutter to Wall Metal Tile	1:20
29	Shiplap Cavity Fix - 3D Apron (External Corner) - Long Run	1:10
30	Shiplap Cavity Fix - 3D Apron (External Corner) - Metal Tiles	1:10
31	Shiplap Cavity Fix - 3D Apron (Internal Corner) - Long Run	1:10
32	Shiplap Cavity Fix 3D Apron (Internal Corner) - Metal Tiles	1:10
33	Shiplap Cavity Fix - Vertical to Horizontal Junction	1:5

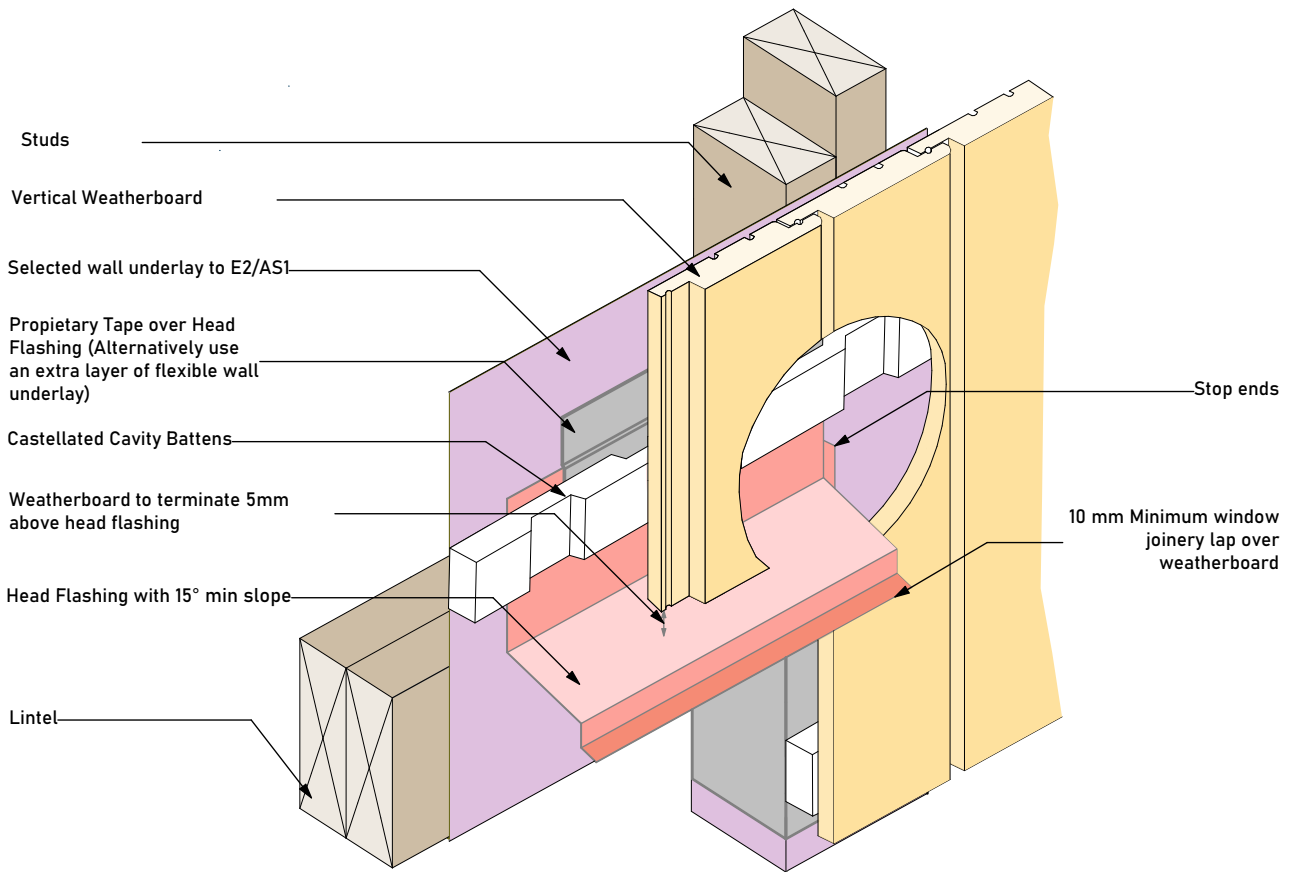


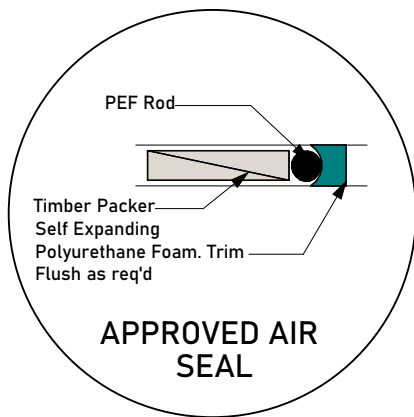
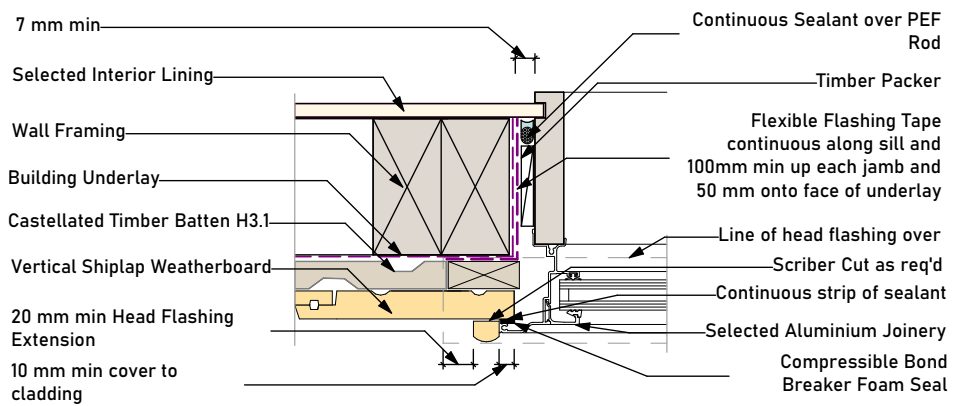


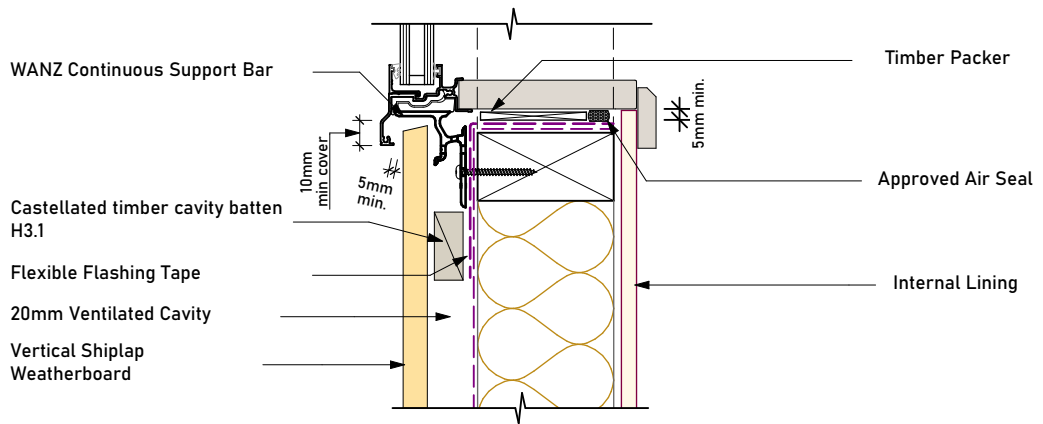
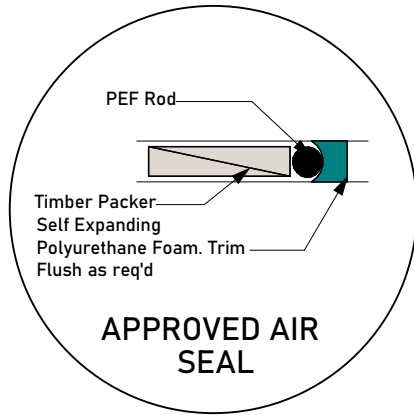
NOTES:

1. Flashing materials must be selected based on exposure zone, refer to NZS:3604 and table 20 NZBC E2/AS1.
2. Flashing tape must be compatible with the selected underlay.
3. Flexible underlay to comply with acceptable solution E2/AS1.
4. When Rigid air barriers are used flashing tape to be applied to the entire window opening.



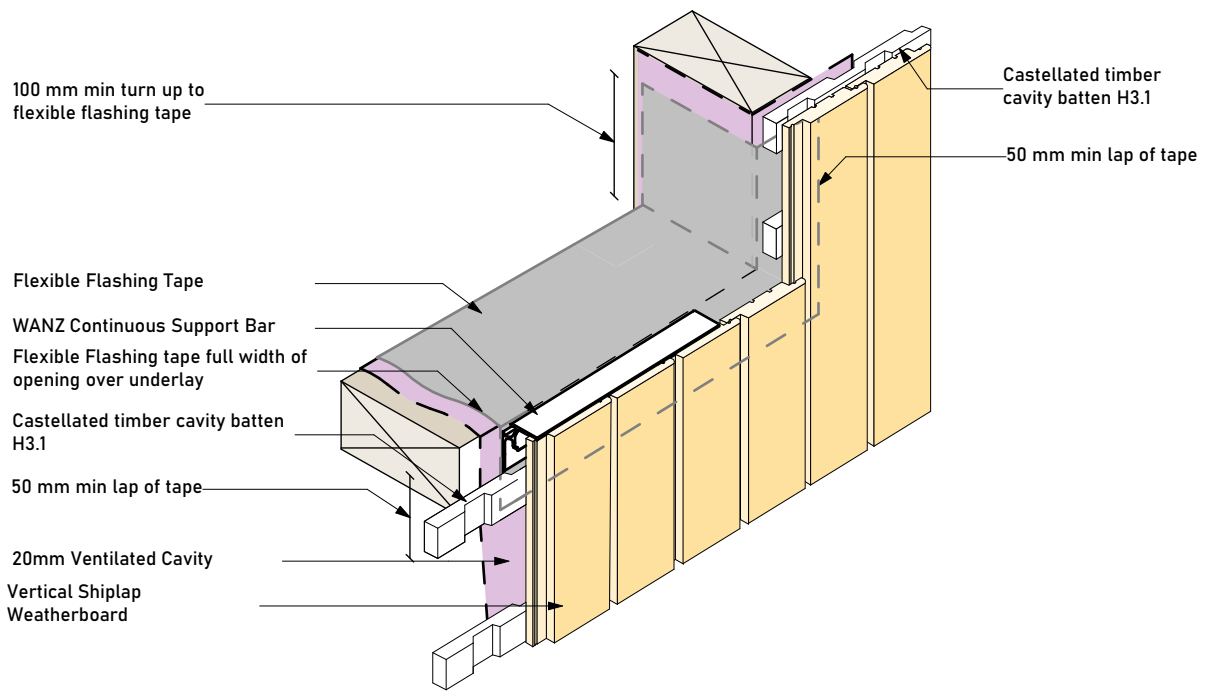






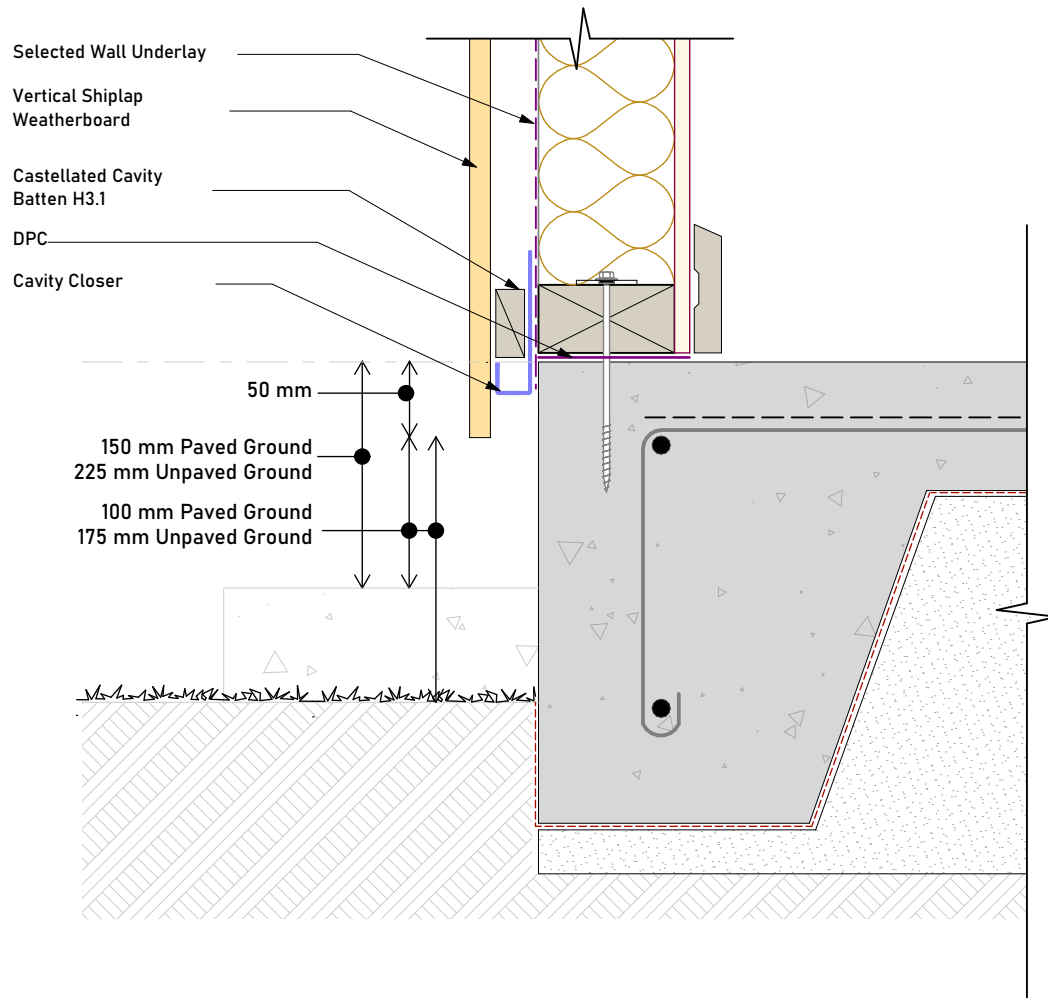
NOTES:

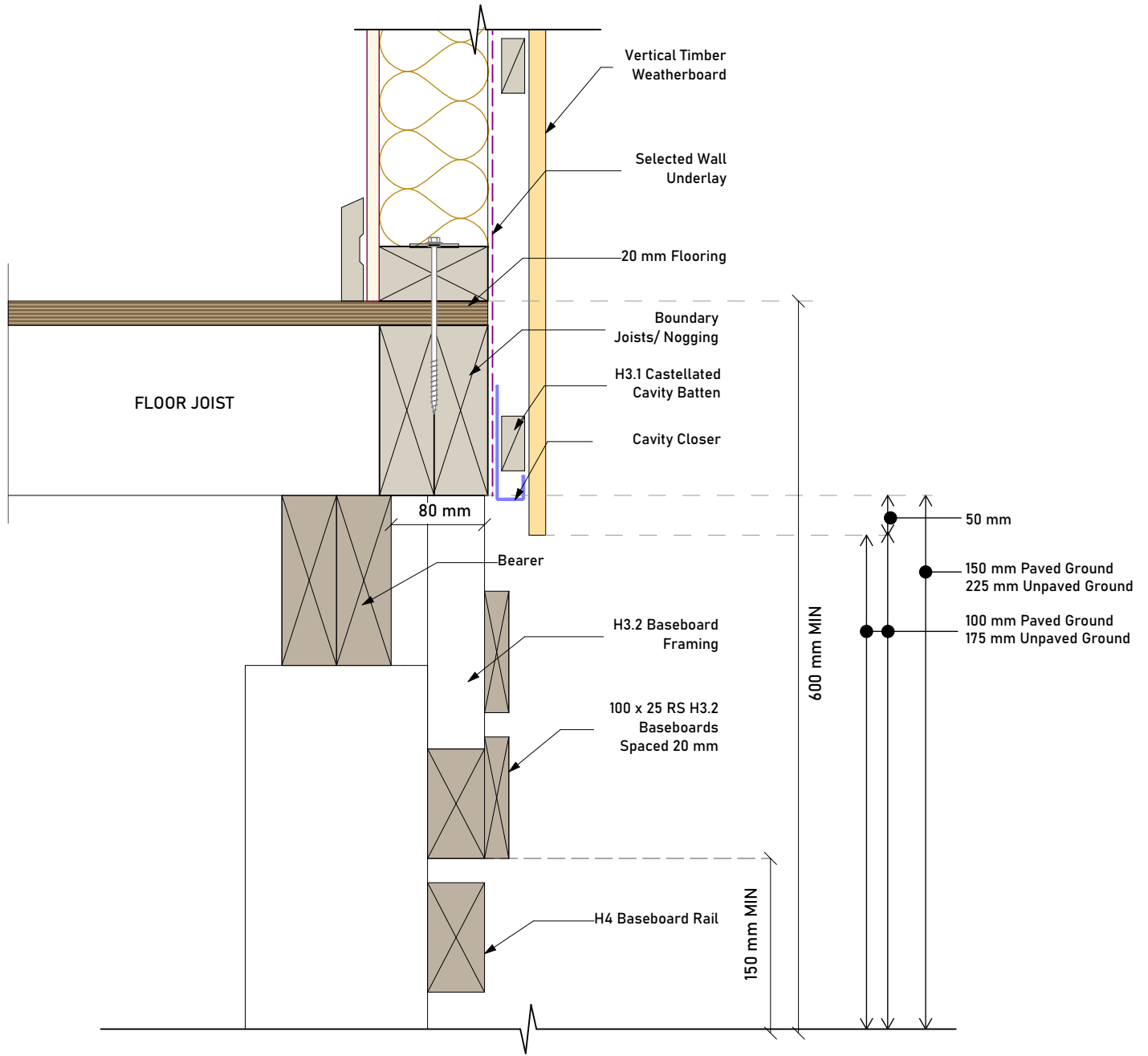
1. Flashing materials must be selected based on exposure zone, refer to NZS:3604 and table 20 NZBC E2/AS1.
2. Flashing tape must be compatible with the selected underlay.
3. Flexible underlay to comply with acceptable solution E2/AS1.
4. When Rigid air barriers are used flashing tape to be applied to the entire window opening.

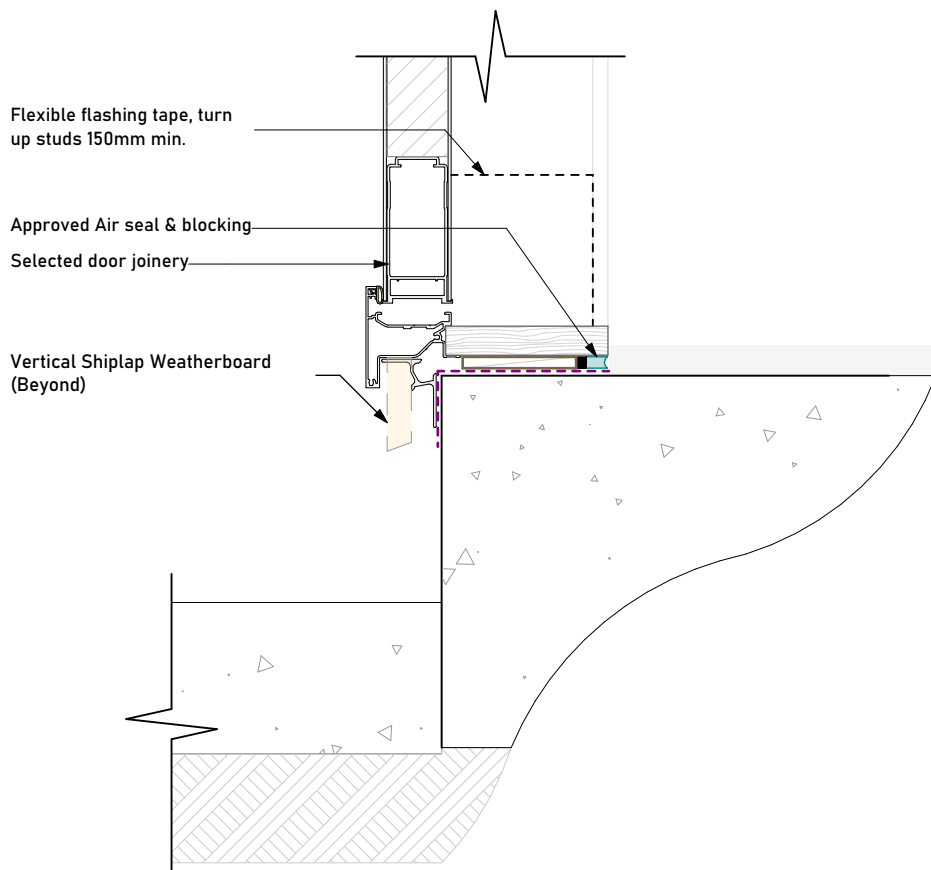


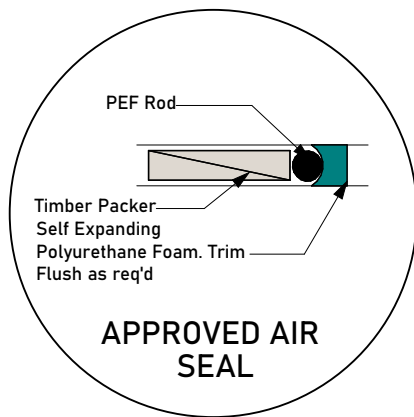
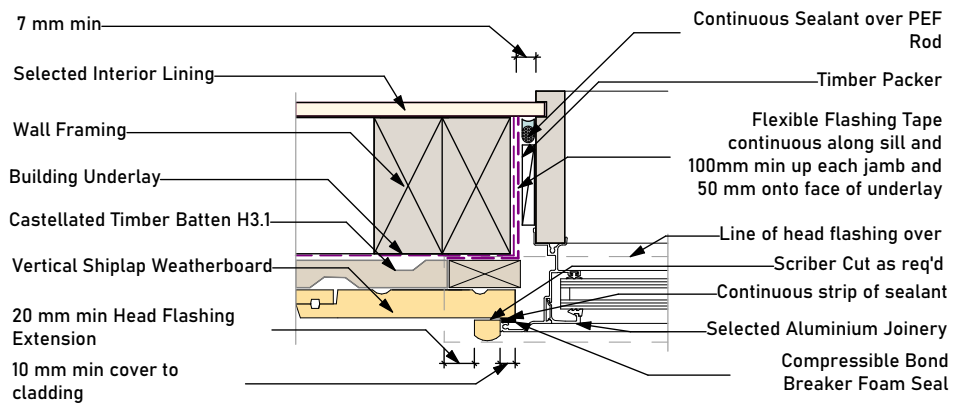
NOTES:

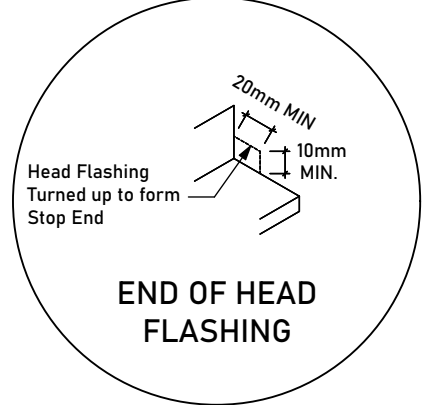
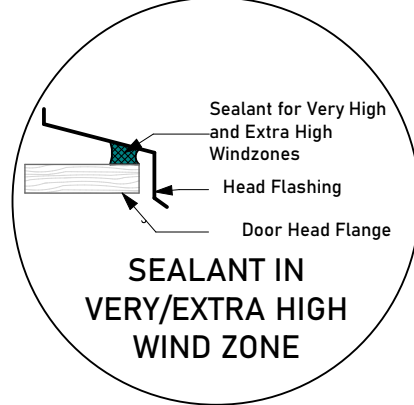
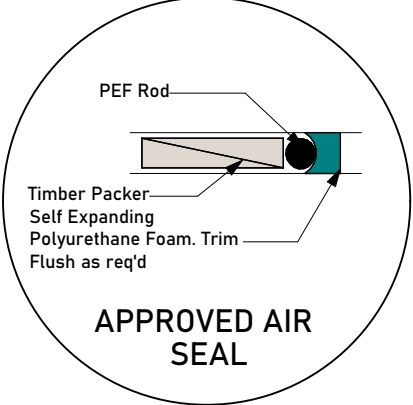
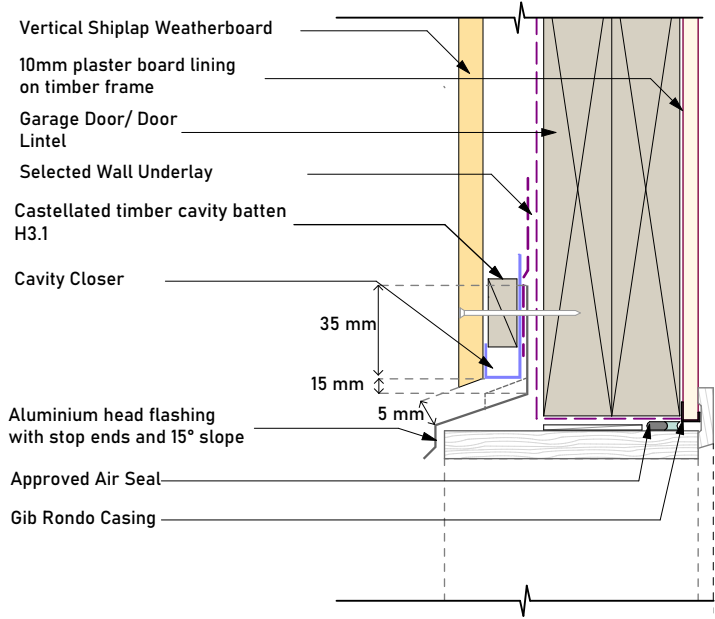
1. Flashing materials must be selected based on exposure zone, refer to NZS:3604 and table 20 NZBC E2/AS1.
2. Flashing tape must be compatible with the selected underlay.
3. Flexible underlay to comply with acceptable solution E2/AS1.
4. When Rigid air barriers are used flashing tape to be applied to the entire window opening.

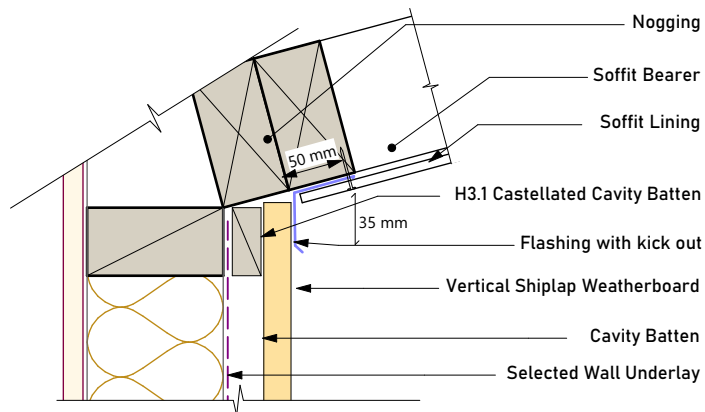
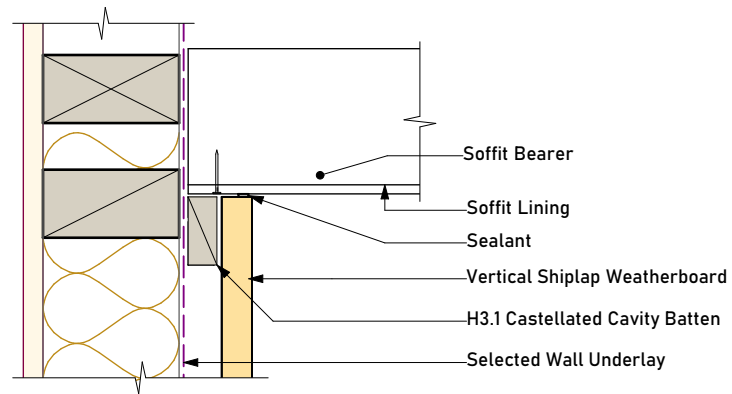


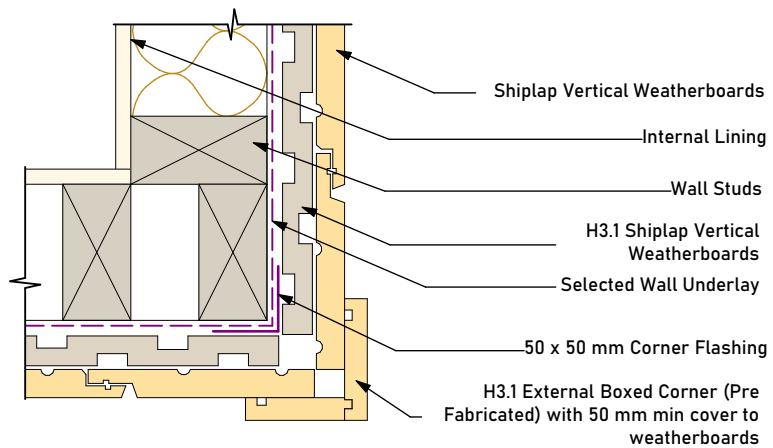
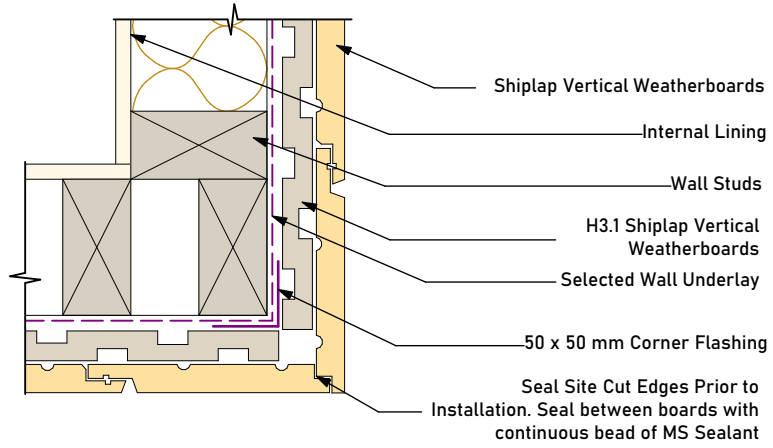


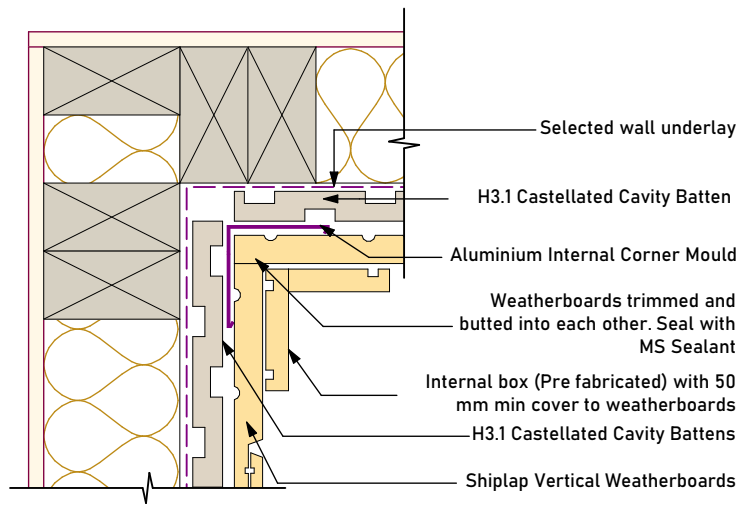
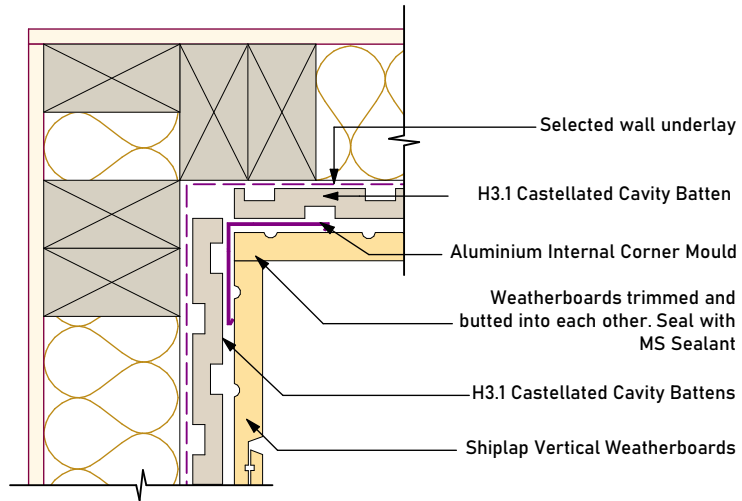


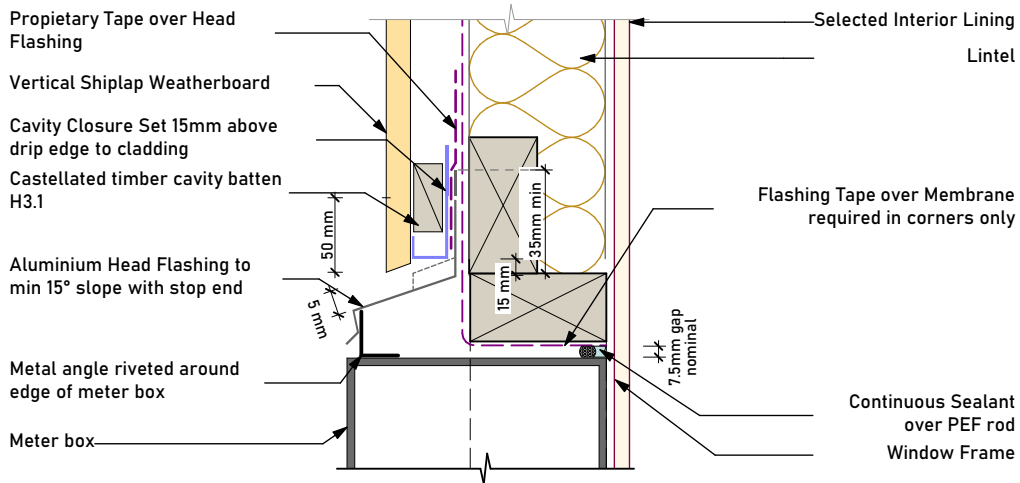






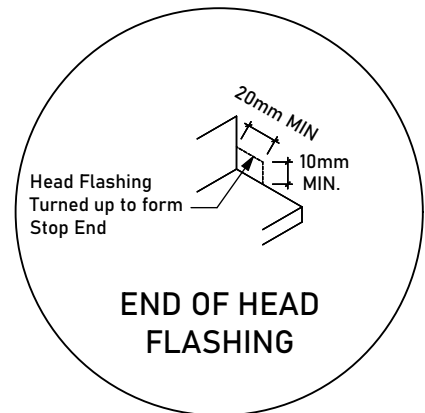
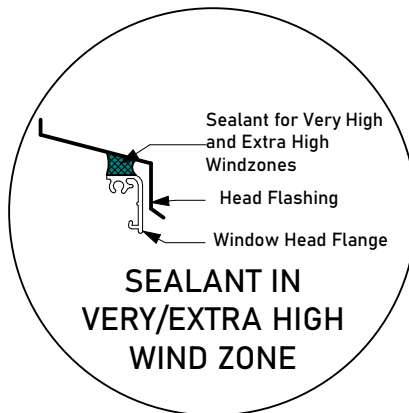
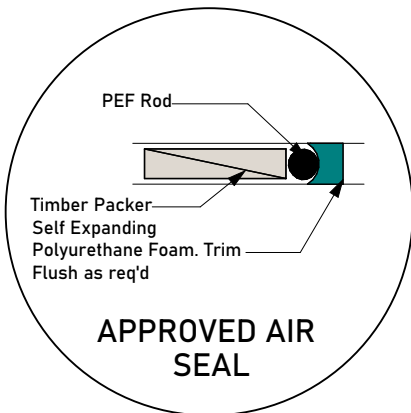


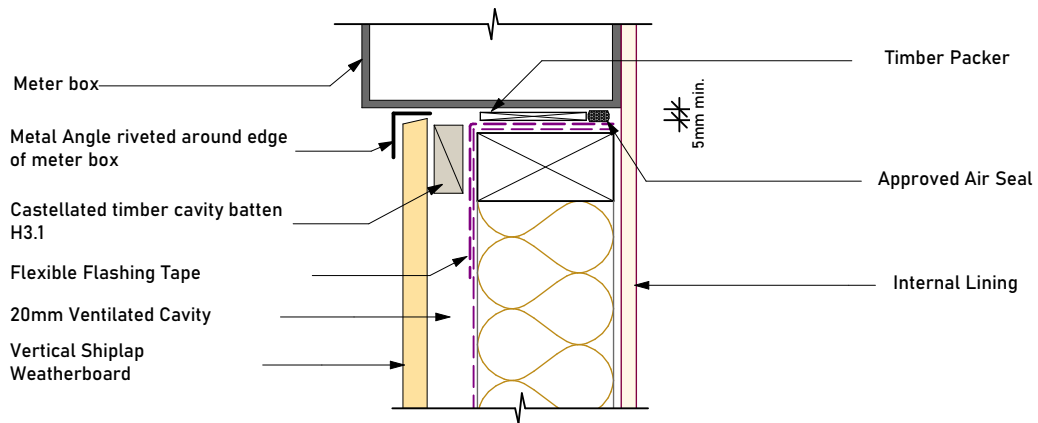
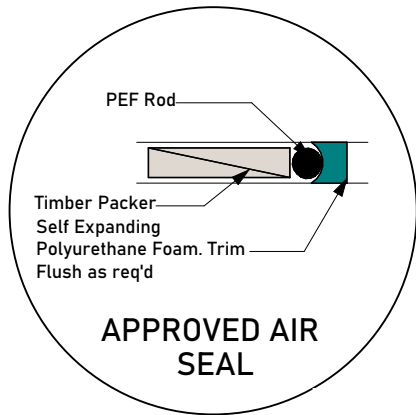




NOTES:

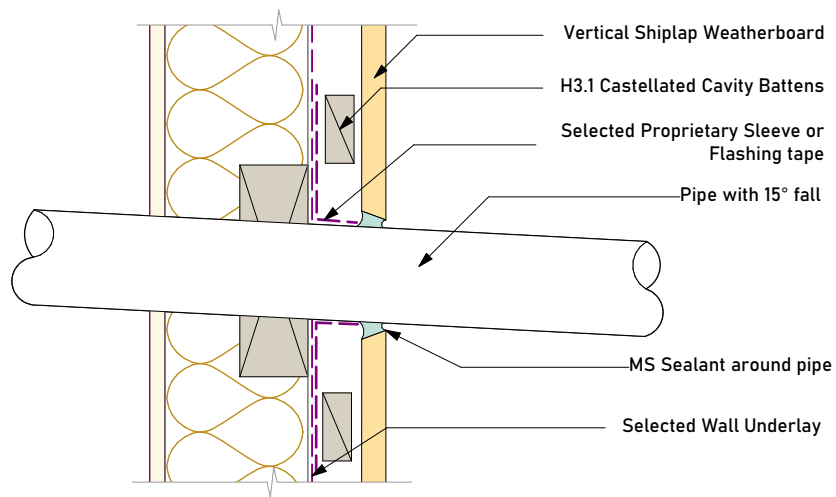
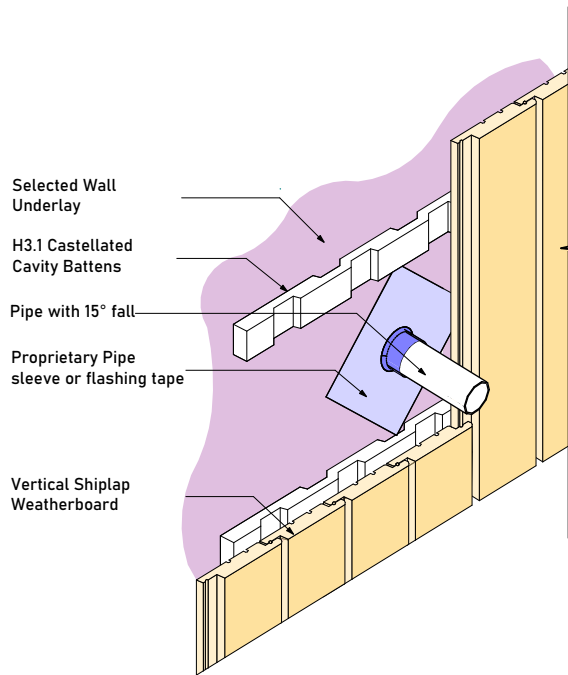
1. Flashing materials must be selected based on exposure zone, refer to NZS:3604 and table 20 NZBC E2/AS1.
2. Flashing tape must be compatible with the selected underlay.
3. Flexible underlay to comply with acceptable solution E2/AS1.
4. When Rigid air barriers are used flashing tape to be applied to the entire window opening.

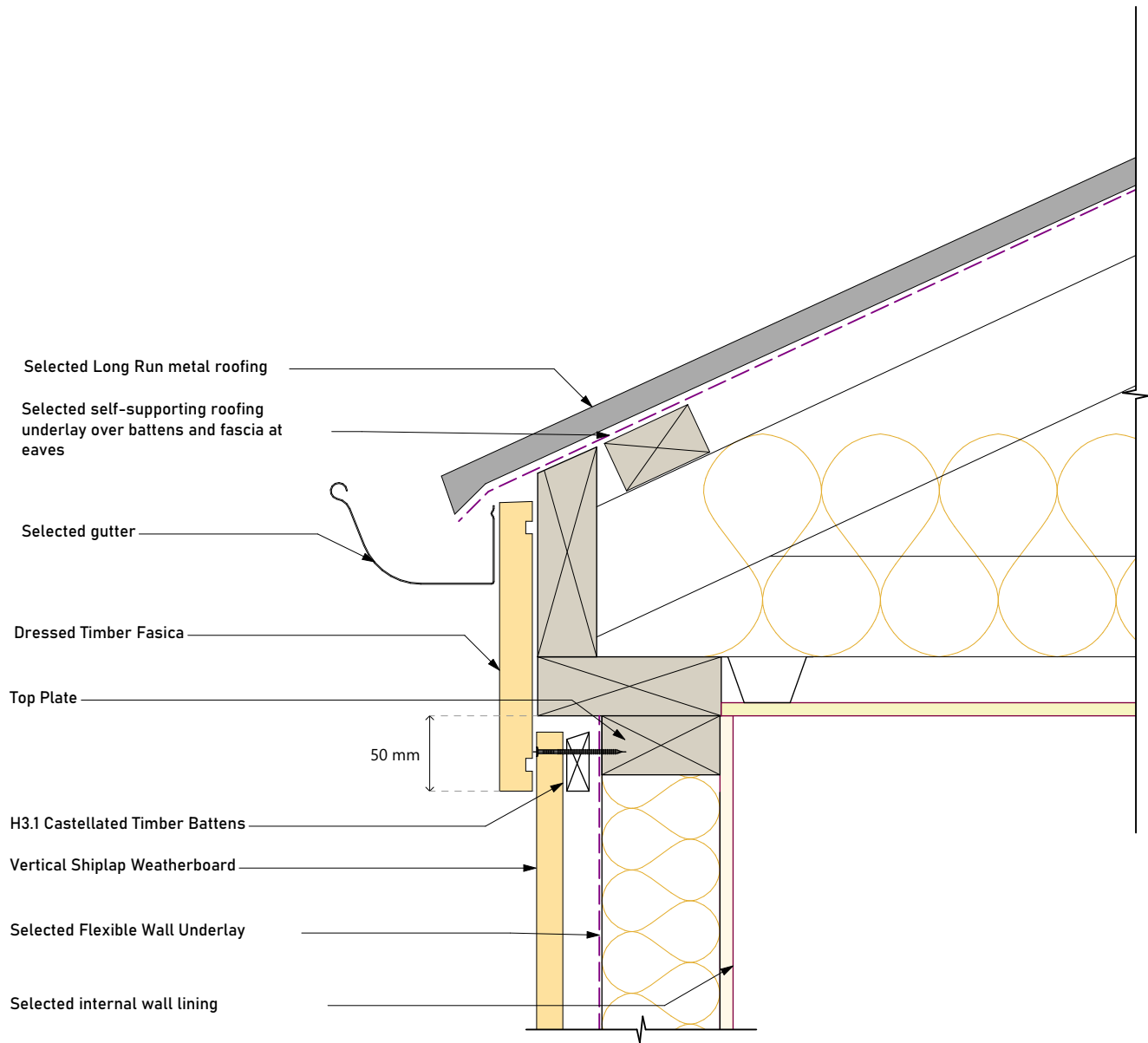




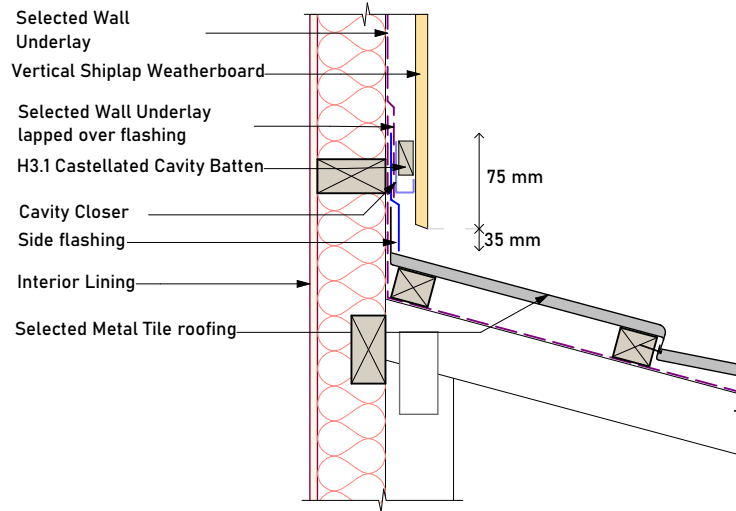
NOTES:

1. Flashing materials must be selected based on exposure zone, refer to NZS:3604 and table 20 NZBC E2/AS1.
2. Flashing tape must be compatible with the selected underlay.
3. Flexible underlay to comply with acceptable solution E2/AS1.
4. When Rigid air barriers are used flashing tape to be applied to the entire window opening.

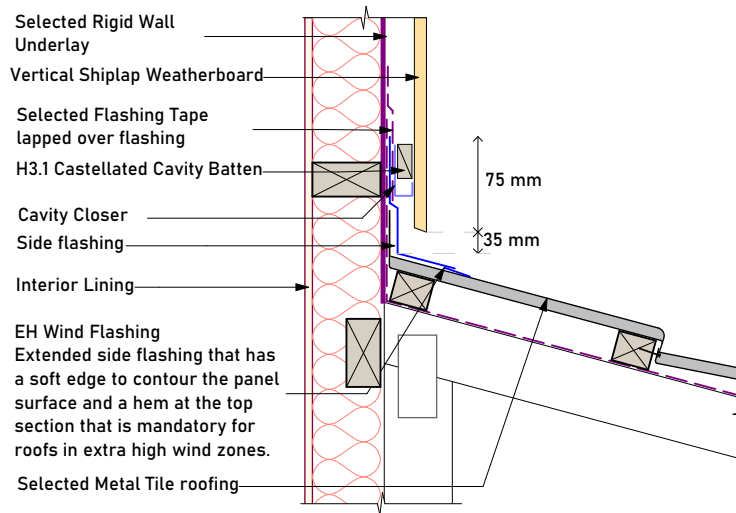




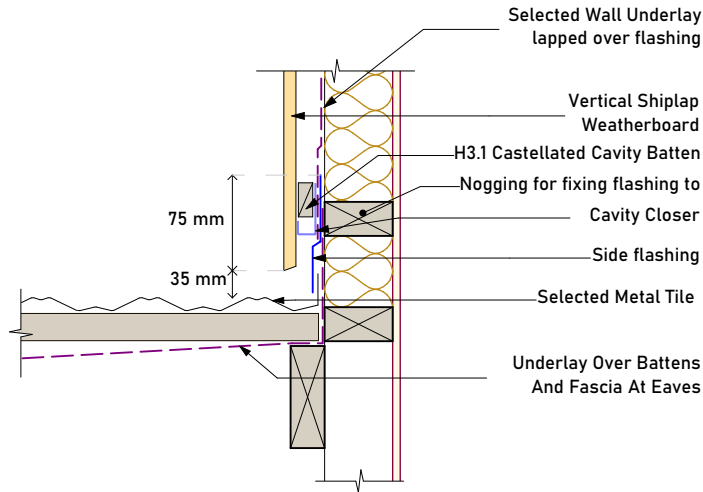
Wind Zones - Low to Very High



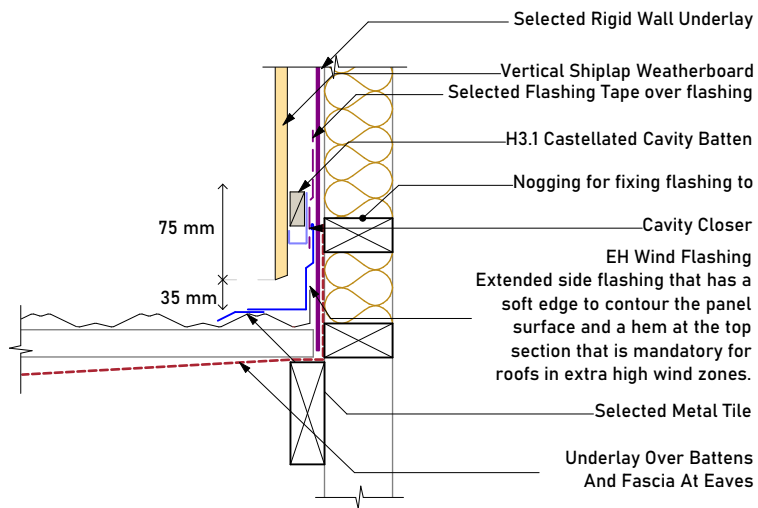
Wind Zones - Extra High

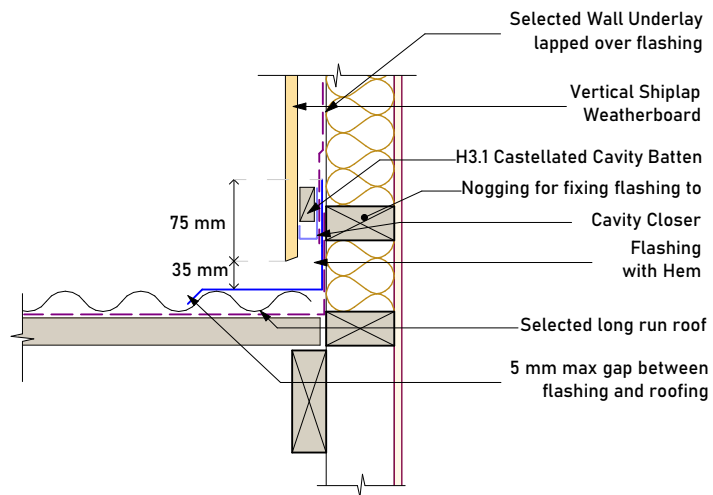
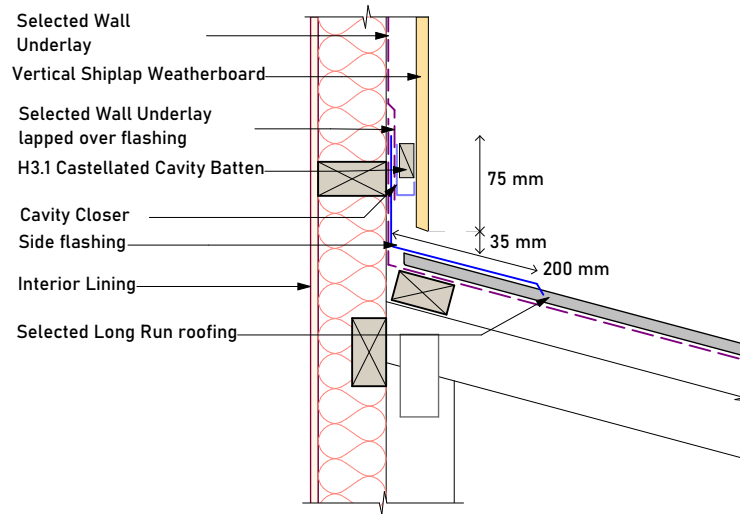


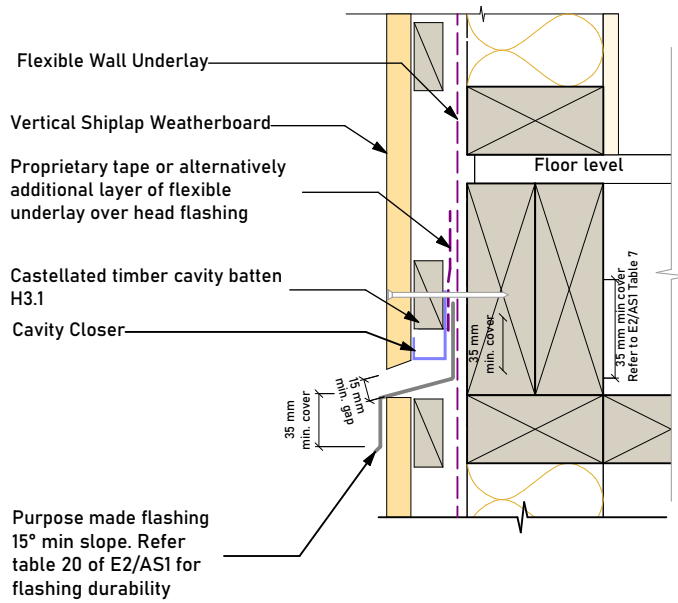
Wind Zones - Low to Very High

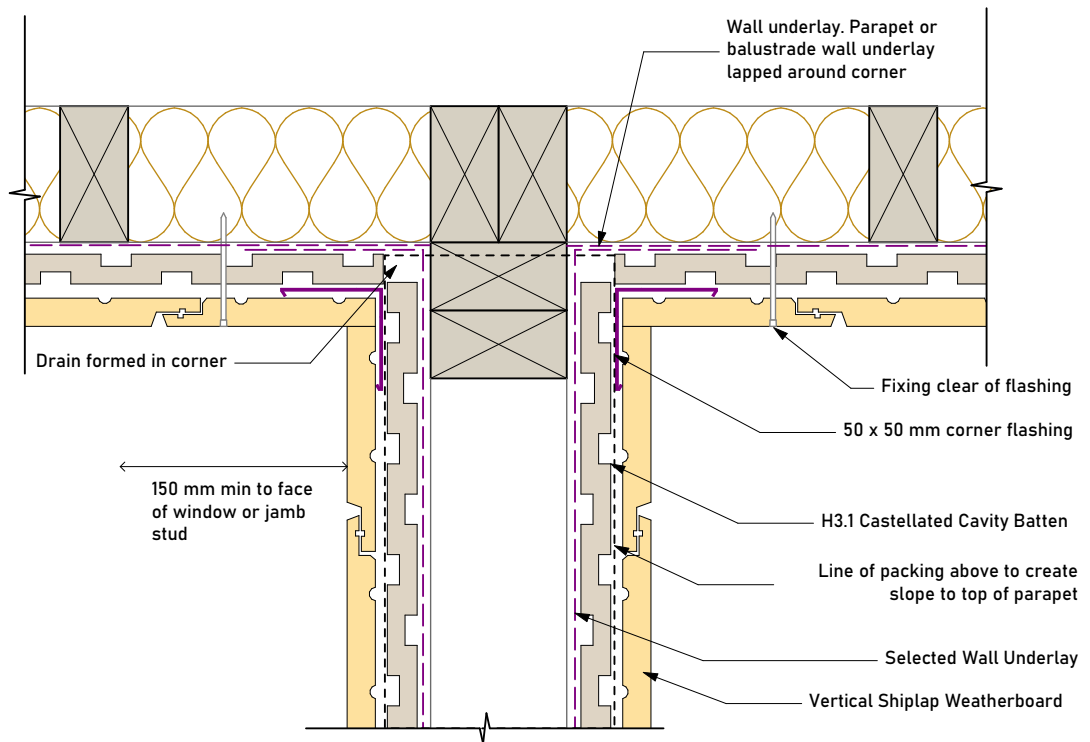
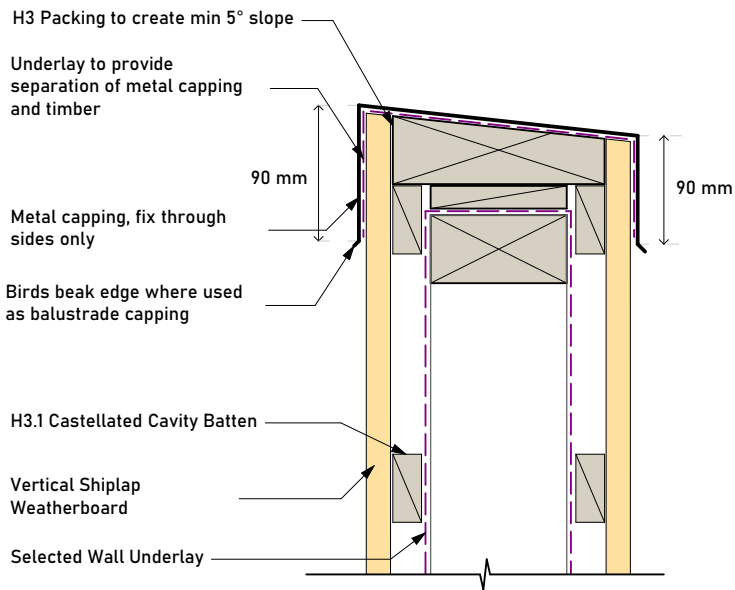


Wind Zones - Extra High

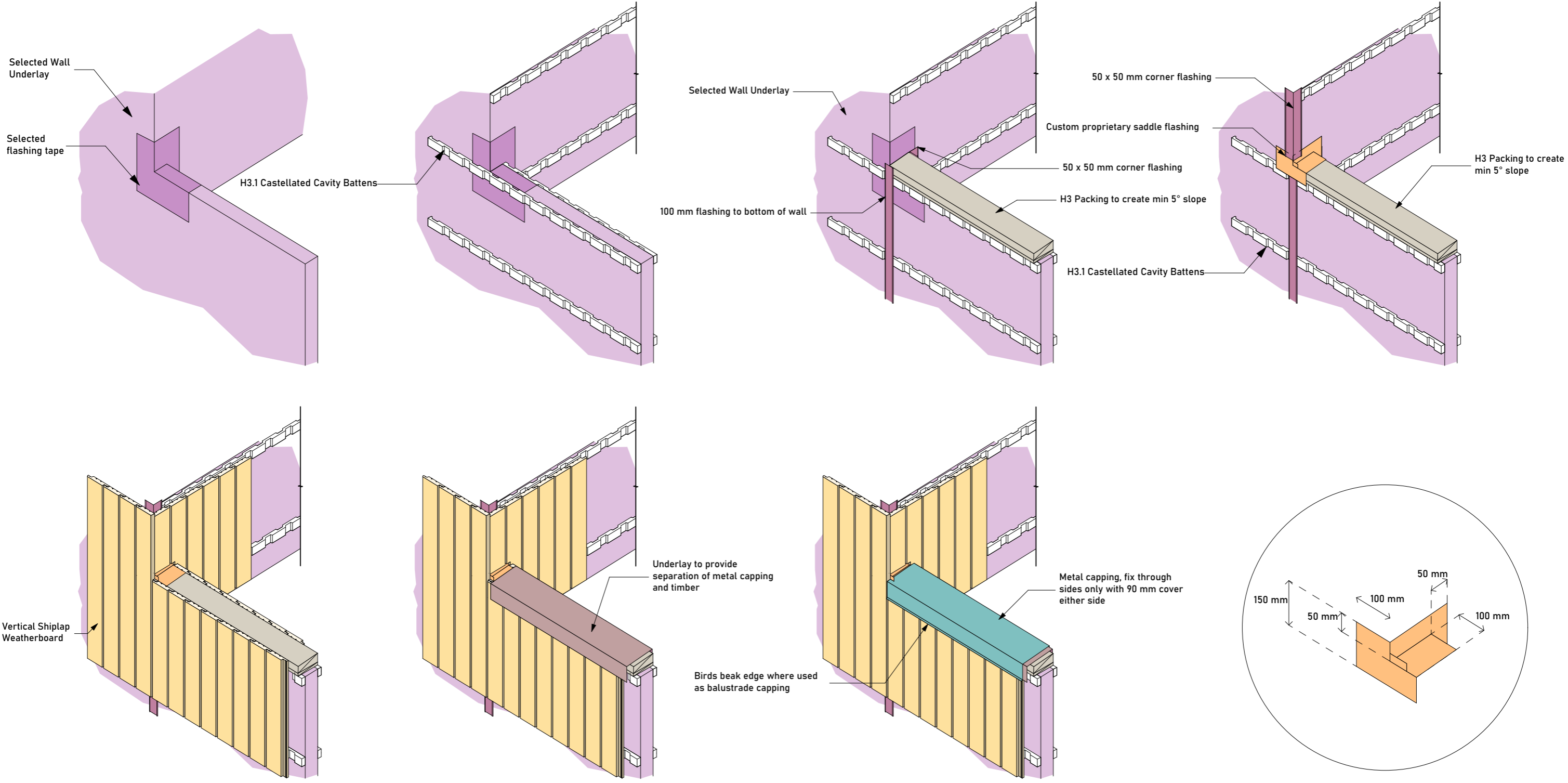




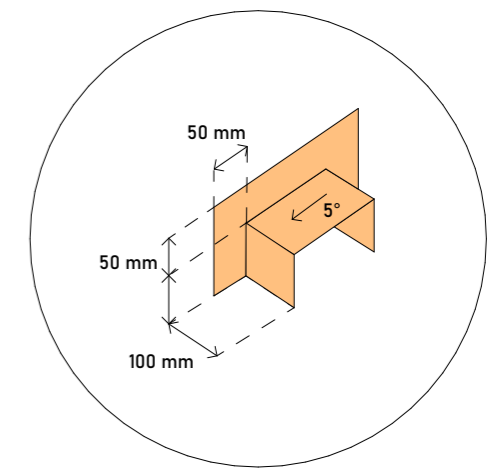
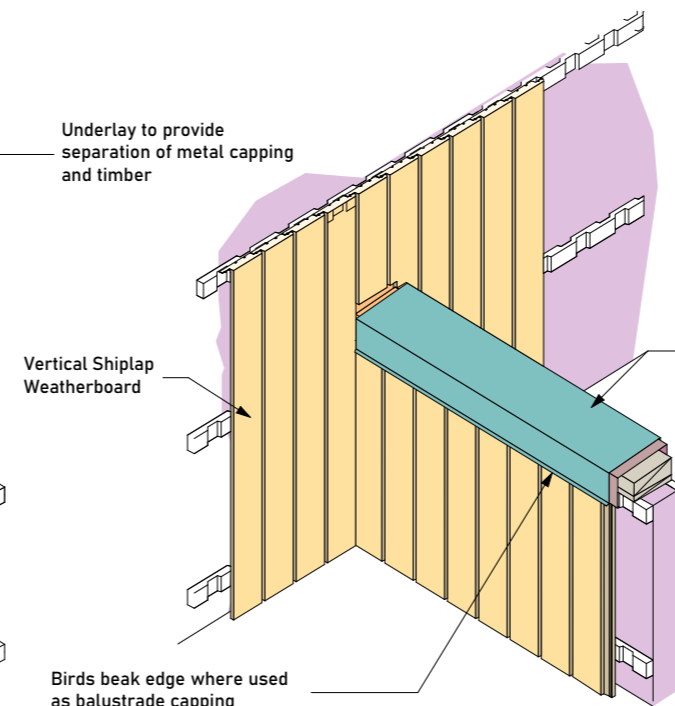
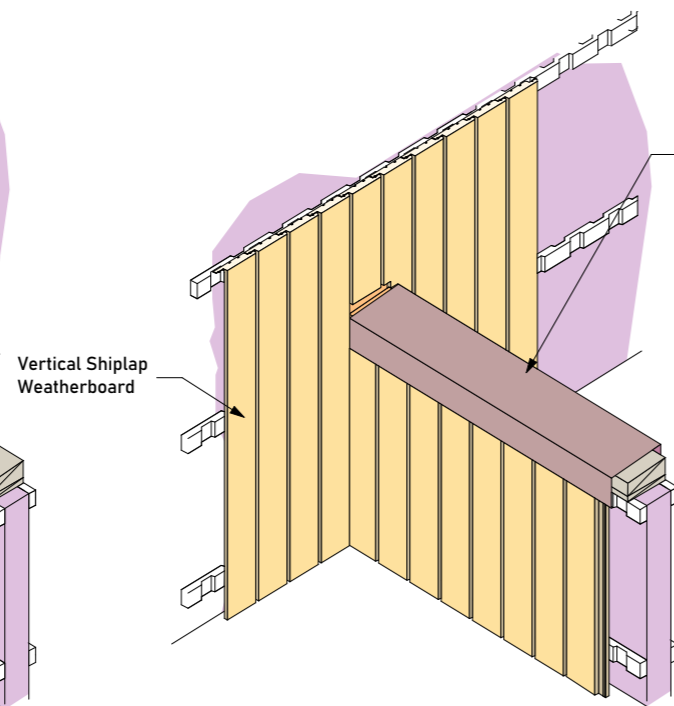
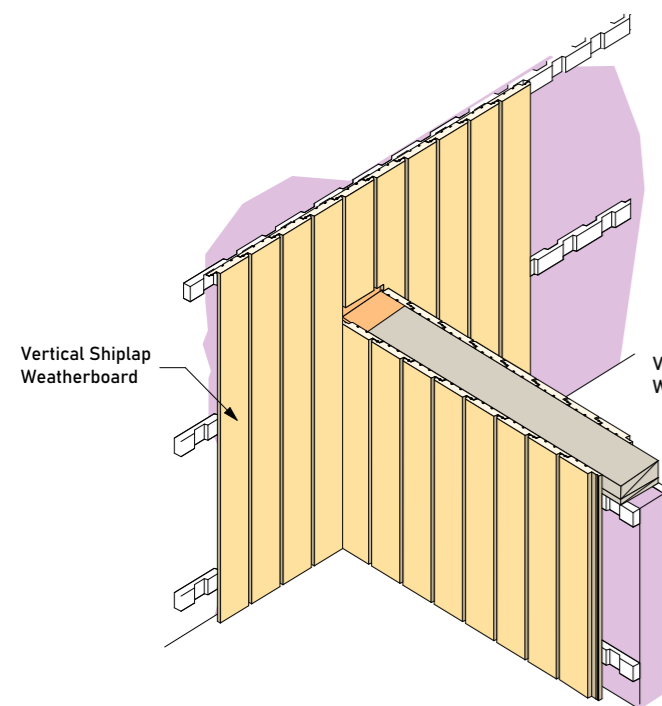
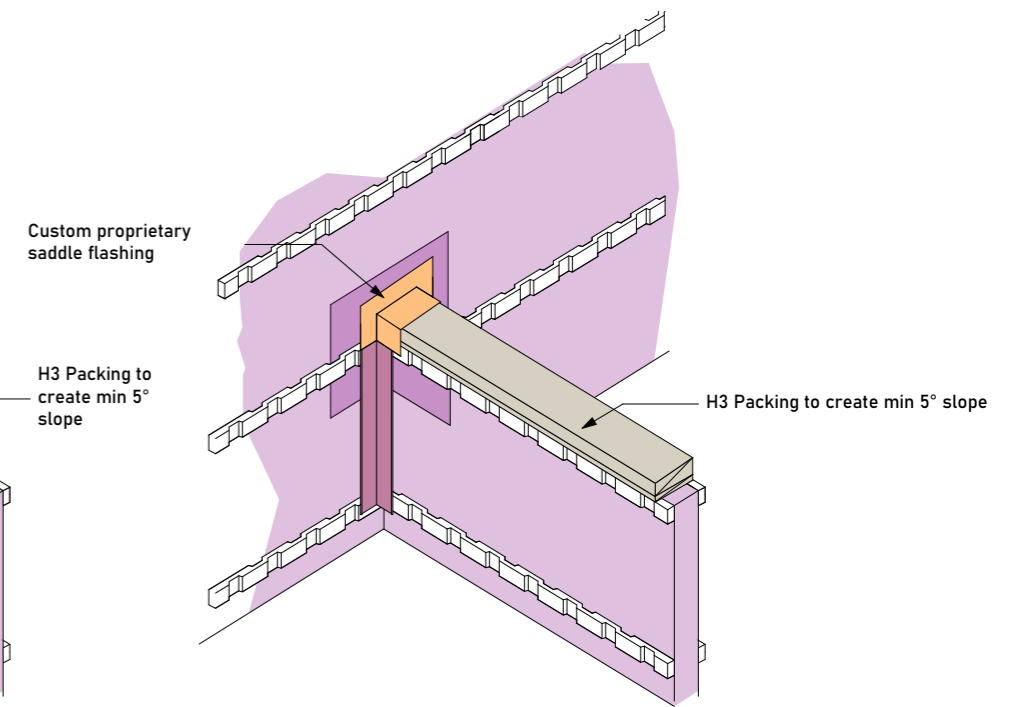
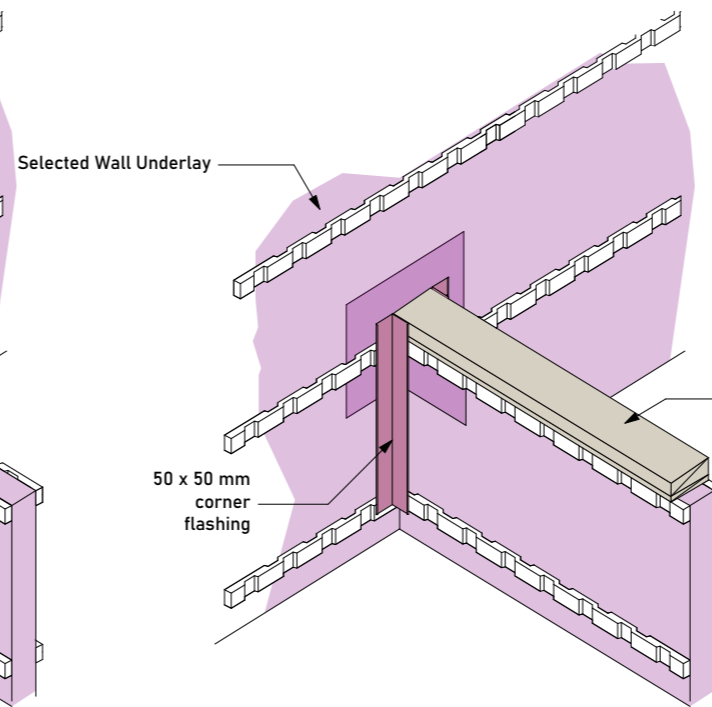
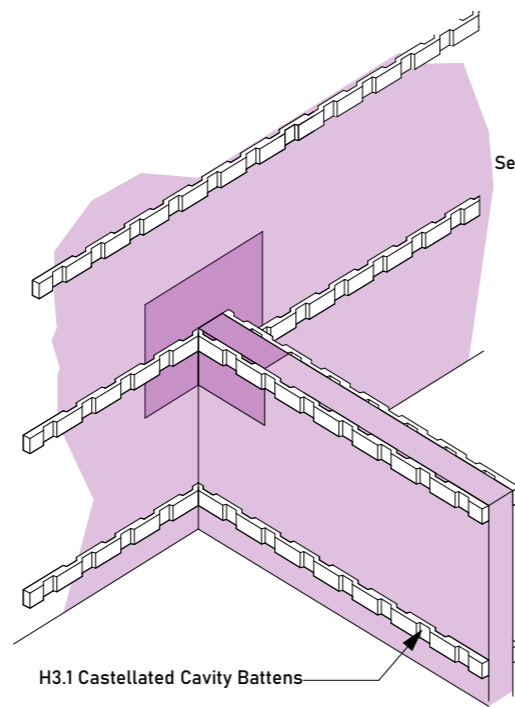
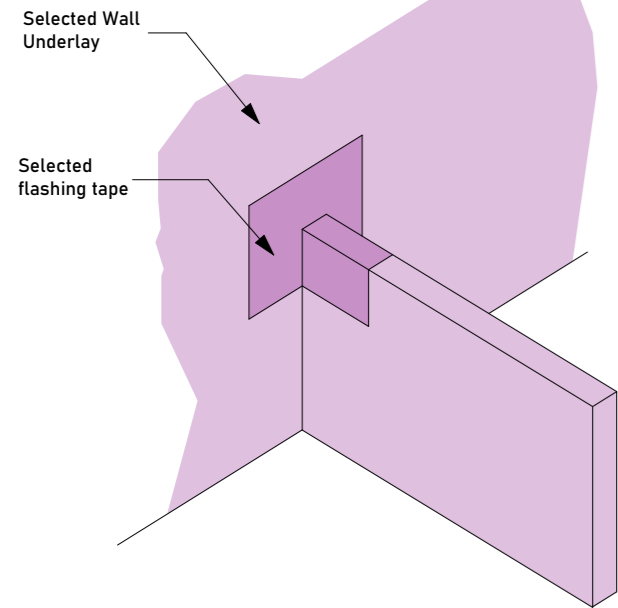




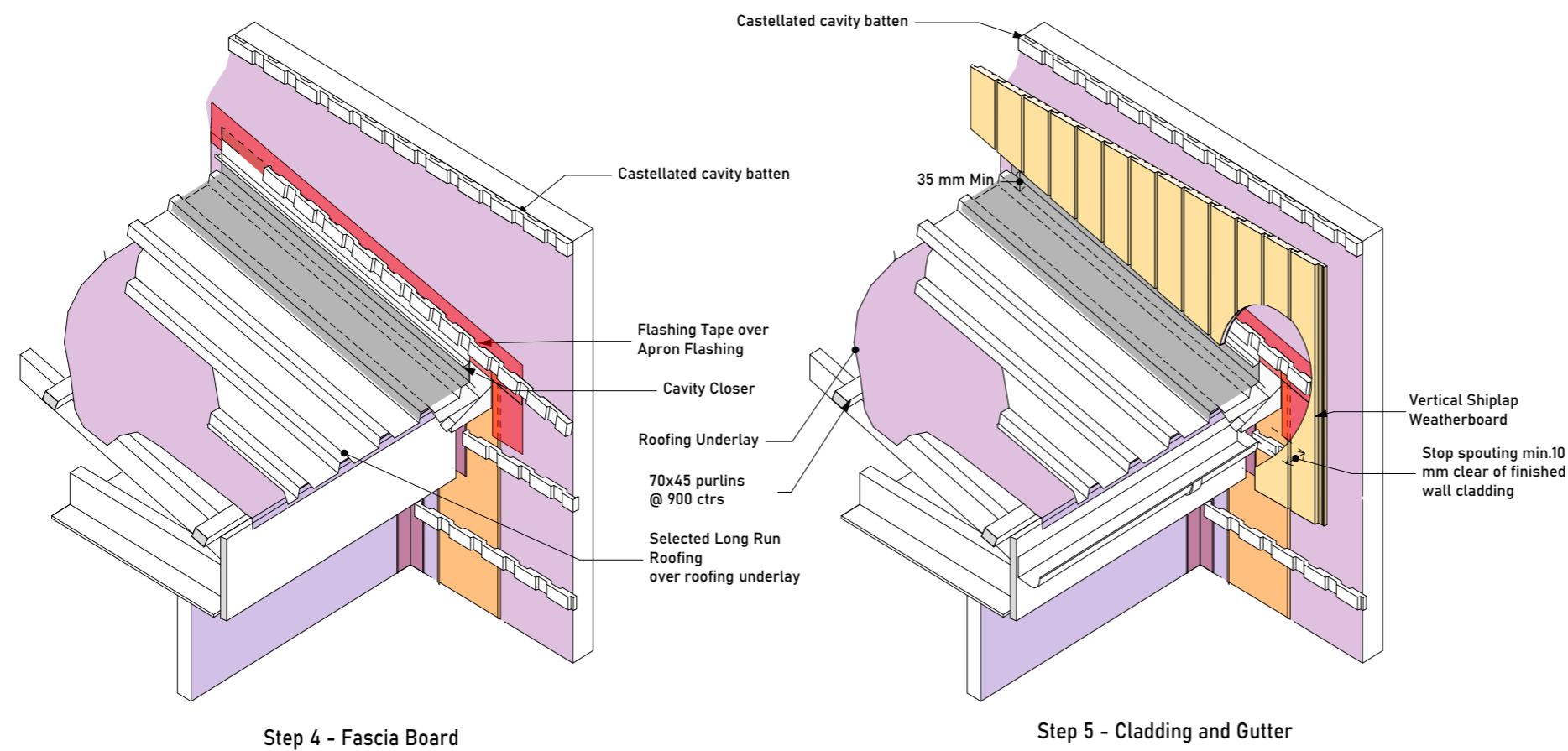
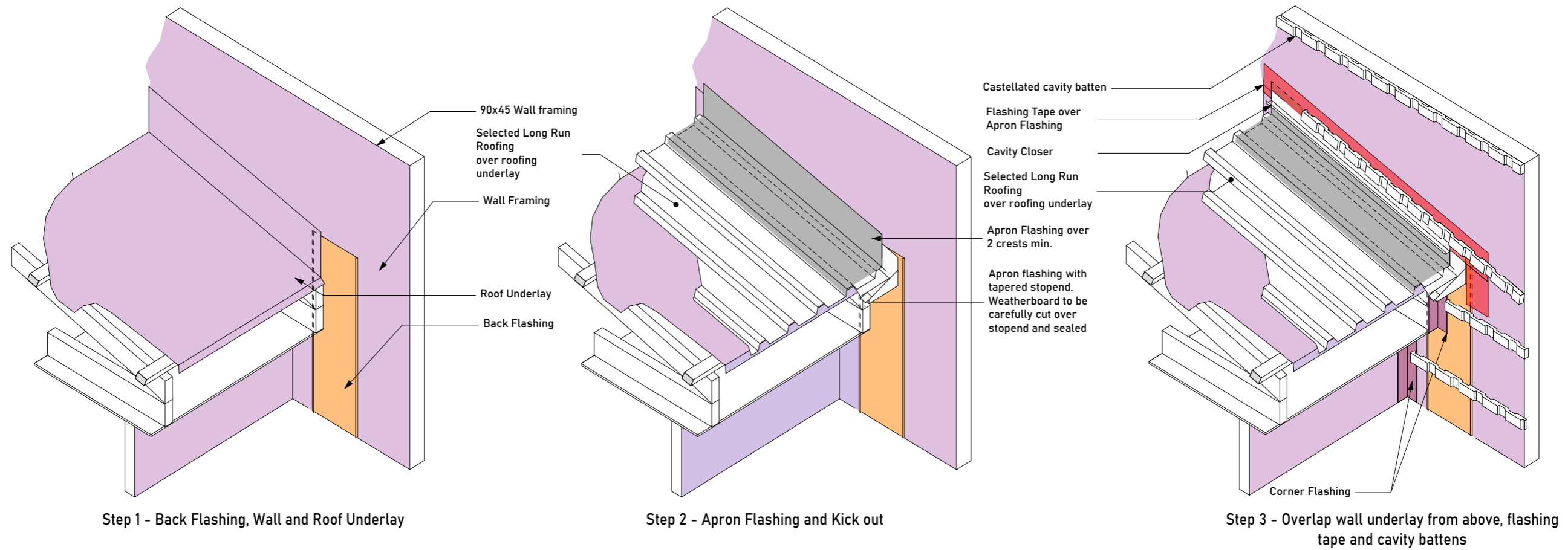
Note: Claddings to be installed over drained cavity as per requirement E2 AS1 6.0

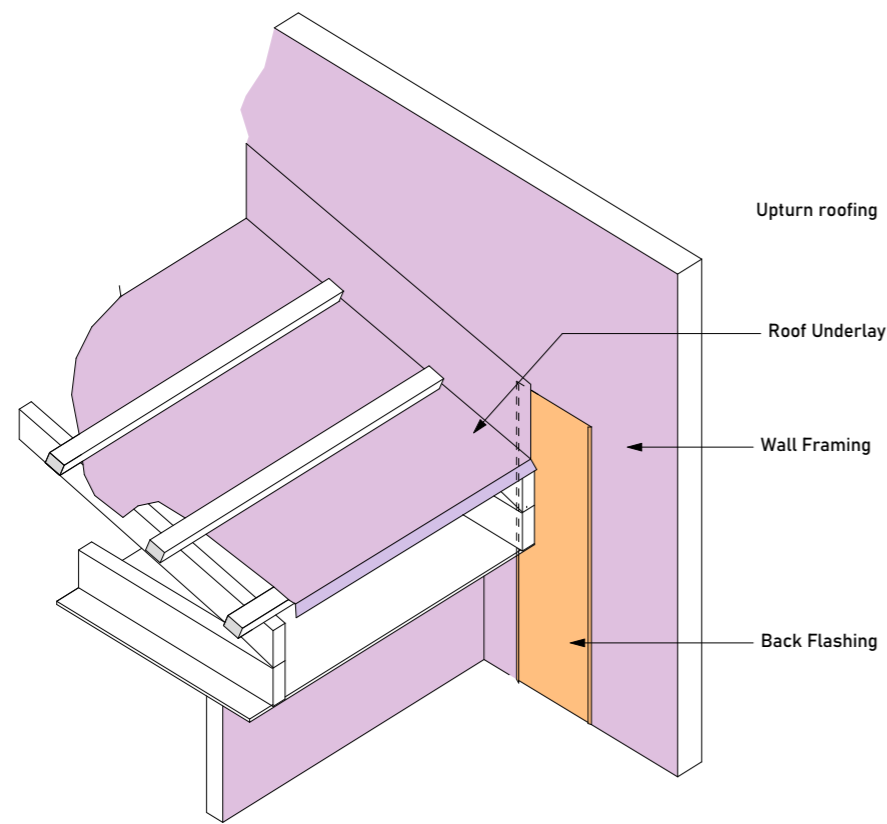


Note: Claddings to be installed over drained cavity as per requirement E2 AS1 6.0

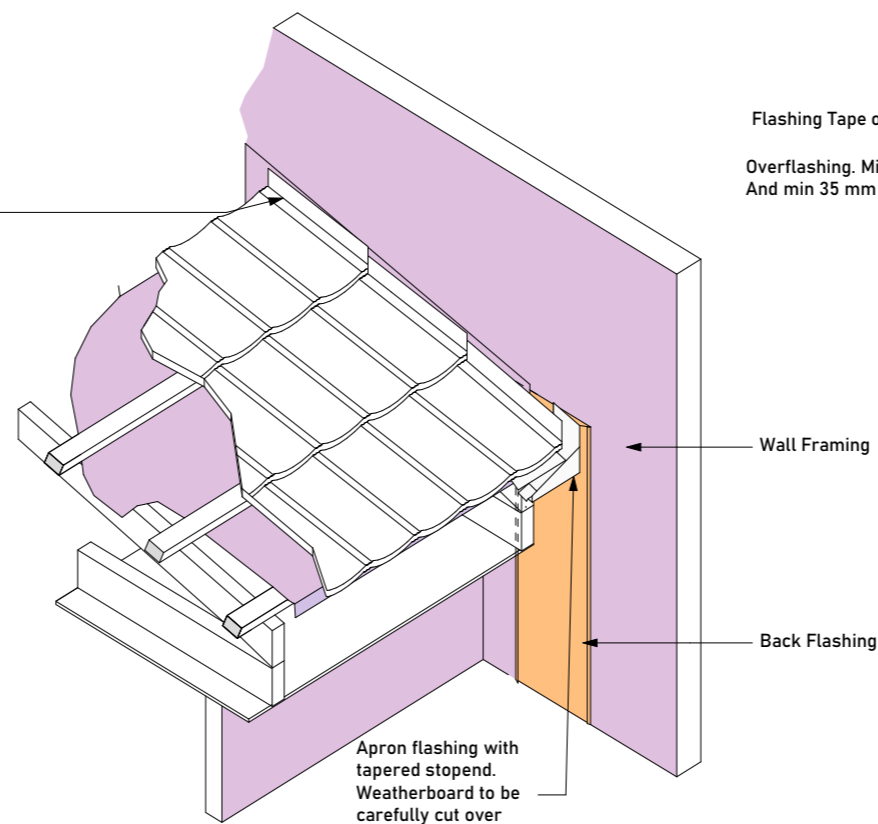


Note: Claddings to be installed over drained cavity as per requirement E2 AS1 6.0

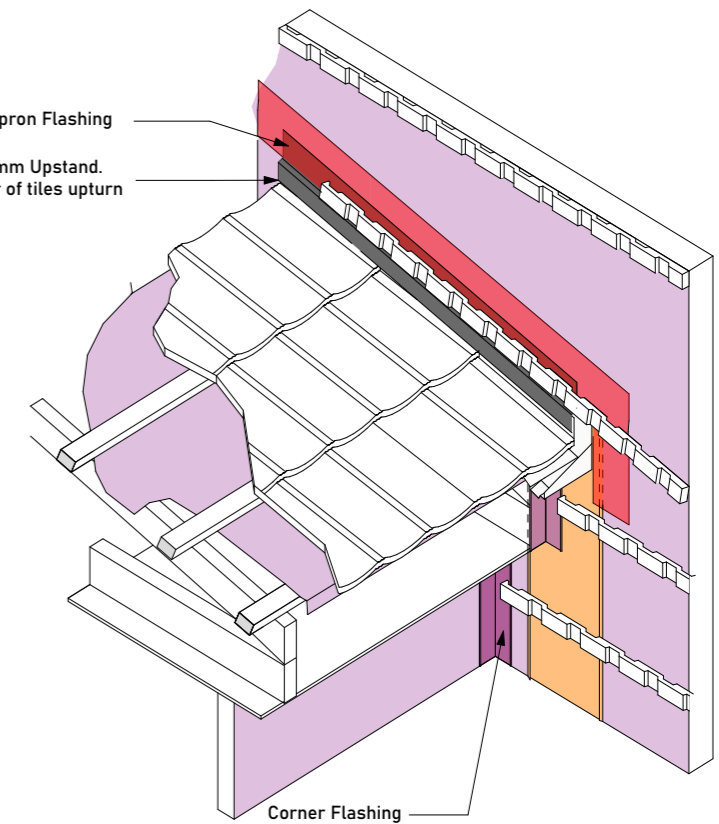




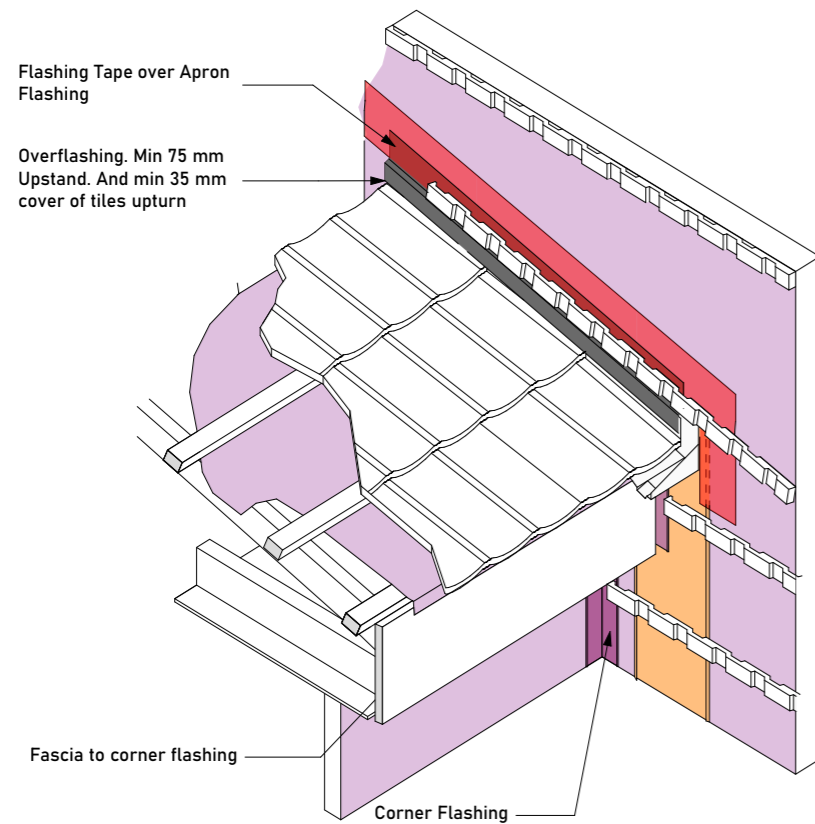
Step 1 - Back Flashing, Wall and Roof Underlay



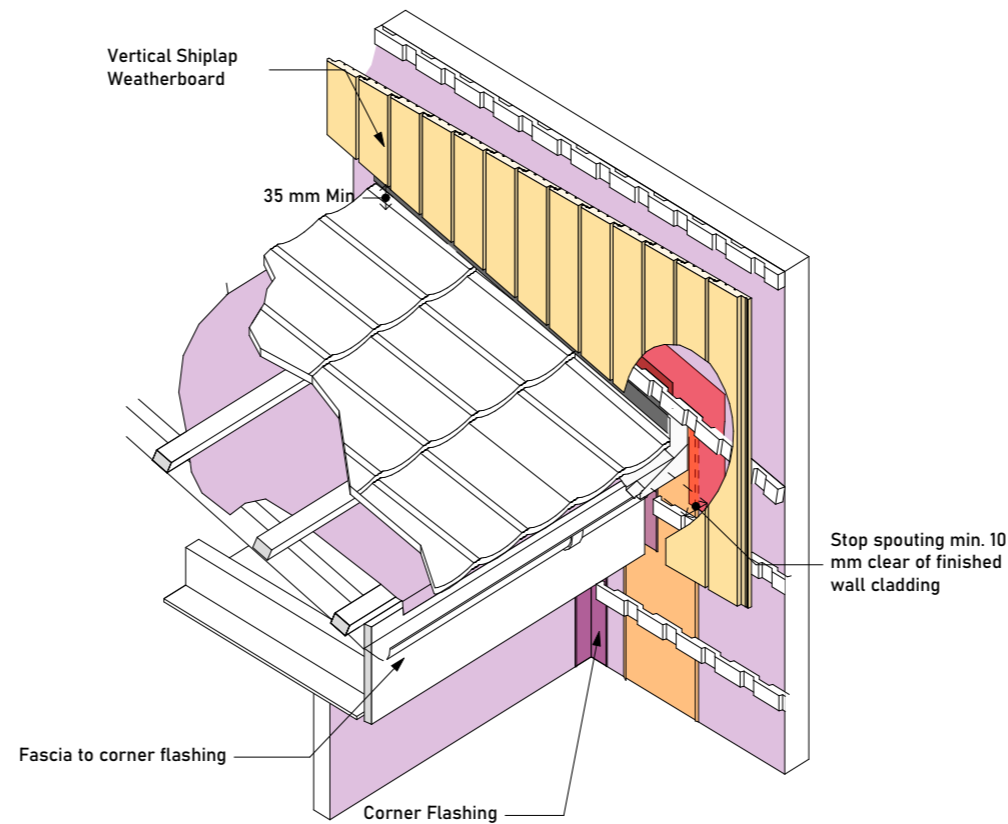
Step 2 - Apron Flashing and Kick out



Step 3 - Overlap wall underlay from above, flashing tape and cavity battens

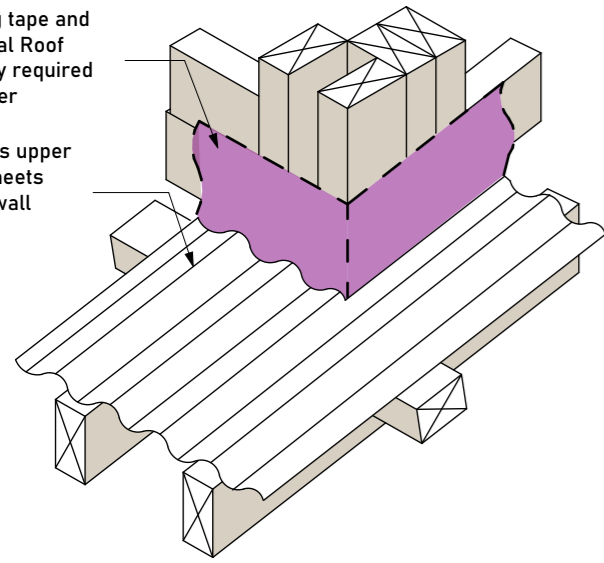


Step 4 - Cavity Closer

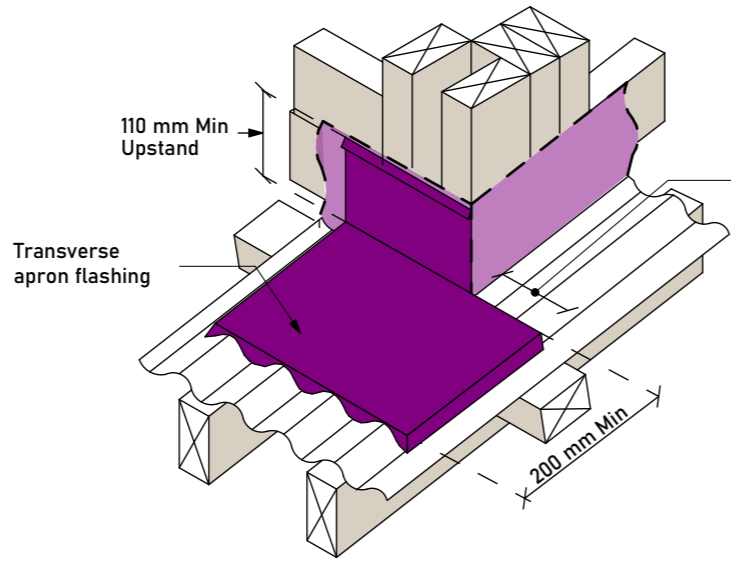


Step 4 - Cavity Closer

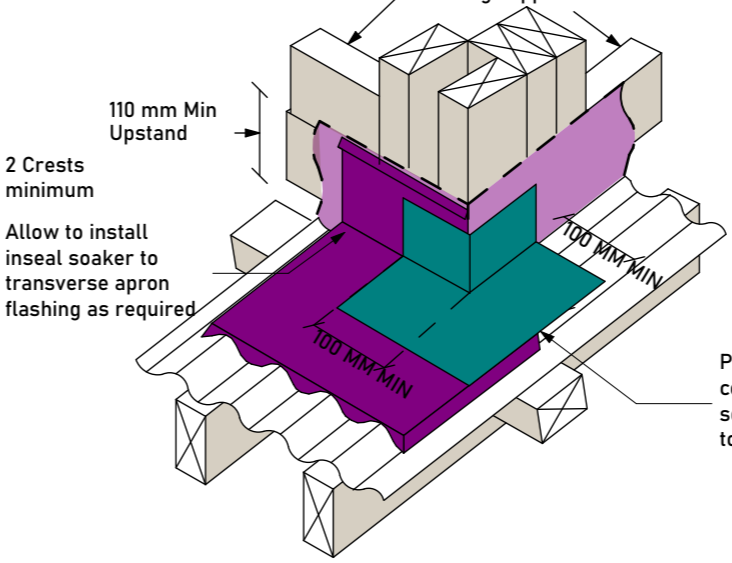
Flashing tape and additional Roof Underlay required for corner
 Stop ends upper end of sheets abutting wall framing



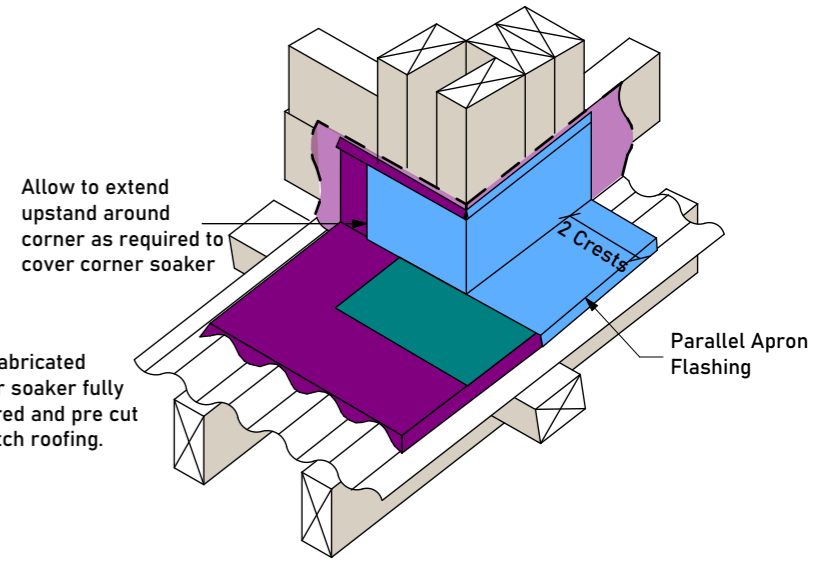
Step 1 - Roofing and Wall Underlay



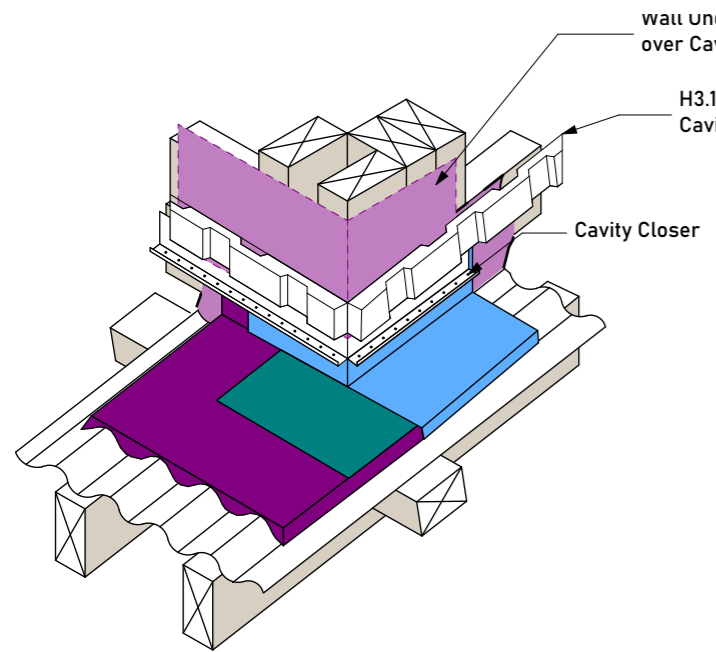
Step 2 - Transverse flashing



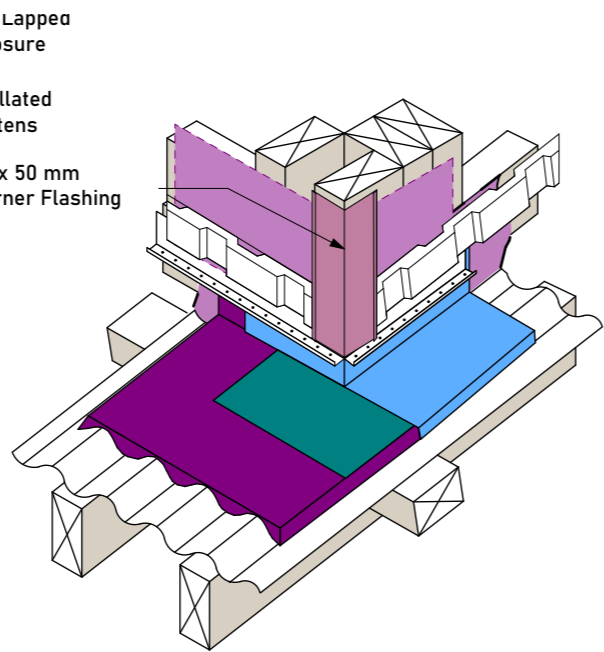
Step 3 - Corner Soaker



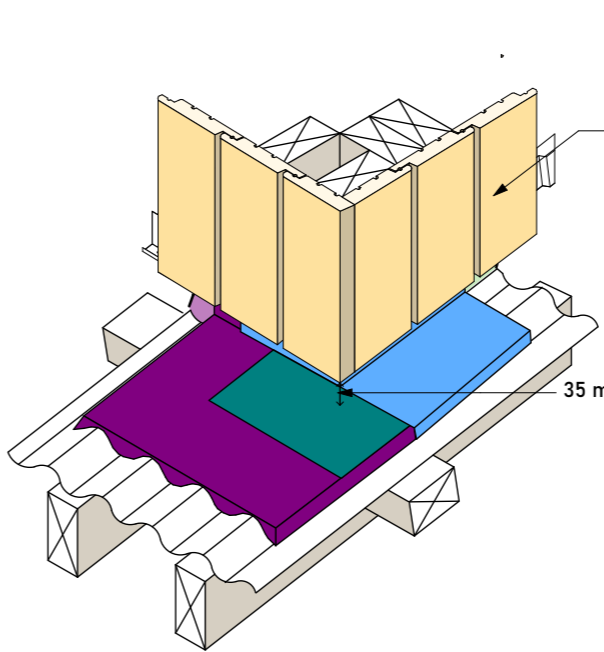
Step 4 - Parallel Apron Flashing



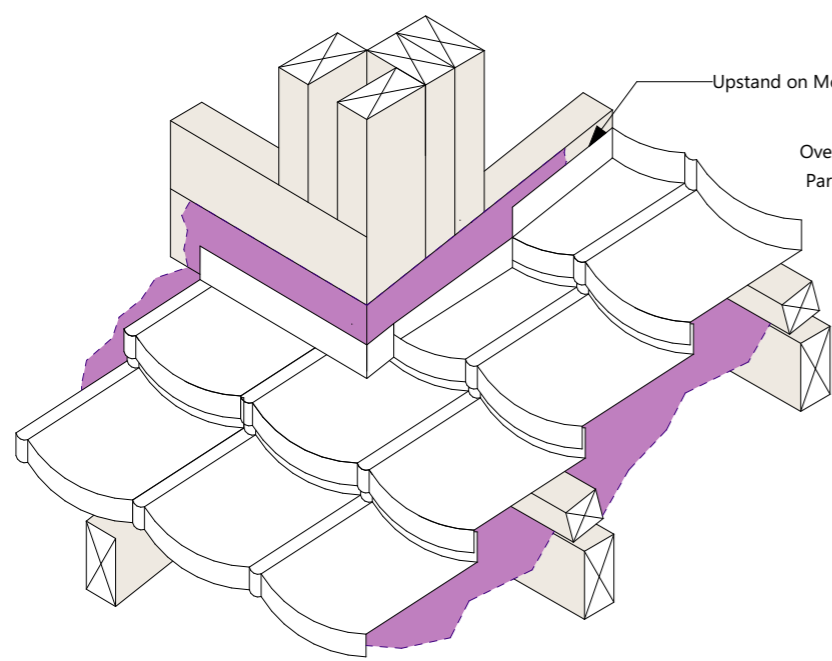
Step 5 - Cavity Battens and Cavity Closer



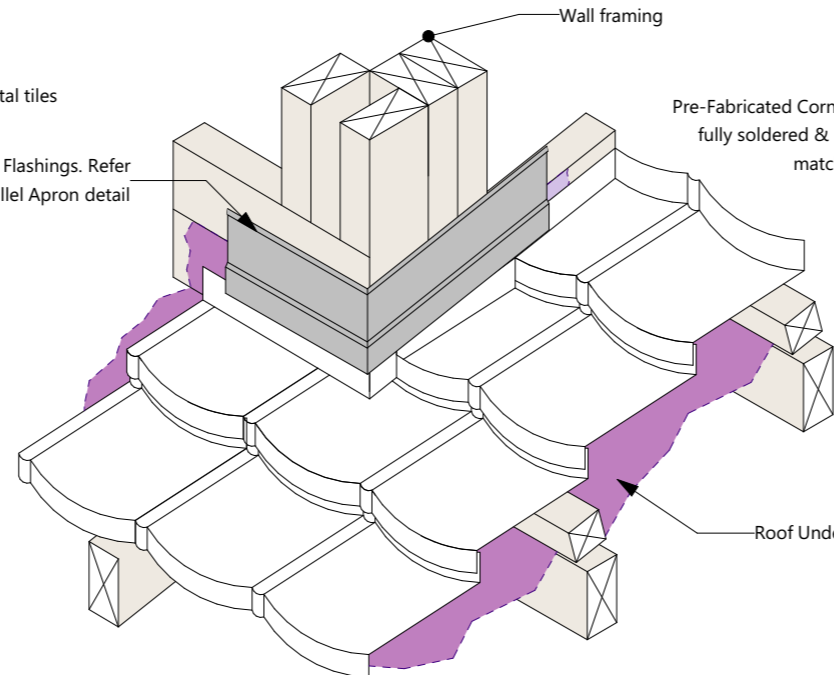
Step 6 - External Corner Flashing



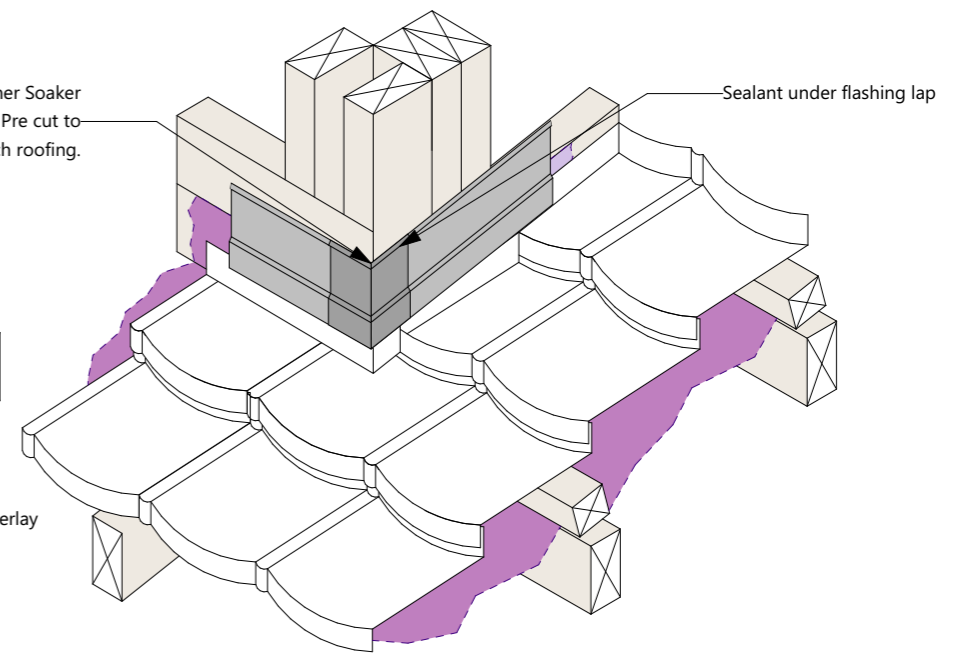
Step 7 - Cladding



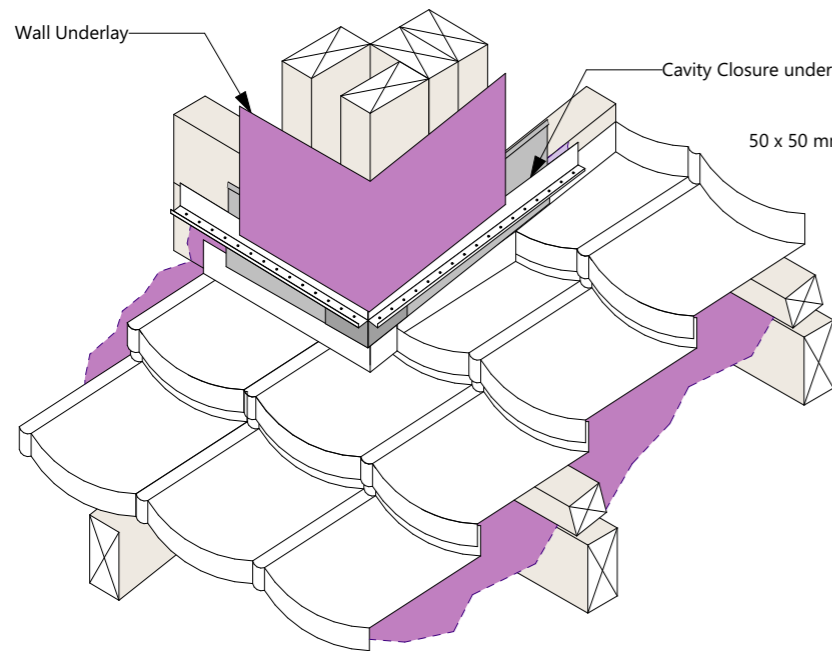
Step 1 - Roofing



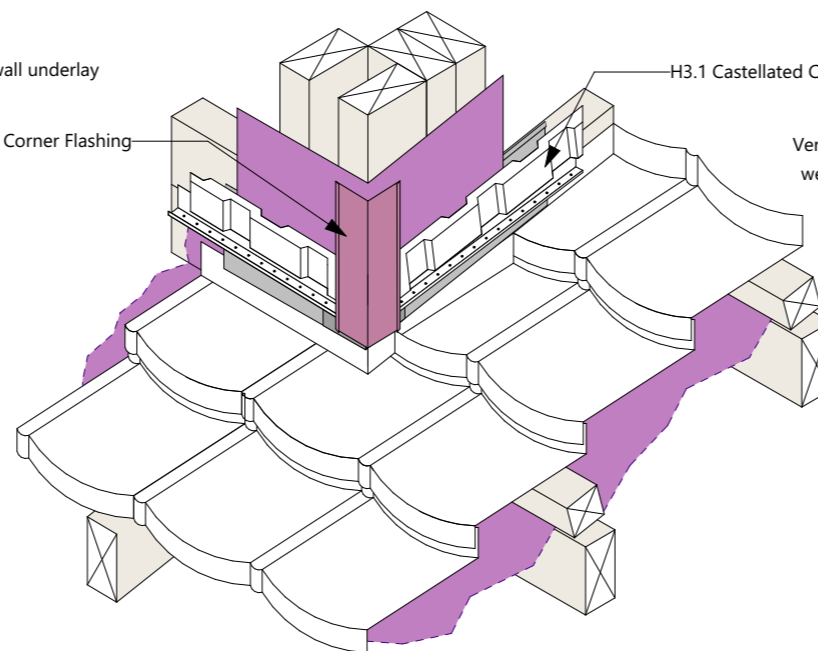
Step 2 - Over Flashings



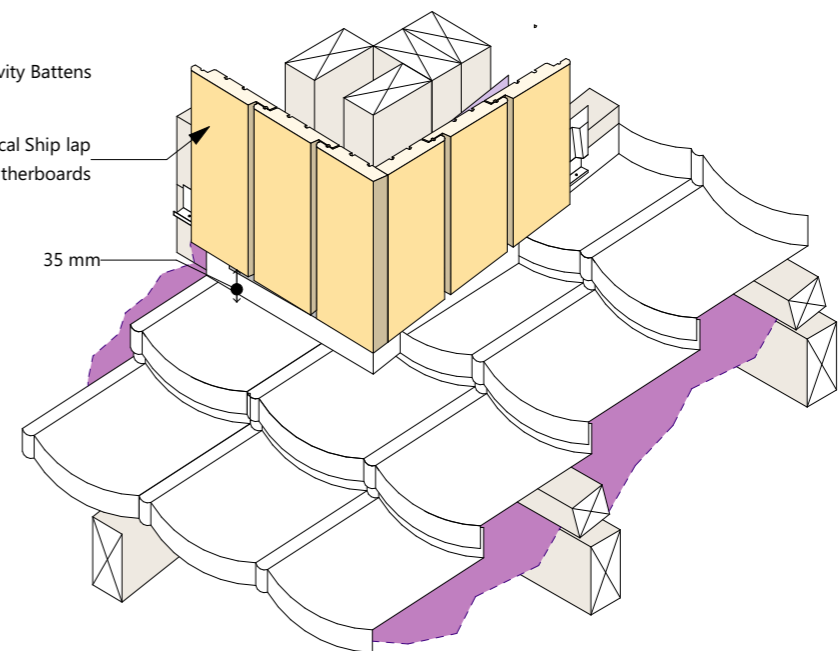
Step 3 - Corner Soaker



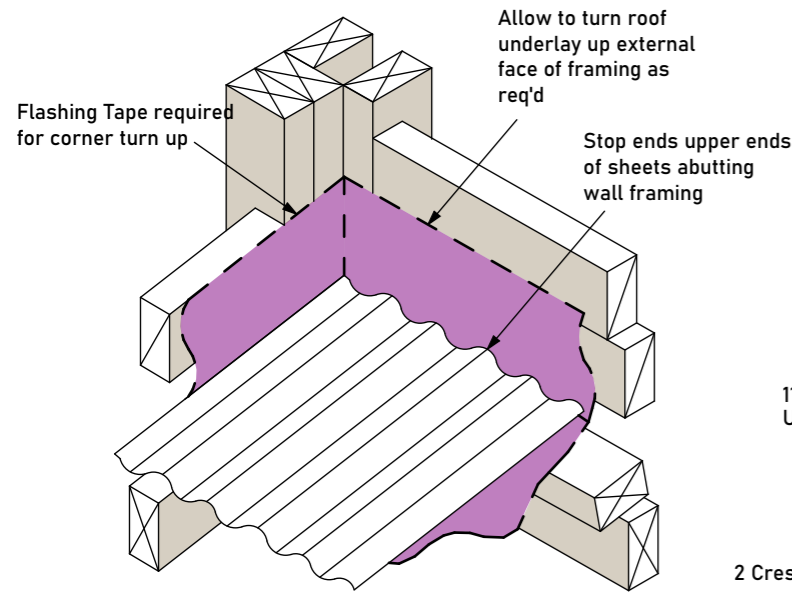
Step 4 - Cavity Closure and Wall Underlay



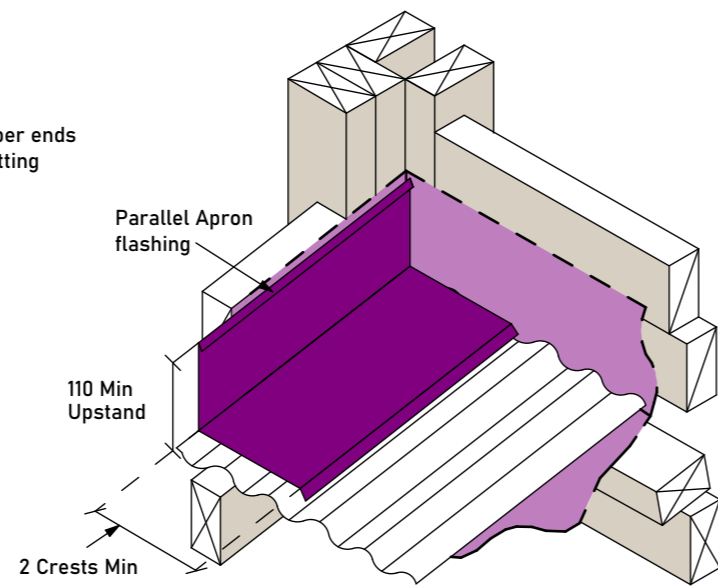
Step 5 - Cavity Battens



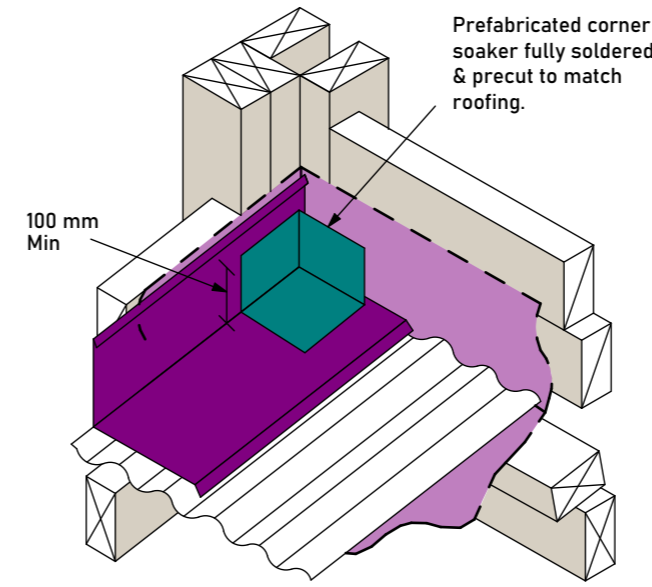
Step 6 - Cladding



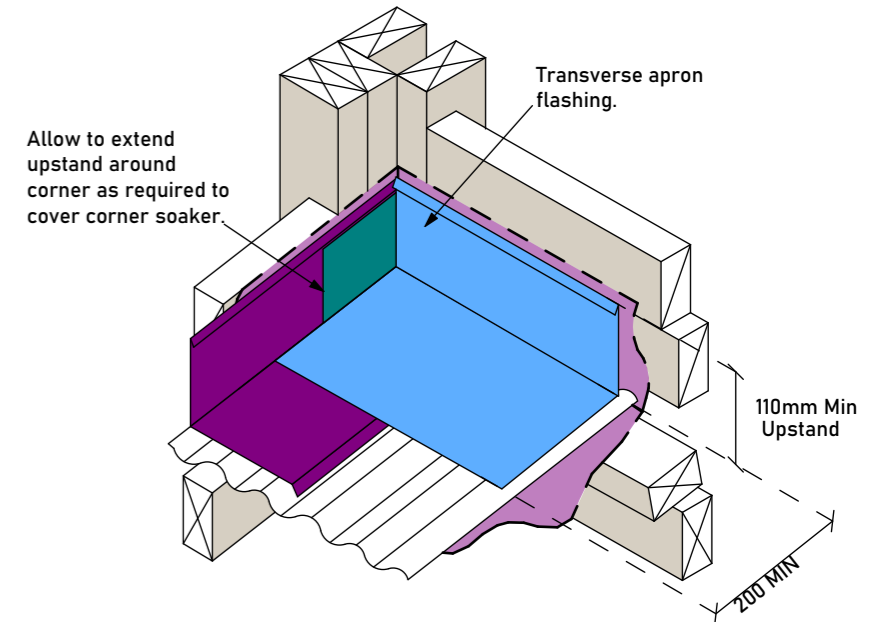
Step 1 - Roofing and Underlay



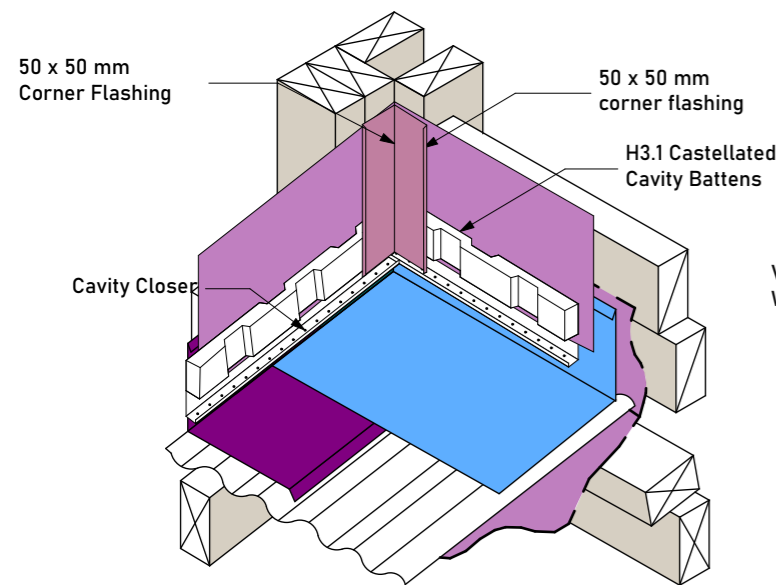
Step 2 - Transverse Flashing



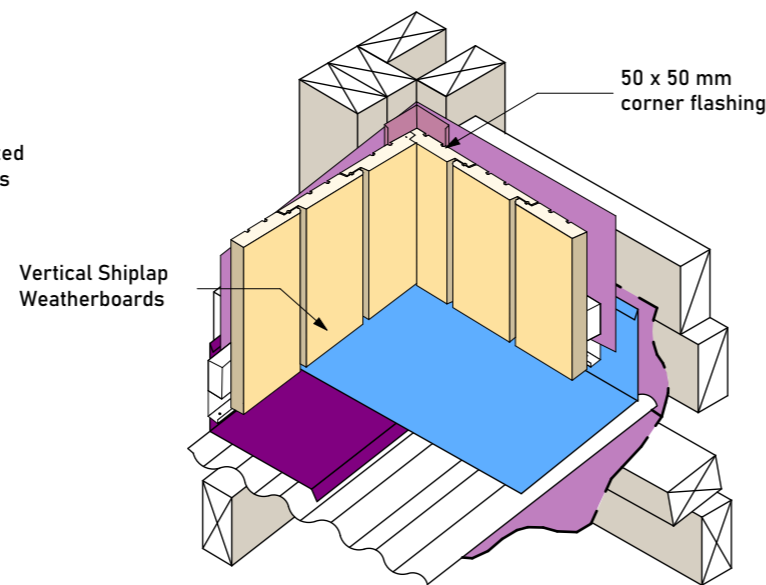
Step 3 - Transverse Apron Flashing



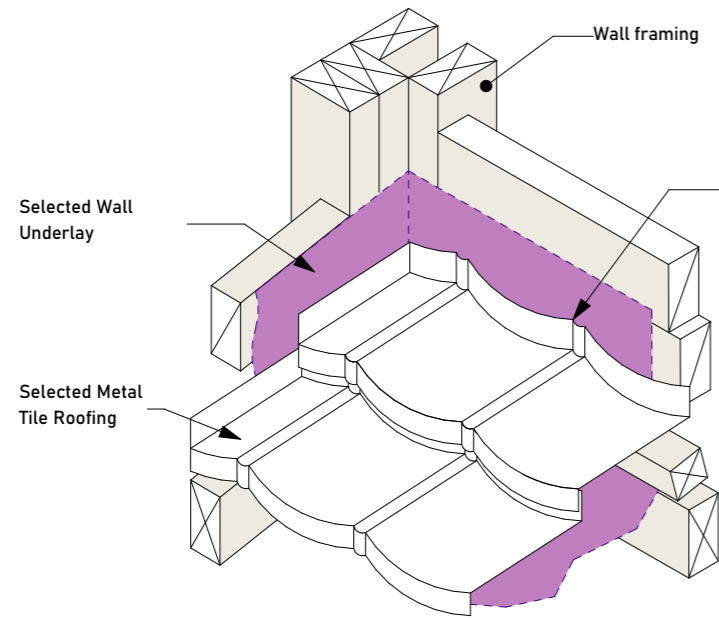
Step 4 - Parallel Apron Flashing



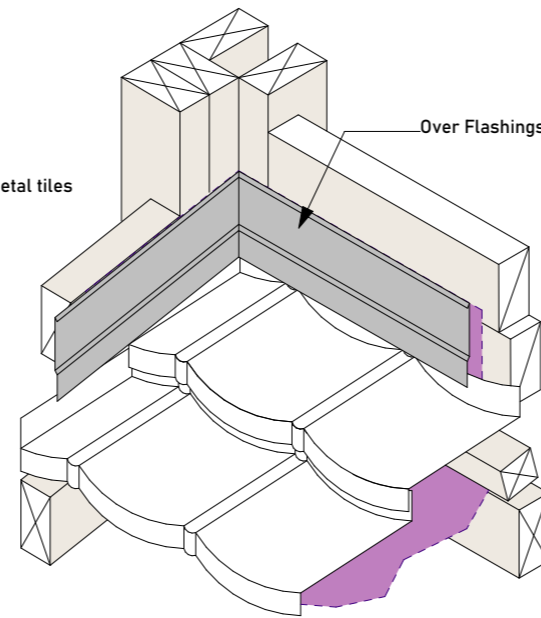
Step 5 - Cavity Closer, Cavity Battens and Corner Flashing



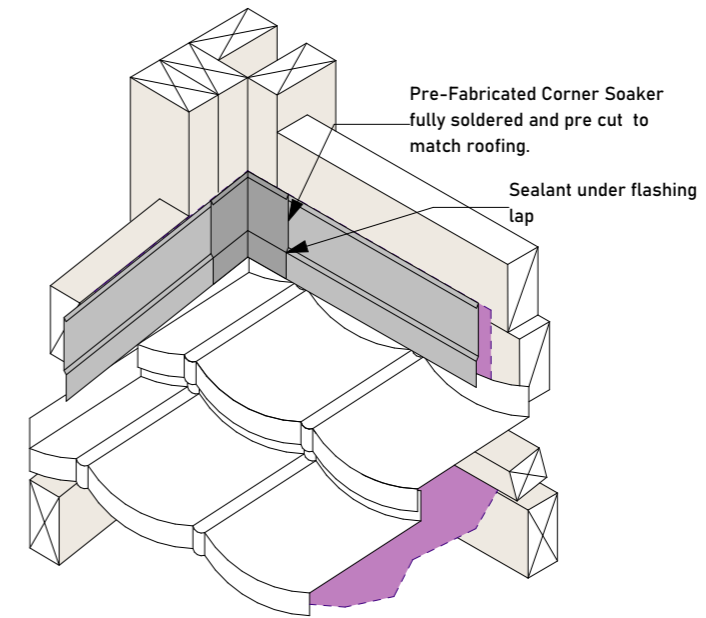
Step 6 - Cladding



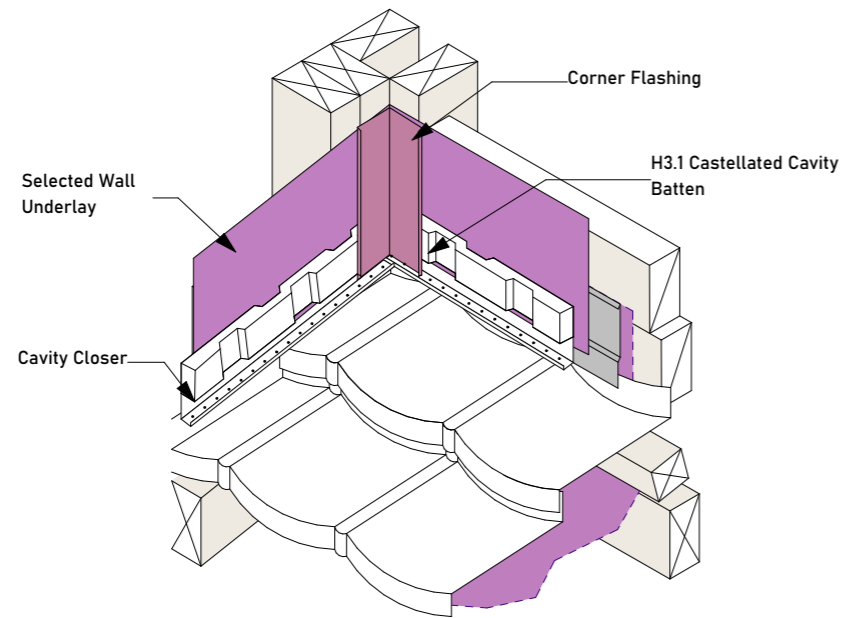
Step 1 - Roofing



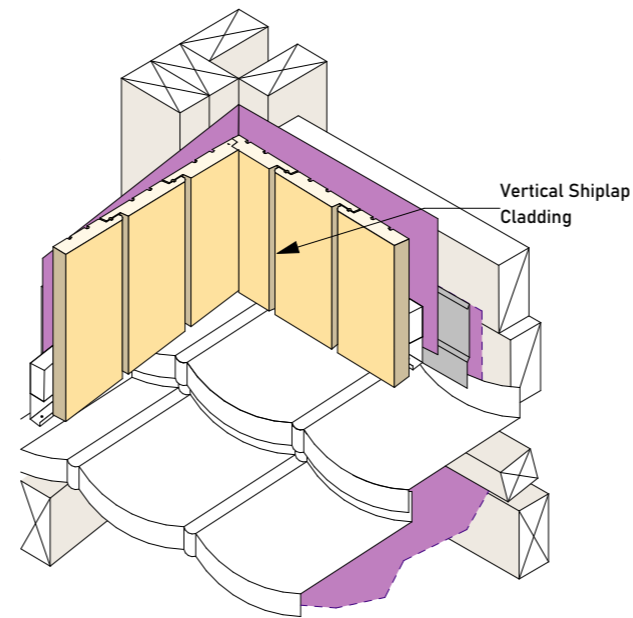
Step 2 - Over Flashings



Step 3 - Corner Soaker



Step 4 - Cavity Battens, Closure and Corner Flashing



Step 5 Cladding

